

Morphometric Interpretation of Postganglionic Sympathetic Neurons that Innervate Myocardium

Sachin Sharma^{1,2*}, Vivek Kumar³

¹*UCLA Neurocardiology Centre for Excellence, University of California Los Angeles, USA;* ²*Department of Biosciences, Graphic Era University, Dehradun, India;* ³*Department of Neuroscience, Michigan Institute of Neuroscience, University of Michigan, Ann Arbor, USA*

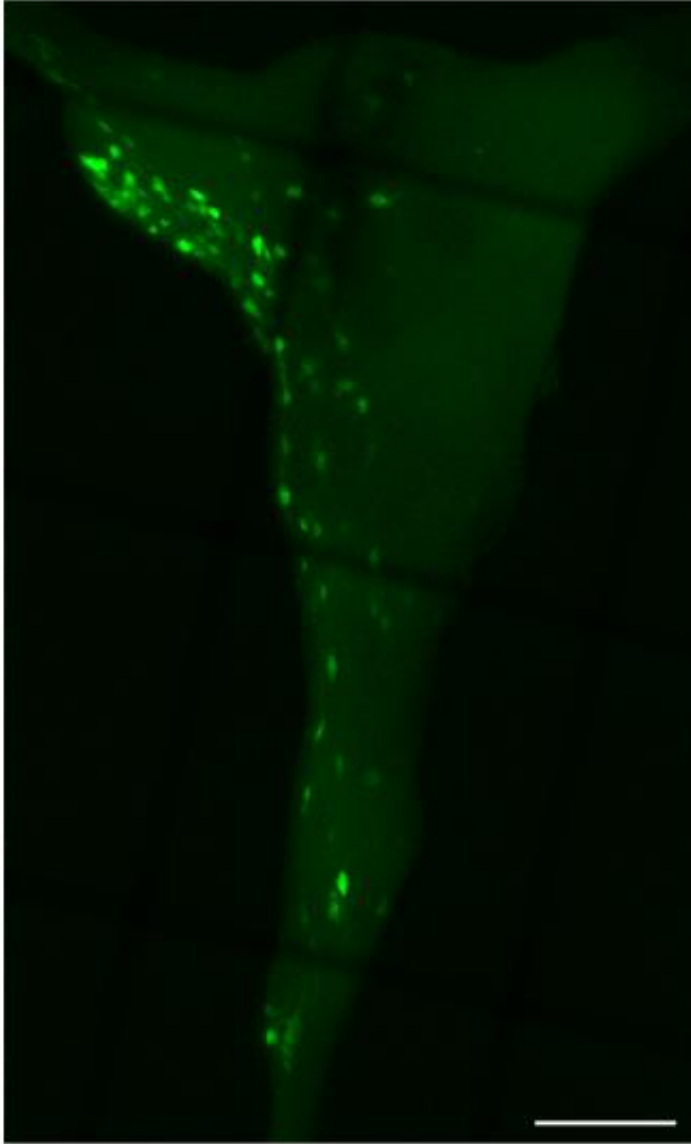
Correspondence to: Sachin Sharma, Department of Biosciences, Graphic Era University, Dehradun, India, Email: sachinhcu07@gmail.com

Received: 06-Aug-2025, Manuscript No. JVMS-25-29473; **Editor assigned:** 08-Aug-2025, PreQC No. JVMS-25-29473 (PQ); **Reviewed:** 22-Aug-2025, QC No. JVMS-25-29473; **Revised:** 29-Aug-2025, Manuscript No. JVMS-25-29473 (R); **Published:** 05-Sep-2025, DOI: 10.350310/2329-6925.25.13.596

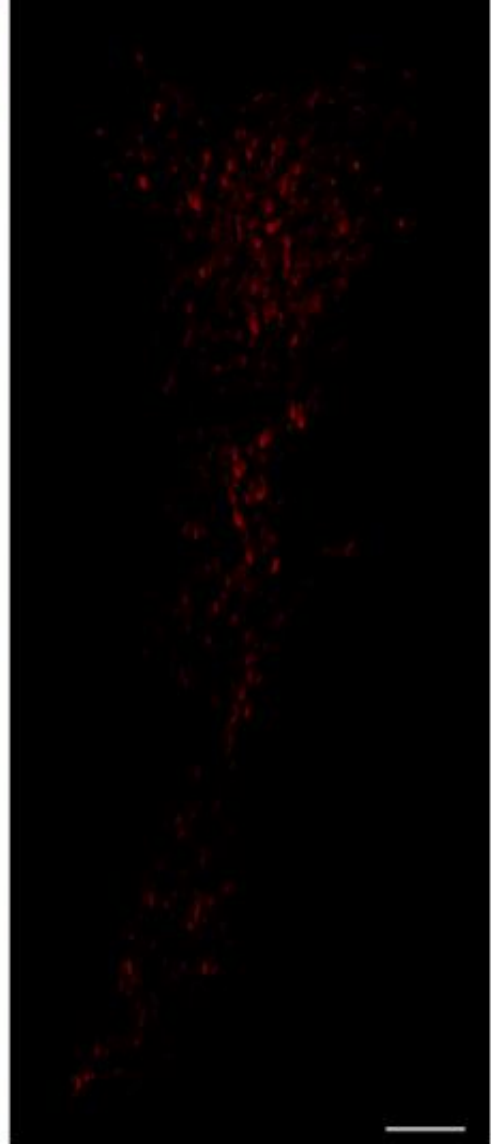
Citation: Sharma S, Kumar V (2025). Morphometric Interpretation of Postganglionic Sympathetic Neurons that Innervate Myocardium. J Vasc Surg. 13:596

Copyright: © 2025 Sharma S, et al. This is an open-access article distributed under the terms of the Creative Commons Attribution License, which permits unrestricted use, distribution, and reproduction in any medium, provided the original author and source are credited.

AAV-GFP
Cardiac-injected



AAV-tdTomato
Forelimb-injected



Supplementary figure 1: An image showing the visualization of cardiac-innervating (left) and forelimb-innervating (right) neurons within the stellate ganglia; The cardiac-injection was performed using AAV-GFP tracers while paw-injection was per-formed using AAV-tdTomato injections. Scale bar: 200 μ m