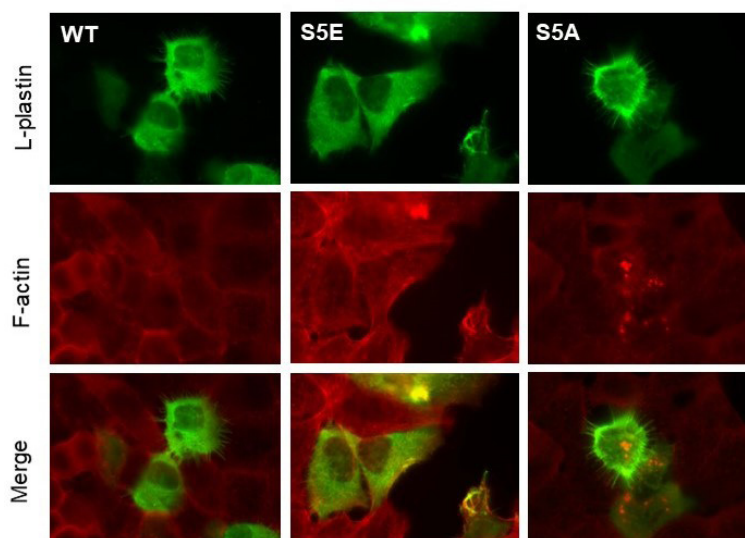
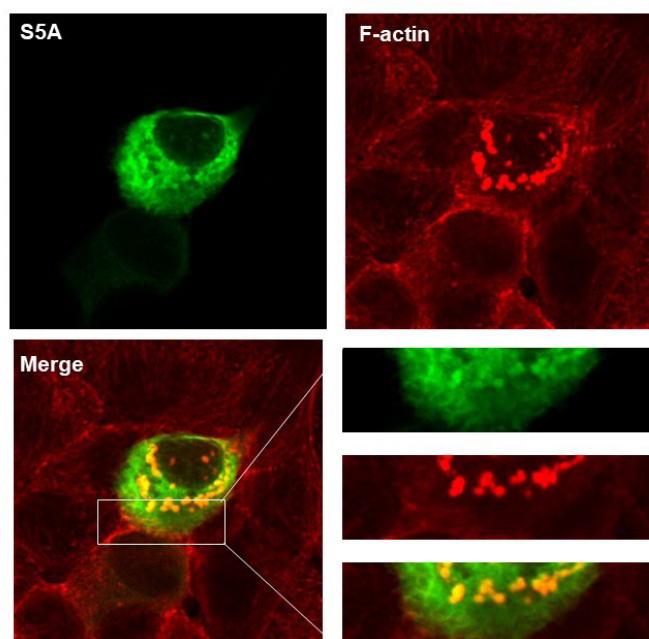


Supplementary Figure 1A



Supplementary Figure 1B


**Figure 1:** Design of cropland sites along with precipitation gradients from east to west in Jilin.

**Correspondence to:** Aideen Long, Department of Clinical Medicine, Trinity College Dublin and Trinity Translational Medicine Institute, Dublin, Republic of Ireland, E-mail: longai@tcd.ie

**Received:** 1-Jun-2022, Manuscript No. JCM-22-16866; **Editor assigned:** 3-Jun-2022, Pre QC No. JCM-22-16866; **Reviewed:** 17-Jun-2022, QC No. JCM-22-16866; **Revised:** 24-Jun-2022, Manuscript No. JCM-22-16866; **Published:** 04-Jul-2022, DOI: 10.35248/2157-2518.22.13.388

**Citation:** Foran E, Freeley M, Long A (2022) L-plastin Expression in HCT 116 Colorectal Cells Increases Migration and ROS in an NADPH Oxidase-Dependent Manner. J Carcinog Mutagen. 13:388.

**Copyright:** © 2022 Foran E, et al. This is an open-access article distributed under the terms of the Creative Commons Attribution License, which permits unrestricted use, distribution, and reproduction in any medium, provided the original author and source are credited.