

Risk Factors of Hypovitaminosis D in Adolescents, Shanghai, China: A Cross-Sectional Study

Chun-dan Gong¹, Zheng Chen¹, Qiao-ling Wu¹, Dan Zhang¹, Zheng-yan Zhao² and Yong-mei Peng^{1*}

¹Department of Child Health Care, Children's Hospital of Fudan University, Shanghai 2011102, China

²Children's Hospital of Medical College of Zhejiang University, Zhejiang 310003, China

Abstract

Background and Objectives: Hypovitaminosis D is prevalent worldwide. Accumulating researches suggested vitamin D deficiency is associated with obesity and dyslipidemia. But the relationship is still controversial. This study was aimed to evaluate the vitamin D status in Chinese adolescents, to find out the risk factors of hypovitaminosis D and its association with obesity.

Methods: A cross-sectional survey of serum 25(OH)D, glycolipids, anthropometric measurements and life style investigation was done in 441 youths. The prevalence of hypovitaminosis D was determined. The influence factors of 25(OH)D concentration were analysed. Multi-variation logistic regression was utilized to find the risk factors of hypovitaminosis D. The association of vitamin D3 and the metabolic indice was analysed by gender.

Results: The mean serum 25(OH)D concentration was 21.9 ± 8.1 ng/ml. Boys had higher 25(OH)D than girls (22.4 ± 8.1 ng/ml vs. 19.0 ng/ml (P25: 15.5 ng/ml, P75: 25.2 ng/ml), $p < 0.05$). The prevalence of hypovitaminosis D was 42.4%. The prevalence of vitamin D deficiency in girls was significantly higher than in boys (55.4% vs. 39.8%, $p < 0.01$). The mean concentration of 25(OH)D in winter was 19.6 ng/ml, significantly lower than that in summer (25.6 ± 7.8 ng/ml, $p < 0.001$). Significant differences were found in gender ($p = 0.005$), age ($p < 0.001$), BMI-SDS ($p = 0.003$), WC-SDS ($p = 0.005$), seasons ($p < 0.001$) and NAFLD ratios ($p = 0.018$) among groups of vitamin D sufficiency, insufficiency and deficiency. The logistic regression suggested that female (OR=2.45, $p = 0.001$), older ages (OR=1.29, $p = 0.011$) and winter (OR=1.96, $p = 0.038$) were risk factors of vitamin D deficiency. In male adolescents, HDL was protective factor of 25(OH)D concentrations (OR=0.22, $p = 0.009$). BMI and WC were of no association with vitamin D. No relationship between 25(OH)D and metabolic indice or anthropometric measurements in girls was found.

Conclusions: The vitamin D3 status in adolescents was very worrying. The risk factors of hypovitaminosis D were female, older ages and winter. 25(OH)D concentration had no relationship with BMI, WC, NAFLD in both genders.

Keywords: Adolescents; Children; 25(OH)D; Vitamin D₃; BMI; Glycolipid metabolism

Abbreviations: 25(OH)D: 25-Hydroxyvitamin D; BMI-SDS: Body Mass Index Standard Deviation Score; WC: Waist Circumstance; WC-SDS: Waist Circumstance Standard Deviation Score; NAFLD: Nonalcoholic Fatty Liver Disease; HDL: High Density Lipoprotein Cholesterol; LDL: Low-Density Lipoprotein Cholesterol; TG: Triglyceride; TC: Total Cholesterol; HOMA-IR: Homeostasis Model Assessment Of Insulin Resistance

Introduction

The Vitamin D endocrine system plays several important roles in human's body, such as bone health, keratinocyte differentiation and immune system [1]. Accumulating research suggests vitamin D deficiency is high risk factors of obesity, diabetes and cardiovascular disease. It also has been extensively studied in other diseases such as breast cancer [2], systemic lupus erythematosus [3], asthma [4] etc.

Vitamin D can be obtained from nutritional origin or be synthesized by skin under sun exposure. But few natural foods contain vitamin D, including deep fish oil. And lack of the knowledge that sun exposure is the major source of vitamin D also is the main cause of vitamin D deficiency [5].

Hypovitaminosis D is prevalent worldwide. 37.4% healthy children in Canada had insufficient vitamin D status [6]. A survey carried out in Korea showed that 71% adolescents had vitamin D3 deficiency [7]. 51.2% of boys living in San Antonio los Cobres had severe vitamin D deficiency and no one had optimal vitamin D in a research carried out

by Hirschler et al. [8]. A population-based survey in Greenland showed that vitamin D status was affected by diet pattern and ethnicity [9].

In China, there was no national survey on population's vitamin D status. But some regional studies have been carried out. Compared to the large body of adults' researches, investigations focused on children was relatively smaller. A survey carried out among 1-month to 16-year-old children showed that the total prevalence of hypovitaminosis D was 5.4% but increased with age (46.4% at 12-16 age stage) [10]. Another analysis focused on adolescent girls showed that 57.8% of subjects were vitamin D deficient [11]. To update, there has been no survey carried out in adolescents in Shanghai, which is the most economically advanced city in China and with lots of high buildings which may influence the exposure to sunlight. And the association between vitamin D and anthropometry or glycolipids hasn't been explored, neither. Thus in the present study, the serum of 25(OH)D and glycolipid profile of both adolescent boys and girls were investigated. It aimed to find out the risk factors of vitamin D deficiency and whether it was associated with

***Corresponding author:** Yong-mei Peng, Department of Child Health Care, Children's Hospital of Fudan University, 399 Wanyuan Road, Shanghai 201102, China, Tel: +86 2164931229, Fax: +86 2164043900; E-mail: ympeng@fudan.edu.cn

Received March 31, 2015; Accepted April 20, 2015; Published April 25, 2015

Citation: Gong C, Chen Z, Wu Q, Zhang D, Zhao Z, et al. (2015) Risk Factors of Hypovitaminosis D in Adolescents, Shanghai, China: A Cross-Sectional Study. J Nutr Disorders Ther 5: 158. doi:10.4172/2161-0509.1000158

Copyright: © 2015 Gong C, et al. This is an open-access article distributed under the terms of the Creative Commons Attribution License, which permits unrestricted use, distribution, and reproduction in any medium, provided the original author and source are credited.

glucose and lipids metabolism. Therefore, it may help to make options to ameliorate the status of vitamin D deficiency.

Subjects and Methods

Subjects

Fifteen elementary and junior high schools in Shanghai's two districts were chosen by using cluster sampling. The details of sampling were described elsewhere [12]. The flow diagram was shown in (Figure 1). Briefly, after primary survey on body weight and height, 9- to 15-year-old adolescents with normal weight and high body mass index (BMI) were equally recruited in this study. The inclusion criteria conclude that the subjects should be single birth, without congenital diseases, chromosome abnormality, hereditary metabolic diseases and abnormal skeletal development. Totally 441 students having complete data of physical examinations and serum 25(OH)D concentrations were included in this research. The research was carried out in two batches (Nov. 2011 to Jan. 2012(winter), July to Aug. 2012(summer)). Signed informed consent was obtained from each child's parent or

guardian. Ethical approval was obtained from ethics committee of Children's Hospital of Fudan University.

Anthropometric measurements

Team members of this study were trained before research. Body weight and height were obtained using Seca stadiometer and electronic scale, with the participants wearing light underwear and barefoot. Waist circumference was measured at the narrowest point between the lower border of the rib cage and the iliac crest. Body mass index (BMI) was calculated according to the equation: $BMI = \text{body weight (kg)} / \text{height}^2 \text{ (m}^2\text{)}$. As BMI and WC change with age and sex, BMI standard deviation score (BMI-SDS) and WC standard deviation score (WC-SDS) were calculated by LMS method [13] for each one according to the references of BMI and WC distribution of Chinese children and adolescents [14,15]. Physical examination was performed to evaluate the participants' health status. Non-alcoholic fatty liver disease (NAFLD) was identified by ultrasonography and recorded as absent, mild, moderate and severe [16]. The examination was performed by a same radiologist using Premier-Siemens equipment.

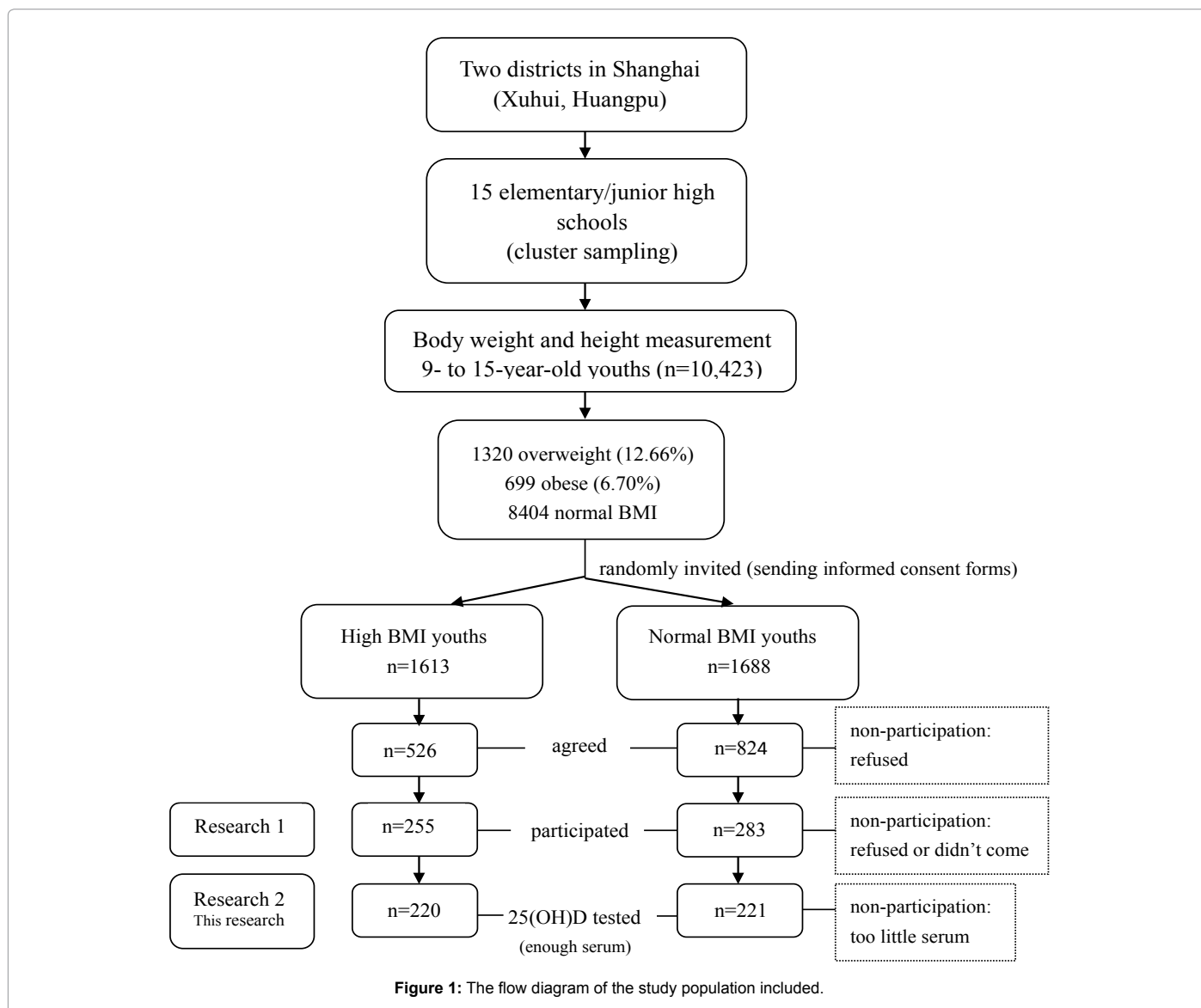


Figure 1: The flow diagram of the study population included.

Life style investigation

Questionnaires about physical activities and dietary habits were filled out collaborated by the children and their guardians. The questionnaire contained the questions like: How does your child go to school? What's the frequency of physical education lessons every week? Any other sport activities like running, swimming, basketball? Does your child prefer eating meat or vegetable? How much milk does your child consume? Does your child take nutritional supplements? What kind and how much?

Biochemical measurements

Blood samples were taken from the participants after at least 8-hour fast. Serum were obtained by centrifuging and stored at -80°C. Serum 25(OH)D concentrations were measured by electrochemical luminescence using Roche E411 analyzer and vitamin D total kit was purchased from Roche Diagnostics GmbH (Mannheim, Germany). The coefficients of variation (CV) of intra-assay and intermediate precision were $\leq 7.5\%$ and $\leq 13.6\%$. Total cholesterol (TC), triglyceride (TG), high density lipoprotein cholesterol (HDL), low density lipoprotein cholesterol (LDL), glucose were tested by standard methods using a Hitachi 7180 analyzer (Hitachi High Technologies Corp, Tokyo, Japan). The CVs of intra-assay were less than 8% and inter-assay less than 10% for all the items. Electrochemical Luminescence was used to measure insulin and peptide C by Roche E601 analyzer. The CVs of intra-assay and intermediate precision were $\leq 1.5\%$ and $\leq 4.9\%$ for insulin, $\leq 4.6\%$ and $\leq 5.0\%$ for peptide C.

Diagnose of Obesity and Overweight

Obesity was defined on the basis of BMI above the 95th percentile for age and gender on the BMI percentile charts for Chinese children and adolescents and overweight above the 85th percentile [17].

Vitamin D Status

Vitamin D status was judged by the serum concentration of 25(OH)D and graded as sufficiency: >75 nmol/L (30 ng/ml), insufficiency: 50-75 nmol/L (20-30 ng/ml), deficiency: <50 nmol/L (20 ng/ml) and severe deficiency: <25 nmol/L (10 ng/ml) [5].

Statistical Analyses

SPSS 19.0 was used to perform statistical analysis. Mean \pm standard deviation of data was given for normally-distributed variables. Median, interquartile range was given for non-normally distributed data.

ANOVA or Kruskal-Wallis H test was used to compare the means among groups. Chi-square test was used to compare the prevalence of NAFLD among different groups. Multivariate logistic regression was utilized to find the risk factors of hypovitaminosis D. Missing data was not included in statistical analysis and the number of missing data was listed in tables.

Results

The characteristic of the study population

Four hundred and forty-one adolescents participated in this research, among which 284 boys and 157 girls. Three hundred and thirty-eight were examined during Nov. 2011 and Jan. 2012(winter) and 103 during Oct. 2011 and July 2012 (summer). The mean age was 12 years old. Average BMI was 22.0 ± 4.7 kg/m² and boys had higher BMI than girls. It was of no significant difference between the mean value of BMI-SDS of boys and girls. The median WC-SDS of boys was 1.18, significantly higher than that of girls (0.8 ± 1.0 , $p=0.029$). No statistical difference of physical activities was found between males and females (Table 1).

Vitamin D status of the study population

The mean concentration of serum 25(OH)D in the whole population was 21.9 ± 8.1 ng/ml (Table 1). Forty-two point four percent of the adolescents were vitamin D deficient, with 3.0% being severe deficient. Only 17.2% of the population had optimal 25(OH)D concentration.

Difference of 25(OH)D between gender

Compared to the boys' (22.4 ± 8.1 ng/ml), girls had much lower 25(OH)D concentration (19.0 ng/ml (15.5 ng/ml, 25.2 ng/ml), $p<0.05$). The prevalence of vitamin D deficiency in male and female adolescents was shown in (Figure 2). It was 55.41% in girls, significantly higher than that in boys ($p<0.005$). More boys were vitamin D insufficient while more girls were deficient. Only 18.0% in boys and 16.0% in girls had ideal vitamin D status.

Differences of 25(OH)D among ages

The concentrations of 25(OH)D decreased with ages (Figure 3). The concentration of 25(OH)D in adolescents aged 10- to 12-year-old was about 23.0 ng/ml, while that of adolescents aged 13- to 15-year-old was below 20.0 ng/ml, which was significantly lower than the former.

Fluctuation of 25(OH)D among seasons

The 25(OH)D concentration of subjects examined in winter was

Variables	Total n=441	Male n=284	Female n=157	P
Age (y)	12 (11,13) ²	12 (11,13)	12 (12,13)	0.683
Body weight (kg)	53.0 (45.6,65.0)	58.0 \pm 16.6	51.7 \pm 12.0	<0.001
Body height (cm)	158.5 \pm 10.23	159.7 \pm 11.3	156.3 \pm 7.3	<0.001
BMI (kg/m ²)	22.0 \pm 4.7	22.5 \pm 4.9	21.1 \pm 4.2	0.002
BMI-SDS	1.0 \pm 1.2	1.0 \pm 1.3	1.0 \pm 1.2	0.620
WC (cm)	71.6 (65.0,81.0)	75.7 \pm 12.0	69.3 \pm 8.8	<0.001
WC-SDS	1.1 (0.2,1.7)	1.2 (0.3,1.7)	0.8 \pm 1.0	0.029
25(OH)D (ng/ml)	21.9 \pm 8.1	22.4 \pm 8.1	19.0 (15.5,25.2)	0.048
Physical exam time (min/w)	290 (221,360) (n=435)	287 (220,373) (n=279)	290 (234,343) (n=156)	0.647

¹ Kruskal-Wallis H test or t test were used to determine differences for continuous and categorical variables between male and female. NAFLD, nonalcoholic fatty liver disease.

² Medians, interquartile ranges in parentheses (all such values).

³ Mean \pm SD (all such values).

Table 1: The age and anthropometric indice of 441 adolescents aged 9-15-year-old.

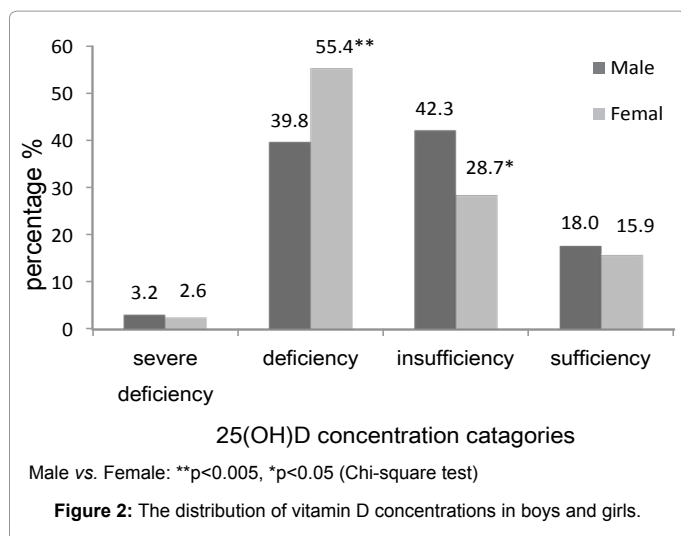


Figure 2: The distribution of vitamin D concentrations in boys and girls.

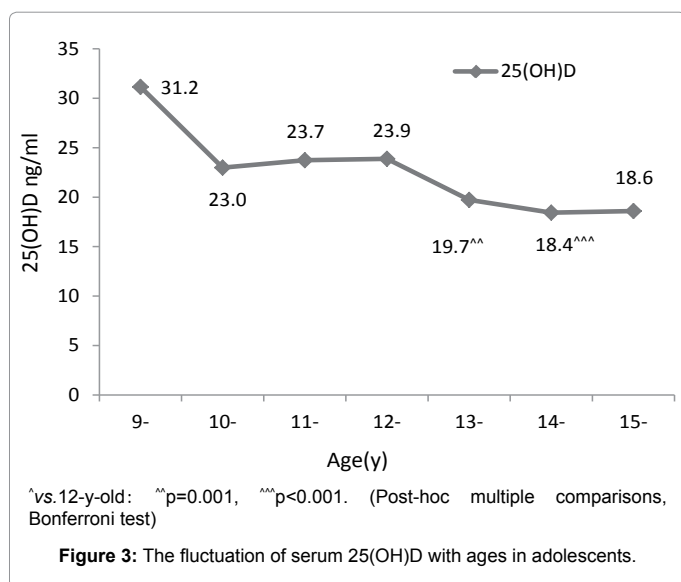


Figure 3: The fluctuation of serum 25(OH)D with ages in adolescents.

19.6 ng/ml, significantly lower than the mean value in summer (25.6 ± 7.8 ng/ml, $p<0.001$). The fluctuation of 25(OH)D concentration in different months were shown in (Figure 4). December and January showed the lowest concentrations, while November and July presented higher values. Hypovitaminosis D prevalence also showed the same fluctuation with months (Figure 5). More than half adolescents had vitamin D deficiency in the two coldest months (Nov and Jan).

Influence factors of 25(OH)D concentration

The subjects were divided into three groups depending on the serum 25(OH)D concentration: deficiency, insufficiency and sufficiency. Univariate analyses were done to explore factors' (like gender, age, BMI, season, etc.) associations with 25(OH)D status (Table 2). The median age of deficient subjects was significantly higher than that of indeficent ones (13 vs. 12, $p<0.001$). More girls than boys were likely to be vitamin D deficient ($p=0.005$). The mean BMI of deficient group was 23.0 ± 5.2 kg/m², significantly higher than that of insufficient and sufficient groups (21.5 ± 4.1 kg/m², 20.4 ± 3.9 kg/m², $p<0.001$). The median waist circumference of deficient group was higher than indeficent group ($p=0.001$). The ratio of vitamin D deficiency in winter

was higher than in summer ($p<0.001$). The prevalence of NAFLD in deficient group was 19.0%, higher than that of insufficient (15.8%) and sufficient (5.3%) group ($p=0.018$). The total physical activity time per week was of no statistical difference among the three groups ($p=0.751$) and neither was the way to go to school.

As to dietary habits, the frequency of taking milk differed between the three groups ($p=0.033$). Preference to vegetable or meat didn't differ among groups. The frequencies of taking yoghurt, meat, egg and fish didn't differ among three groups. In the whole population, 58.7% subjects never took vitamin supplements. The ratios of subjects never taking supplements of calcium, zinc, iron and folic acid were up to 64.4%- 73.2%. Only 4.1% children take vitamin supplements every day.

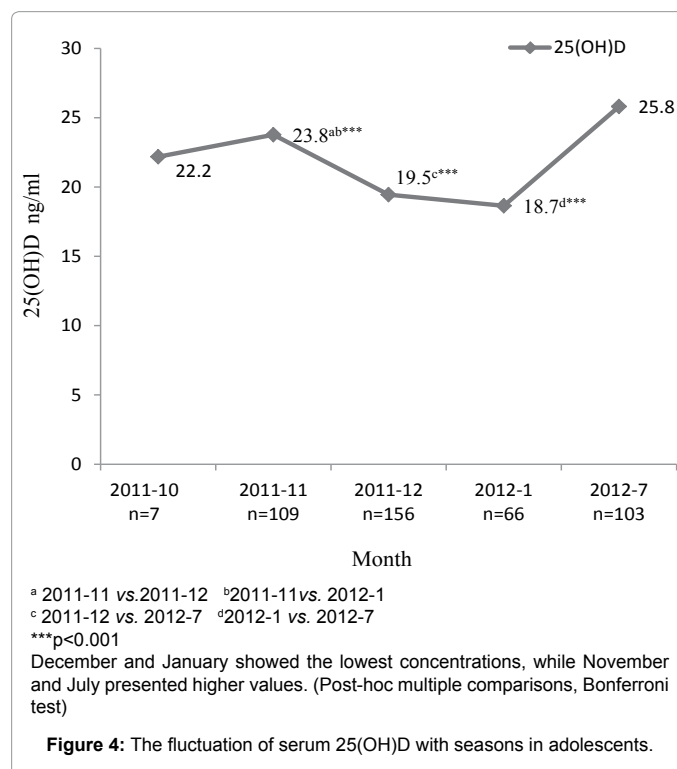


Figure 4: The fluctuation of serum 25(OH)D with seasons in adolescents.

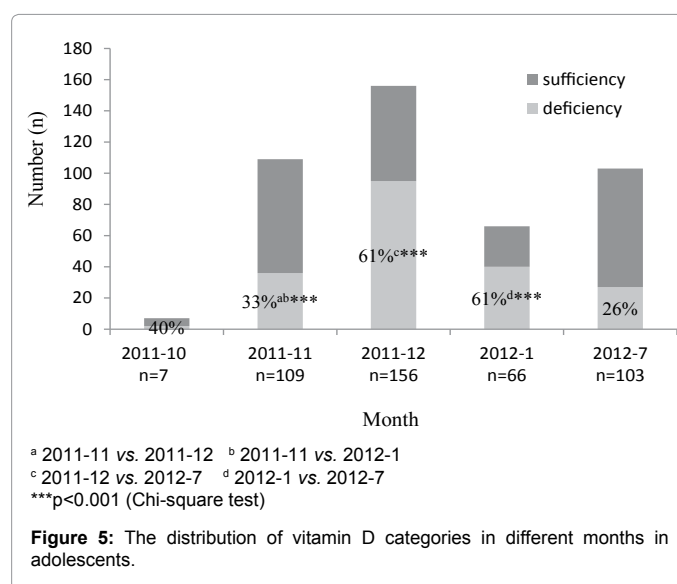


Figure 5: The distribution of vitamin D categories in different months in adolescents.

Variables	Deficiency n=200	Insufficiency n=165	Sufficiency n=76	p
25(OH)D (ng/ml)	14.9 ± 3.1 ²	24.3 ± 2.8	35.2 ± 4.5	<0.001
Age (yr)	13 (12,14) ³	12 (11,13)	12 (11,12)	<0.001
Gender (M/F)	113/87	120/45	51/25	0.005
BMI (kg/m ²)	23.0 ± 5.2	21.5 ± 4.1	20.4 ± 3.9	<0.001
BMI-SDS	1.2 ± 1.3	1.0 ± 1.2	0.6 ± 1.2	0.003
WC (cm)	73.2 (66.0,83.5)	72.4 ± 11.7	69.3 ± 9.8	0.001
WC-SDS	1.0 ± 1.0	0.9 ± 0.9	0.6 ± 1.0	0.005
Season (Winter/ Summer)	171/29	115/50	45/31	<0.001
NAFLD (%)	19.6 (n=194)	16.0 (n=163)	5.3 (n=75)	0.016
Transportation (walking+cycling/ car)	119/72	81/79	41/33	0.086
PE time (min/week)	285 (220,350) (n=193)	280 (227.5,367.5) (n=159)	305 (212.5,370)	0.751
Dietary pattern (1/2/3) ⁴	50/138/5	53/108/3	20/54/2	0.710

¹ANOVA, chi-square test or Kruskal-Wallis H test were to determine differences for continuous and categorical variables among three groups. NAFLD, nonalcoholic fatty liver disease.

² Mean ± SD (all such values).

³ Medians, interquartile ranges in parentheses (all such values).

⁴ Dietary pattern: 1=meat-based, 2=vegetable-meat-balanced, 3=vegetable-based

Table 2: The anthropometric indice and life styles in different serum 25(OH)D groups.

Less than 5% of the subjects take the supplements mentioned above every day. The frequencies of taking supplements did not differ among groups ($p \geq 0.05$).

With the variables of statistical difference among groups included, multivariate logistic regression analysis was performed (Table 3). It determined that the risk factors of vitamin D deficiency was gender (OR=2.45, $p=0.001$), age (OR=1.29, $p=0.011$) and season (OR=1.96, $p=0.038$). It presented that female and older children were likely to be vitamin D deficient. In winter, children were inclined to be hypovitaminosis D.

Associations between 25(OH)D and glycolipids

It had been found out that there were differences between boys and girls as to glycolipid metabolism [16]. The results of multivariate logistic regression analysis described above also showed that the associations of BMI or WC with vitamin D status were influenced by gender. So the analysis was done by gender separately.

The anthropometry parameters and biochemical measurements of boys with different 25(OH)D concentrations were listed in (Table 4). There were significant differences of BMI and WC among different 25(OH)D categories. Except of HDL, no statistical differences were found of TC, TG, LDL, insulin and HOMA-IR among groups. After including these four variables in multivariate logistic regression analysis, only HDL showed association with vitamin D status (OR=0.22, 95%CI 0.07-0.69, $p=0.009$). BMI, WC and NAFLD were no longer associated with vitamin D.

It was of no significant difference of girls' BMI, WC, TC, insulin and NAFLD among different 25(OH)D categories (Table 5).

Discussion

The results of this research showed that the vitamin D status in Chinese adolescents was very worrying. The mean concentration was 21.9 ± 8.1 ng/ml, lower in girls. 42.4% adolescents in the population were vitamin D deficient. It was close to the results of an investigation done in paediatric population in Hangzhou, China [10]. The survey investigated the 25(OH)D concentration in 6,008 children aged 1-month to 16-year-old. The ratio of hypovitaminosis D was 46.4% in adolescents aged 12- to 16-year-old, which was close to this study.

Older children were more likely to be hypovitaminosis D. This phenomenon was also reported by other researches. CA Stoian's [6] results showed that the odds ratio of children aged 9-13-year-old to be suboptimal vitamin D was 2.49 (95%CI: 1.72-3.59, $p<0.001$) compared with children aged 2-4.99-year-old. In Zhu's study mentioned above [10], infants had the highest 25(OH)D concentration (98.7 ± 47.1 nmol/L) and the mean concentration of 25(OH)D decreased from 69.6 ± 30.4 nmol/L in 2-5-year-old toddlers, 56.1 ± 19.9 nmol/L in 6-11-year-old children to 52.1 ± 17.0 nmol/L in 12-16-year-old adolescents. The high concentration of 25(OH)D in infants and toddlers may due to the routine supplementation of vitamin D. In this study the decreasing tendency of 25(OH)D with age may cause by shrinking outdoor activities due to heavy school work and sunscreen cream using in girls. Further researches are needed to identify the reasons.

The finding of association between vitamin D and seasons was recognized in a large body of researches. The potential essence was the association with sunlight exposure. The sunlight alternates with seasons

Variables	p	OR(95% CI)
Gender	0.002	2.22 (1.35, 3.65)
Age	0.001	1.42 (1.16, 1.74)
BMI-SDS	0.441	1.20 (0.76, 1.90)
WC-SDS	0.748	1.10 (0.62, 1.94)
Season	0.037	2.00 (1.04, 3.83)
Milk intake frequency	0.122	0.88 (0.74, 1.04)
NAFLD	0.112	1.47 (0.91, 2.37)

Table 3: Multivariate logistic regression analysis of the risk factors of vitamin D deficiency.

Variables	Deficiency (n=113)	Insufficiency (n=120)	Sufficiency (n=51)	p
BMI (kg/m ²)	24.1 ± 5.5 ²	21.8 ± 3.9	20.4 ± 4.3	<0.001
WC (cm)	79.9 ± 13.0	73.7 ± 12.0	69.8 ± 10.7	<0.001
TC (mmol/L)	4.2 ± 0.8	4.2 ± 0.6	4.3 ± 0.7	0.586
TG (mmol/L)	0.9 (0.6,1.2) ³	0.8 (0.6,1.0)	0.7 (0.6,1.1)	0.387
HDL (mmol/L)	1.3 ± 0.2	1.5 ± 0.3	1.6 ± 0.3	<0.001
LDL (mmol/L)	2.5 ± 0.7	2.4 ± 0.6	2.4 ± 0.7	0.702
Glu (mmol/L)	5.0 ± 0.4	5.0 ± 0.5	5.0 ± 0.5	0.591
Insulin (μIU/ml)	6.9 (4.4,11.3)	7.0 (4.9,10.8)	6.5 ± 2.8	0.815
HOMA-IR	1.5 (1.0,2.6)	1.6 (1.0,2.4)	1.5 ± 0.7	0.879
NAFLD (%)	27.3 (n=110)	19.3 (n=119)	5.9 (n=51)	0.007

¹ ANOVA, chi-square test or Kruskal-Wallis H test were to determine differences for continuous and categorical variables among three groups. NAFLD, nonalcoholic fatty liver disease; HOMA-IR, homeostasis model assessment of insulin resistance.

² Mean ± SD (all such values).

³ Medians, interquartile ranges in parentheses (all such values).

Table 4: The anthropometric indice and glycolipids of boys in different serum 25(OH)D groups.

Variables	Deficiency (n=87)	Insufficiency (n=45)	Sufficiency (n=25)	p
BMI (kg/m ²)	21.4 ± 4.4 ²	20.7 ± 4.5	20.4 ± 3.0	0.448
WC (cm)	69.6 ± 8.5	69.1 ± 10.1	68.3 ± 7.9	0.793
TC (mmol/L)	4.3 ± 0.8	4.4 ± 0.6	4.2 ± 0.7	0.510
TG (mmol/L)	0.8 (0.6,1.0) ³	0.8±0.3	0.9 ± 0.3	0.314
HDL (mmol/L)	1.5 ± 0.3	1.6 ± 0.3	1.5 ± 0.2	0.389
LDL (mmol/L)	2.5 ± 0.6	2.5 ± 0.5	2.4 ± 0.6	0.841
Glu (mmol/L)	4.8 ± 0.4	4.7 ± 0.4	4.7 ± 0.3	0.440
Insulin (μIU/ml)	6.5 (4.7,9.6)	8.3 ± 6.6	6.8 ± 2.0	0.844
HOMA	1.4 (1.0,2.0)	1.4 (0.9,2.2)	1.4 ± 0.4	0.857
NAFLD (%)	8.7 (n=84)	6.8 (n=44)	4.2 (n=24)	0.740

¹ ANOVA, chi-square test or Kruskal-Wallis H test were to determine differences for continuous and categorical variables among three groups. NAFLD, nonalcoholic fatty liver disease; HOMA-IR, homeostasis model assessment of insulin resistance.
² Mean±SD (all such values).
³ Medians, interquartile ranges in parentheses (all such values).

Table 5: The anthropometric indice and glycolipids of girls in different serum 25(OH)D groups.

significantly in China. Thus in winter the people had worse vitamin D status. But even in summer, the mean concentration of 25(OH)D in the study population was only 25.6 ng/ml, with about 1/4 being hypovitaminosis D. The situation was similar to that of female adults in Saudi Arabia [18], which was at lower latitude than Shanghai. Even in Thailand, a tropical country, the prevalence of vitamin D deficiency in adolescents was up to 10% [19].

The relevancy between vitamin D and dietary habits was also explored in other researches. Peters et al. [20] found that milk intake was an independent predictor of 25(OH)D. But no association between them was reported by Valeria Hirschler et al. [8]. In this study, the frequency of milk intake differed among vitamin D sufficient and deficient population. But when adjusted by age, gender and other factors, no association was found between the frequency of milk intake and 25(OH)D. The main reason could be that milk fortified with vitamin D is not so popular in China. There are a small number of nature foods that are rich in vitamin D, such as fish oil, fatty fish, and eggs. Except for eggs, other foods are not common in Shanghaiese's dietary pattern. So it was acceptable that the common dietary didn't affect the status of vitamin D. By contrast, in Greenland, a decrease in the intake of traditional diet (including fish, seal and whale, etc.) was associated with a decrease in 25(OH)D [9].

To update, there are large body of researches reported the association between vitamin D and obesity or metabolic syndrome. In boys whose mean age was 10.5, 25(OH)D was negatively associated with fasting blood glucose in one city ($r=-0.22$), while was adversely associated with insulin and HOMA-IR in another city ($r=-0.25$, $r=-0.26$, respectively) [8]. Therefore the author suggested that suboptimal vitamin D was a risk factor of future diabetes. In obese children aged 6-16 year old, 92% had hypovitaminosis D [21] and 25(OH)D was negatively correlated with HOMA-IR ($r=-0.19$, $p=0.001$) and 2-h glucose of oral glucose tolerance test ($r=-0.12$, $p=0.04$). The value of 25(OH)D for predicting abdominal obesity in Korean youths (12-19-year-old) was determined to be 17.6 ng/ml [7]. In adults, the negative association between vitamin D and insulin was also founded [22]. Furthermore a longitudinal follow-up of about 4000 residents living in Australia found that compared to those who had optimal 25(OH)D concentration, the odd ratios of people having 25(OH)D less than 18ng/ml and 18-23ng/ml to have the onset of metabolic syndrome were up to 1.41 and 1.74 [23].

In spite the accumulating evidences supporting the association of vitamin D with obesity, some researches refuted the correlation. It was presented in Cynthia A Lamendola's study [24] that there were no differences of 25(OH)D concentration among normal weight and obese ones. And in Poomthavorn P's investigation [19], 25(OH)D concentration had nothing to do with BMI-SDS and insulin. The results we got in this research seemed to be similar to theirs. And no correlation was found between vitamin D and glucose/insulin, differing from Valeria Hirschler's results [8]. It may due to ethnic difference.

Several limitations of this study should be noticed. First, as it was a cross-sectional study, the risk factors of vitamin D deficiency found could not be determined to be the causalities. Second, we had no information on sun exposure and time spent outdoors.

Conclusion

In conclusion, the results of this study suggested worrying prevalence of vitamin D deficiency. The risk factors of Hypovitaminosis D were determined to be female, older age and winter. 25(OH)D concentration was not associated with BMI, WC, NAFLD. Therefore, advocacy of more sun exposure and vitamin D supplementation should be considered in adolescent health promotion. For adolescents having heavy school work and few opportunities doing outdoor sports in Shanghai, vitamin D supplements may need to be applied routinely.

Acknowledgement

We gratefully acknowledge the cooperation of Shanghai Xuhui and Huangpu District Education Bureau and the teachers in the fifteen schools. We also were grateful to Qing Lu, Dongyong Yan and Ye Zhu for their technical assistance.

The authors' contributions were as follows--YMP and ZYZ were responsible for the initial conception and design of the study. CDG, QLW, ZC, DZ carried out the survey. CDG contributed to the statistical analysis and interpretation data and wrote the first draft of the paper. All authors contributed to the critically revision of the article and approved the final published version to be published.

Funding was provided by the National Key Technology R&D Program during the 11th Five-year Plan Period of China (2009BAI80B03).

References

- Bouillon R, Carmeliet G, Verlinden L, van Etten E, Verstuyf A, et al. (2008) Vitamin D and human health lessons from Vitamin D Receptor Null Mice. *Endocrine Rev* 29: 726-776.
- Alco G, Igdem S, Dincer M, Ozmen V, Saglam S, et al. (2014) Vitamin D levels in patients with breast cancer: importance of dressing style. *Asian Pac J Cancer Prev* 15: 1357-1362.
- Wahono CS, Rusmini H, Soelistyoningsih D, Hakim R, Handono K, et al. (2014) Effects of 1,25(OH)₂D₃ in immune response regulation of systemic lupus erythematosus (SLE) patient with hypovitamin D. *Int J Clin Exp Med* 7: 22-31.
- Checkley W, Robinson CL, Baumann LM, Hansel NN, Romero K, et al. (2014) 25-hydroxy vitamin D levels are associated with childhood asthma in a population-based study in Peru. *Clin Exp Allergy* 45: 273-282.
- Holick MF, Chen TC (2008) Vitamin D deficiency: a worldwide problem with health consequences. *Am J Clin Nutr* 87: S1080-S1086.
- Stoian CA, Lyon M, Cox RG, Stephure DK, Mah JK (2011) Vitamin D concentrations among healthy children in Calgary, Alberta. *Paediatr Child Health* 2011; 16: 82-86.
- Nam GE, Kim do H, Cho KH, Park YG, Han KD, et al. (2012) Estimate of a predictive cut-off value for serum 25-hydroxyvitamin D reflecting abdominal obesity in Korean adolescents. *Nutrition Research* 32: 395-402.
- Hirschler V, Maccallini G, Aranda C, Fernando S, Molinari C (2013) Association of vitamin D with glucose levels in indigenous and mixed population Argentinean boys. *Clinical Biochemistry* 46: 197-201.
- Andersen S, Laurberg P, Hvingel B, Kleinschmidt K, Heickendorff L, et al. (2013) Vitamin D status in Greenland is influenced by diet and ethnicity: a

- population-based survey in an Arctic society in transition. *Br J Nutr* 109: 928-935.
10. Zhu Z, Zhan J, Shao J, Chen W, Chen L, et al. (2012) High prevalence of vitamin D deficiency among children aged 1 month to 16 years in Hangzhou, China. *BMC Public Health* 12: 126.
 11. Foo LH, Zhang Q, Zhu K, Ma G, Hu X, et al. (2009) Low Vitamin D Status Has an Adverse Influence on Bone Mass, Bone Turnover, and Muscle Strength in Chinese Adolescent Girls. *J Nutr* 139: 1002-1007.
 12. Gong CD, Wu QL, Chen Z, Zhang D, Zhao ZY, et al. (2013) Glycolipid metabolic status of overweight/obese adolescents aged 9- to 15-year-old and the BMI-SDS/BMI cut-off value of predicting dyslipidemia in boys, Shanghai, China: a cross-sectional study. *Lipids in Health and Disease* 12: 129-137.
 13. Cole TJ, Bellizzi MC, Flegal KM, Dietz WH (2000) Establishing a standard definition for child overweight and obesity worldwide: international survey. *BMJ* 320: 1240-1243.
 14. Ji CY, Sung Ry, Ma GS, Ma J, He ZH, Chen TJ (2010) Waist circumference distribution of Chinese school-age children and adolescents. *Biomde Environ Sci* 23: 12-20.
 15. Li H, Ji CY, Zong XN, Zhang YQ (2009) Body mass index growth curves for Chinese children and adolescents aged 0-18 years. *Chin J Pediatr* 47: 493-498.
 16. Shannon A, Alkhouri N, Carter-Kent C, Monti L, Devito R, et al. (2011) Ultrasonographic quantitative estimation of hepatic steatosis in children with NAFLD. *J Pediatr Gastroenterol Nutr* 53: 190-195.
 17. Group of China Obesity Task Force (2004) Body mass index reference norm for screening overweight and obesity in Chinese children and adolescents. *Chin J Epidemiol* 25: 97-102.
 18. Kanan RM, Al Saleh YM, Fakhoury HM, Adham M, Aljaser S, et al. (2013) Year-round vitamin D deficiency among Saudi female out-patients. *Public Health Nutrition* 16: 544-548.
 19. Poomthavorn P, Saowan S, Mahachoklertwattana P, Chailurkit L, Khlairit P (2012) Vitamin D status and glucose homeostasis in obese children and adolescents living in the tropics. *Int J Obes* 36: 491-495.
 20. Peters BS, dos Santos LC, Fisberg M, Wood RJ, Martini LA (2009) Prevalence of vitamin D insufficiency in Brazilian adolescents. *Ann Nutr Metab* 54: 15-21.
 21. Olson ML, Maalouf NM, Oden JD, White PC, Hutchison MR (2012) Vitamin D deficiency in obese children and its relationship to glucose homeostasis. *J Clin Endocrinol Metab* 97: 279-285.
 22. Brenner DR, Arora P, Garcia-Bailo B, Wolever TM, Morrison H, et al. (2011) Plasma vitamin D levels and risk of metabolic syndrome in Canadians. *Clin Invest Med* 34: E377.
 23. Gagnon C, Lu ZX, Magliano DJ, Dunstan DW, Shaw JE, et al. (2012) Low serum 25-hydroxyvitamin D is associated with increased risk of the development of the metabolic syndrome at five years: results from a national, population-based prospective study (The Australian Diabetes, Obesity and Lifestyle Study: AusDiab). *J Clin Endocrinol Metab* 97: 1953-1961.
 24. Lamendola CA, Ariel D, Feldman D, Reaven GM (2012) Relations between obesity, insulin resistance, and 25-hydroxyvitamin D. *Am J Clin Nutr* 95: 1055-1059.