

Prevalence of Glutathione S Transferase (GSTM1, GSTP1 and GSTT1) Genes Polymorphisms among Pediatric Sudanese Patients with Sickle Cell Anemia

Naif Taleb Ali^{1*}, Ozaz Yagoup Mohammed Ahmed¹, Fayad Osman Mohammed² and Huda Mohammed Haroun¹

¹Department of Hematology and Immunohematology, Faculty of Medical Laboratory Sciences, Gezira University, Sudan; ²Department of Molecular Biology, Institute of Endemic Diseases, University of Khartoum, Khartoum, Sudan

ABSTRACT

Background: Sickle cell disease (SCD) is taken into account as one of the foremost types of anemia in Sudan, particularly in the western part of the country. The glutathione system plays a vital role in the removal of endogenous products of peroxidation of lipids, thus protecting cells and tissue against damage from oxidative stress. Impairment of the glutathione system as result of genetic polymorphisms of glutathione S-transferase (GST) genes is anticipated to increase the severity of SCD manifestations.

Aims/Objectives: This study was aimed to evaluate the rate of GSTM1, GSTT1, and GSTP1 gene polymorphisms among sickle cell anemia pediatric patients in Sudan.

Study design: Case control study

Place and duration of study: this study carried out in Khartoum town in Jafar Ibn Auf Pediatric Hospital / Khartoum during the period (June 2017 to June 2020).

Methodology: The total subjects of the confirmed diagnosis were 126 and 126 control. Among these cases of SCA 78 (61.9%) are males and 48 (38.1%) are female and for control 80 (63.5%) are male and 46 (36.5%) are female.

We measured the frequency distribution of the three GSTs gene polymorphisms, GSTM1 and GSTT1 genotypes were determined by polymerase chain reaction (PCR). GSTP1 genotyping was conducted with a PCR-restriction fragment length polymorphism assay, SPSS version 23 was used to analyze the data.

Results: The GSTM1 null genotype frequency was found to be slightly lower in the control group, (30.2% as opposed to 33.3% in SCA patients), but this difference was not considered to be statistically significant (OR = 1.16, 95% CI: 0.68-1.97; p-value = 0.5884), GSTT1 was found in 47.6% of SCA patients and 77.8% of the Control but the frequency of individuals carrying the GSTT1 null genotype was significantly higher among SCA patients, 52.4% compared to 22.2% of the Control; (OR = 3.85, 95% CI: 2.23-6.65; p-value = 0.0001). Individuals with a combined GSTM1 null/GSTT1 null genotype had an estimated 11.7-fold increased risk of SCA (OR=11.7; CI=2.67-51.2; p-value=0.0011).

The homozygous mutant type (Val/Val) of GSTP1 showed significant difference between patients and controls (OR= 6.53, 95% CI: 1.41-30.24; P-value = 0.0164).

Conclusion: The GSTT1 polymorphism and combined form of GSTM1 null/GSTT1 null genotype and the homozygous mutant type (Val/Val) of GSTP1 increase the risk of sickle cell anemia.

Keywords: Sickle cell disease; Glutathione S transferase polymorphisms

*Correspondence to: Naif Taleb Ali, Department of Hematology and Immunohematology, Faculty of Medical Laboratory Sciences, Gezira University, Sudan, Tel: 967772571390; E-mail: naiftalebali@gmail.com

Received: January 01, 2021; Accepted: January 21, 2021; Published: January 28, 2021

Citation: Ali NT, Ahmed OYM, Mohammed FO, Haroun HM (2020) Prevalence of Glutathione S Transferase (GSTM1, GSTP1 and GSTT1) Genes Polymorphisms among Pediatric Sudanese Patients with Sickle Cell Anemia. J Blood Disord Transfus 12: 451. DOI: 10.35248/2155-9864.21.12.451.

Copyright: © 2021 Ali NT, et al. This is an open-access article distributed under the terms of the Creative Commons Attribution License, which permits unrestricted use, distribution, and reproduction in any medium, provided the original author and source are credited.

INTRODUCTION

Sickle cell disease (SCD) is an inherited blood disease with several complications in various populations worldwide. The disease is caused by a point mutation in the hemoglobin β (HBB) gene, which codes for β -globin, found on chromosome 11a. This mutation results in the substitution of the amino acid valine for glutamic acid in the globulin protein, and leads to the production of an abnormal form of the hemoglobin molecule, which is the hemoglobin S (HbS) [1].

The disease afflicts about 20 million people worldwide, with a high prevalence of about 12 million people living in Africa [2]. The mortality rate for children under 5 years with SCD is estimated at 75–85% in Africa [3]. In Ghana, the prevalence of the disease is about 2% of births annually [4]. Vaso- occlusive crises (VOC) are a hallmark of SCD, which creates an economic burden and makes management of SCD patients difficult in developing countries [5]. The abnormal red blood cells, as a result of sickling, which is observed in SCD patients, may also lead to chronic intravascular hemolysis [6].

Glutathione S-transferases (GSTs) constitute a family of multifunctional enzymes that are coded for by at least eight distinct loci: alpha-(GSTA), mu (GSTM), theta-(GSTT), pi-(GSTP), sigma-(GSTS), kappa- (GSTK), omega-(GSTO), and zeta-(GSTZ), each one composed of one or more homodimeric or heterodimeric isoforms [7,8].

GSTs are involved in catalyzing reactions between glutathione (GSH) and a number of potentially toxic and carcinogenic electrophilic compounds [9].

GSTs also display peroxidase activity and can protect against oxidative damage through the combination with GSH, thereby maintaining cellular integrity [10,11].

Deficiency in the activity of this enzyme can be produced by inherited polymorphisms within specific GST genes, e.g., GSTT1 (22q11.23), GSTM1 (1q13.3), and GSTP1 (11q13) [12].

Polymorphisms of two isoforms of GST, GSTM1 and GSTT1, have been studied in many chronic diseases like cardiovascular and neurodegenerative diseases and these allelic variations have been linked to the inflammatory nature of these diseases [13].

In addition, genotypic and phenotypic variations in the activity of GSTs have been studied in relationship to the risk and prognosis of several cancers [14,15].

Sickle cell anemia is fatal diseases and have increasing prevalence in Sudan, there are published reports in anther countries about the association between GSTM1 and GSTT1null and GSTP1 polymorphism and Sickle cell anemia, so this study will fill the gab regarding this polymorphism and its association With Sickle cell anemia in Sudanese patients, also there are no data regarding the prevalence of GSTM1, GSTT1 and GSTP1 polymorphisms in pediatric with sickle cell anemia in Sudan. The results from our study will facilitate future studies such as genetic susceptibility to disease.

METHODS

Study design and population

The study is a case control study, including 126 Sudanese SCD pediatric patients and 126 Sudanese controls of similar age that were healthy and without significant medical history. The study protocol was in accordance with the local hospital research guidelines and written informed consent was obtained from all patients.

This study was carried out in Khartoum town in Jafar Ibn Auf Pediatric Hospital / Khartoum during the period (June 2017 to June 2020).

The complete blood count for the blood samples was carried out in the laboratory of Jafar Ibn Auf Pediatric Hospital by Sysmex KX21 Machine.

The DNA extraction and storage and molecular biology analysis were carried out performed in the department of Molecular biology Institute of Endemic Diseases (IEND) –University of Khartoum.

Clinical as well as laboratory data were obtained from medical records and interviews with the patients. Controls that were enrolled had normal complete blood counts, normal hemoglobinelectrophoresis.

Diagnosis of SCD was based on hemoglobin electrophoresis, Sickling test and clinical examination.

Molecular analysis

Blood samples and DNA extraction Blood samples of 5 mL were obtained from all participants, collected in sterile EDTA tubes, and then stored at -20°C until use.

DNA was extracted from EDTA blood samples by G-spin TM Total DNA extraction kit protocol intron biotechnology: the steps as the following, 200 μl of blood sample was placed in 1.5ml micro centrifuge tube, 20 μl proteinase K and 5 μl RNase A solution were added. The solution was mixed gently by vortex, and then 200 μl of Buffer BL was added into sample and mixed thoroughly and placed at RT for 2 minutes. The lysate was incubated at 56°C for 10 mins and briefly centrifuged to remove drops from the inside of the lid. Then, 200 μl of absolute ethanol was added into the lysate and mixed gently by inverting 5-6 times or pipetting. The mixture was applied to the spin column (in a 2 ml collection tube) and centrifuged at 13,000 rpm for 1 min. The filtrate was discarded and the spin column was placed in a new 2ml collection tube then 700 μl of buffer WA was added to the spin column, and centrifuged for 1 min at 13,000 rpm. The flow-through was discarded and 700 μl of buffer WB was added and centrifuged for 1 min at 13,000 rpm. The flow-through was discarded and the column was placed into a new 2ml collection tube, then again centrifuged for 1min to dry the membrane. Finally, the spin column was placed into a new 1.5ml tube, and 40 μl of buffer CE was directly added onto the membrane, and incubated for 1 min at room temperature, DNA was then eluted by centrifugation for 1min at 13,000 rpm. DNA purity was quantified using a NanoDrop Spectro-photometer, and the DNA integrity was checked using agarose gel electrophoresis.

Genotyping of GSTM1, GSTT1 and GSTP1 polymorphisms were determined by polymerase chain reaction (PCR) using a housekeeping B-globin gene as an internal control. The primer sequence and fragments produced are listed in Table 1.

The primers were synthesized by Sangon and PCR amplifications were carried out using the thermal cycler Applied QIAGEN (Rotor-Gene Q).

Eligibility Criteria

All titles and abstracts of articles retrieved by our search strategy are screened using prespecified inclusion and exclusion criteria to confirm eligibility. Eligible studies evaluated the effect of TRALI preventive strategies on the incidence and mortality of TRALI. TRALI preventive strategies is referred to 1) Male-only donor or predominantly male-only donor policy for plasma and/

Table 1: Primers sequences used or GSTM1, GSTT1, and GSTP1 genotyping.

Gene	Primers	Fragment size
GSTM1	F: GAACTCCCTGAAAAGCTAAAGC (T _m = 55.1°C) R: GTTGGGCTCAAATATACGGTGG (T _m = 56.9°C)	219 bp
GSTT1	F: TTCCTTACTGGTCCTCACATCTC (T _m = 57.2°C) R: TCACCGGATCATGGCCAGCA (T _m = 58.3°C)	480 bp
GSTP1	F: ACCCCAGGGCTCTATGGGAA (T _m = 58.3°C) R: TGAGGGCACAAGAAGCCCCT (T _m = 58.3°C)	176bp

or platelet products; 2) HLA and/or HNA antibodies screening of donors and subsequent deferral of positive-donors; 3) The exclusion of female donor with history of pregnancy or donor with previous transfusion. Studies meeting the following criteria were considered eligible 1) Study design: observational and interventional trials including randomized controlled trial, cohort study, case-control study or cross-sectional study; 2) Population; no restrictions; 3) Intervention (exposure): transfusion of plasma-containing components (preferably FFP, but cryosupernatant cannot be excluded) from male-only, predominantly-male only or never pregnant HLA-negative female donors versus transfusion of plasma-containing components from unisexual donors. ("control plasma"); 4) Outcome, setting and timeframe: the primary outcome measure was the effect of the intervention of TRALI preventive strategies for transfusion on the incidence of TRALI. The secondary outcome measure was the effect of the intervention of TRALI preventive strategies for transfusion on all-cause short-term (30-day) mortality among patients of TRALI.

Genotyping of GSTM1 polymorphism

The following PCR protocol is designed for use with Optimase, the high-fidelity polymerase product from Transgenomic.

Forward primer sequence: GAACTCCCTGAAAAGCTAAAGC (T_m = 55.1°C) Reverse primer sequence: GTTGGGCTCAAATATACGGTGG (T_m = 56.9°C) PCR product length: 219 bp

Protocol type: Simple 3-step PCR protocol Step 1: 95°C, 2 min.

Step 2: 95°C, 30 sec.

Step3:59.0°C, 30 sec.

Step4:72°C, 30.0 sec.

Step 5: Repeat steps 2-4 35 more times

Step 6: 72°C, 5 min.

Master mix (Maxime TM premix kit (i-Taq) lot number 302321651. (Table 2).

For Genotyping of GSTT1 polymorphism

The following PCR protocol is designed for use with Optimase, the high-fidelity polymerase product from Transgenomic.

Forward primer sequence: TTCCTTACTGGTCCTCACATCTC
Reverse primer sequence: TCACCGGATCATGGCCAGCA
PCR product length: 480 bp

Protocol type: Simple 3-step PCR protocol Step 1: 95°C, 2 min.

Step 2: 95°C, 30 sec.

Step 3: 60.8°C, 30 sec.

Step 4: 72°C, 50.0 sec.

Step 5: Repeat steps 2-4 30 more times

Step 6: 72°C, 5 min.

PCR (Polymerase chain reaction)

Master mix (Maxime TM premix kit (i-Taq) lot number 302321651 (Table 3).

The product obtained from each reaction was subjected to electrophoresis on a 2% agarose gel in an electric field of 10 V/cm, stained with 5 µg/mL ethidium bromide, and visualized and recorded with the aid of a video documentation system (Image Master VDS®, Amersham Pharmacia Biotech).

GSTM1 and GSTT1 genotypes were determined by the presence and absence (null) of bands of 157 and 480 bp, respectively, with an internal control of 268 bp (Figure 1 and Figure 2).

For Genotyping of GSTP1 polymorphism

GSTP1 (Ile105Val) polymorphism was determined with a polymerase chain reaction- restriction fragment length polymorphism assay [PCR-RFLP].

The PCR primers were: 5'-ACC CCA GGG CTC TAT GGG AA-3' (F) and 5'-TGA

GGG CAC AAG AAG CCC CT-3' (R). PCR was carried out in a total volume of 20 µl. It consists 2 µl genomic DNA, 1 µl each primer, ready to load master mix (Maxime TM premix kit (i-Taq) and 16 µl distilled water. PCR condition includes initial denaturation at 95°C for 2 minutes, followed by 30 cycles at 95°C for 30 second, 61.3°C for 30 second, 72°C for 20 second and a last extension at 72°C for 5 minutes. PCR products were analyzed on a 2% Agarose gel stained with 0.3 µg/mL ethidium bromide, and visualized by gel documentation system (to check the presence of 176 pb of GSTP1) Figure 3.

Then the PCR product was digested with the restriction endonuclease Alw261 (BsmAI) restriction enzyme (thermoscientific Alw261 (BsmA1) Lot Number 00743699) as follow: For each 7 µl of PCR product, 1 µl from 10X NEB buffer and 0.5 µl from Alw261 restriction enzyme were added, then incubated at 37°C for 20 hrs, followed by incubation at 65°C for 20 minutes to inhibit the enzyme activity. The products are then resolved on 2% agarose gel electrophoresis containing ethidium bromide, then visualized using UV trans illuminator. The amplified fragment after digestion with Alw261 restriction enzyme, will give rise to: 2 fragments at 176 bp and 85 bp indicating the presence of wild type (Ile/Ile), appearance of 2 fragments at 91 bp and 85 bp indicates the presence of homozygous mutant type (Val/Val), while presence of 3 fragments at 176 bp, 91 bp and 85 bp indicates the presence of heterozygous mutant type (Ile/Val). For quality control, genotyping of the samples was repeated blindly and were identical to the initial results (Figure 4).

Statistical analysis

Data were transferred to the Statistical Package for the Social Sciences (SPSS) Software program, version 23 to be statistically

Table 2. PCR protocol for GSTM1

PCR Reaction	Volume
Water for injection	16 µl
Primer F	1 µl
Primer R	1 µl
DNA	2 µl
Total	20 µl

Table 3. Observational data of included studies reporting total transfused/distributed units and TRALI cases before and after intervention

PCR Reaction	Volume
Water for injection	16 µl
Primer F	1 µl
Primer R	1 µl
DNA	2 µl
Total	20 µl

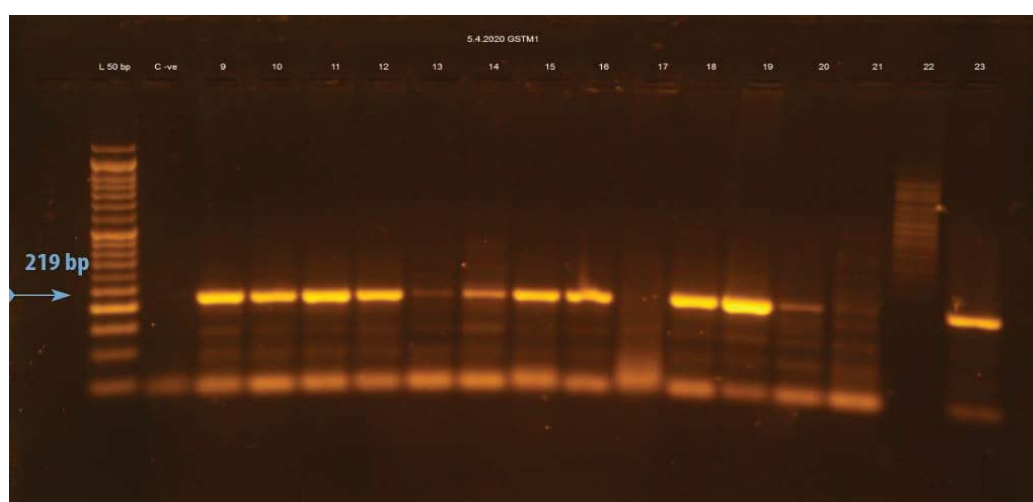


Figure 1. Agarose gel electrophoresis for amplified PCR products of GSTM1(219bp) and B-globin (268 bpb) fragments.

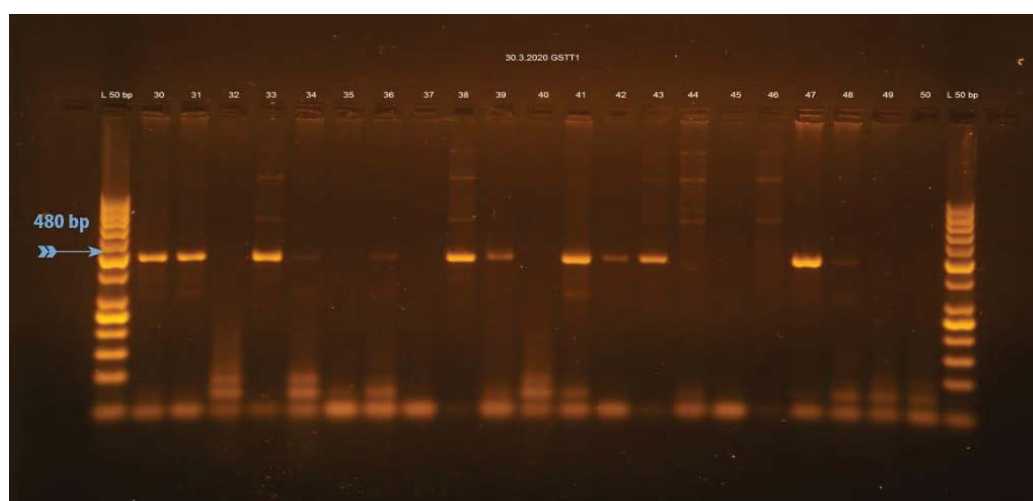


Figure 2. Agarose gel electrophoresis for amplified PCR products of GSTT1 (480 bp) and B-globin (268 bpb) fragments.

analyzed. Data were summarized using range, mean, and standard deviation and median for continuous variables and frequency and percentage for discrete ones. Comparison of continuous variables was performed using either independent sample t-tests or Mann-Whitney tests, while the comparison of discrete variables was conducted through chi square. P values less than 0.05 were considered statistically significant, and less than 0.01 were considered highly significant.

Ethical consideration

Approval was received from ministry of health in Khartoum/ Sudan and Jafar Ibn Auf Pediatric Hospital

RESULTS

The obtained data are presented as frequencies, percentage, mean and standard deviation. A one-way ANOVA was performed to

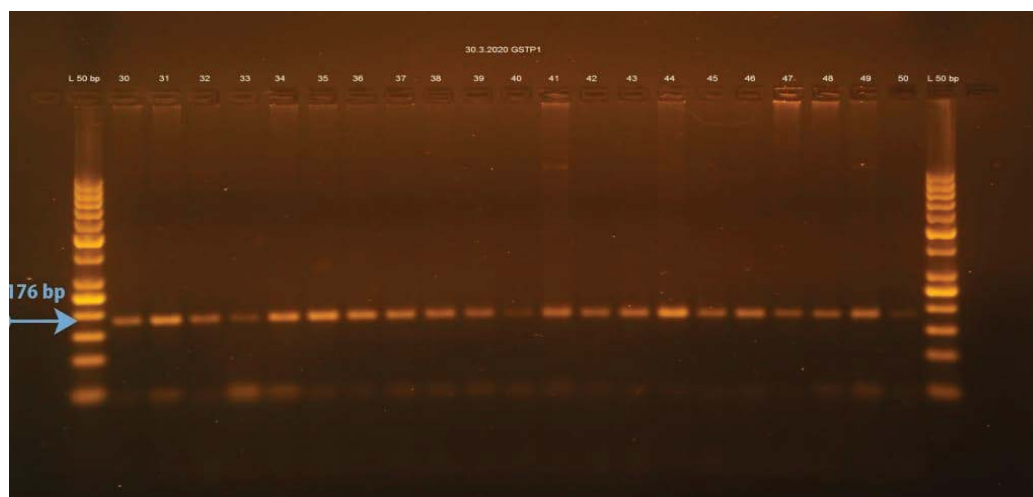


Figure 3. Agarose gel electrophoresis for amplified PCR products of GSTP1 (176 bp) and B-globin (268 bpb) fragments



Figure 4. Lane DNA ladder: MW 100-1500 bp fragments, lane fragments at 176 bp and 85 bp indicates the presence of wild type (Ile/Ile), lane fragments at at 176 bp, 91 bp and 85 bp indicates the presence of heterozygous mutant type (Ile/Val). Lane fragments at 91 bp and 85 bp indicates the presence of mutant type (Val/Val)

identify the significance between variables and the P-value of 0.05 was used.

The total subjects of the confirmed diagnosis were 126 and 126 control. All the recruited subjects to the hospital were diagnosed with homozygous sickle cell disease. The mean age of the study subjects was (8.0) years old; the minimum age was 10 months and the maximum one was 14.5 years. Among these cases of SCA 78 (61.9%) are males and 48 (38.1%) are female, and for control 80 (63.5%) are male and 46 (36.5%) are female (Table 4).

GSTM1, GSTT1 and GSTP1 genotypes in Sickle cell anemia patients and controls

The frequency of individuals carrying the GSTM1 in patients and controls were 44% and 21.7% respectively.

The GSTM1 null genotype frequency was found to be slightly lower in the control group, (30.2% as opposed to 33.3% in SCA patients), but this difference was not considered to be statistically significant (OR = 1.16, 95% CI: 0.68-1.97; p-value = 0.5884).

GSTT1 was found in 47.6% of SCA patients and 77.8% of the Control but the frequency of individuals carrying the GSTT1 null genotype was significantly higher among SCA patients, 52.4% compared to 22.2% of the Control; (OR = 3.85, 95% CI: 2.23-6.65; p-value = 0.0001).

The distribution of the GSTP1, GSTM1 and GSTT1 genotypes in SCA patients and controls are shown in (Table 5). The homozygous (Val/Val) of GSTP1, the heterozygous (Ile/Val) and the wild genotype of GSTP1 (Ile/Ile) forms were found in 9.7%, 35.5% and 54.8% of SCA cases, respectively.

In the Control, the homozygous (Val/Val) of GSTP1 Ile105Val, heterozygous (Ile/Val) and the wild genotype of GSTP1 (Ile/Ile) forms were 1.6%, 39.7% and 58.7%, respectively.

The homozygous mutant type (Val/Val) showed significant difference between patients and controls (OR= 6.53, 95% CI: 1.41-30.24; P-value = 0.0164) (Table 5).

The combined effects of GSTM1 and GSTT1 genotypes in SCA risk were also conducted. Individuals with a combined GSTM1 null/GSTT1 null genotype had an estimated 11.7-fold increased risk of SCA over individuals with a GSTM1 present /GSTT1 present genotype (OR=11.7; CI=2.67-51.2; p-value=0.0011).

The GSTM1 present /GSTT1 null genotype had an estimated 2.01-fold increased risk to over individuals with a GSTM1 present /GSTT1 present genotype (OR=2.01; CI=1.16-3.51; p-value=0.0135). in contrast, GSTM1 null/ GSTT1 present genotypes were not associated with a SCA risk (p-value= 0.071) (Table 6).

Table 4. Frequency of gender and age among (study population)

Gender	Mean	N	Std. Deviation	Minimum	Maximum	percent
Male	7.5051	78	4.15573	0.8	14.5	61.9
Female	8.8125	48	3.98201	0.1	14	38.1
Total	8.0032	126	4.12392	0.1	14.5	100

Table 5. Distribution of GSTM1, GSTT1 and GSTP1 Genotypes in SCA Patients and Control

Genotypes/ Allele frequency		SCA N (%)	Control N (%)	OR	95%CI	P- value
GSTM1	Present	84 (66.7)	88(69.8)	Reference	0.68-1.97	0.5884
	Null	42 (33.3)	38(30.2)	1.16		
GSTT1	Present	60 (47.6)	98(77.8)	Reference	2.23-6.65	0.0001
	Null	66 (52.4)	28(22.2)	3.85		
GSTP1	AA	68 (54.8)	74 (58.7)	Reference		
	AG	44 (35.5)	50 (39.7)	0.96	0.57-1.61	0.971
	GG	12 (9.7)	2 (1.6)	6.53	1.41-30.24	0.0164

N, total number; OR, odd ratio; CI, confidence interval; Statistical significance (P- value) is 0.05

Table 6. Combination Effect of GSTM1 and GSTT1 Genotypes on SCA Risk.

Genotypes		SCA N (%)	Control N (%)	OR	95%CI	P- value
GSTM1	GSTT1					
Present	Present	38 (30.2)	62 (49.2)	Reference		
Present	Null	46 (36.5)	28 (22.2)	2.01	1.16-3.51	0.0135
Null	Present	22 (17.5)	34 (27)	0.572	0.31-1.05	0.071
Null	Null	20 (15.8)	2 (1.6)	11.7	2.67-51.2	0.0011

DISCUSSION

SCD is an inherited disorder that has as its cardinal features chronic hemolytic anemia and vaso-occlusion [16].

The clinical features of the disease ultimately result from mutated sickle cell hemoglobin (Hb S) within the red blood cells. Deoxygenation can induce a sickle-like deformation of the Hb S, in turn leading to microvascular occlusion [17].

Oxidative stress might play an important role in the pathophysiology of SCD, where impairment of reductive defense mechanisms could potentiate clinical manifestations of SCD [18].

In the reduced form, glutathione is the most important intracellular antioxidant scavenger, where it can act as a functional antagonist to the pro-inflammatory signaling evoked by hydrogen peroxide [19].

Previous studies have revealed a significant impairment of the glutathione system in SCA, as reflected by a reduction of total GSH, which is believed to underlie the effect of increased oxidative stress, resulting from HbS in stability, deoxygenation, denaturation, and precipitation. Furthermore, the higher free iron concentrations resulting from increased hemolysis might potentiate the clinical manifestations of SCD by magnifying the pro-oxidant burden [20].

The frequencies of GSTs polymorphic alleles especially GSTM1 and GSTT1 and GSTP1 have been reported in other anemia and there are several studies have been published on the relationship between GSTM1 polymorphism and various types of anemia. there are published reports about the association between GSTM1 and GSTT1null and GSTP1 polymorphism and Sickle cell anemia so this study will fill the gap regarding this polymorphism and its association With Sickle cell anemia in Sudanese patients.

In our study, we have observed the highest frequency distribution of GST null genotypes among SCD patients for GSTT1 (52.4%)

followed by GSTM1 (33.3%) then combined GSTM1/T1 genotype (15.8%).

Wild-type GSTP1 (59%) was the commonest variant followed by the heterozygous (35%) and then homozygous (6%) polymorphism. There was statistically significant difference in the distribution of the three GSTs gene polymorphisms between SCD patients and controls.

Similar to our observation, a study by Aly RABAB and M. Hasaneen Bothina, in Egypt [21] in 37 Egyptian SCD patients concluded that there was no statistically significant difference in the prevalence of the combined GSTM1/T1 null genotype among Egyptian SCD patients compared to a control group.

like our results, the highest frequency of GST null genotypes was for GSTT1 (64.9%), which was statistically significantly higher when compared to the control group (42.5%), followed by the GSTM1 (37.8%) null genotype. In a Brazilian study involving 278 SCD patients by de Oliveira Filho et al., [22] GST null genotype distribution was not similar to our finding, with the highest frequency for the GSTM1 genotype (27.3%), followed by the GSTT1 null genotype (14.7%) and then the combined GSTM1/T1 null genotypes (11.1%).

However, unlike our finding, Anther study done in Egypt [23] by Hend N. Ellithy et.al in 100 Egyptian patients Observed the highest frequency distribution of GST null genotypes among SCD patients for GSTM1 (42%) followed by GSTT1 (32%) then combined GSTM1/T1 genotype (16%).

Wild-type GSTP1 (59%) was the commonest variant followed by the heterozygous (35%) and then homozygous (6%) polymorphism. There was no statistically significant difference in the distribution of the three GSTs gene polymorphisms between SCD patients and controls.

Also like our finding, in another Brazilian compromising 76 Brazilian individuals, of whom [22], had SCA, Silva et al. [24] found lower frequency of the GSTM1 null genotype in these patients, but the frequency of the GSTT1 null (50%) and both GSTM1 and GSTT1 null (17.9%) genotypes were higher.

Also like our finding in other study by Faisel Abu-Duhier and Rashid Mir among the population of Tabuk, Saudi Arabia [25], there was a statistically significant difference between the frequency of GSTT1 null genotype among patients with SCD ($P = 0.00001$). It was observed that patients with SCD possess higher frequency of GSTT1 null genotype 26% than healthy controls (7.5%). However, only 10% of GSTM1 null genotype frequency was observed among patients compared to 16.5% of GSTM1 null genotype frequency among healthy controls ($P = 0.129$). While analyzing both the genotypes together, patients revealed significantly higher number of either GSTM1/GSTT1 null genotypes (34%) than healthy controls (24%).

Also like our finding in other study in India [26], by Pandey Sanjay et.al. they showed the frequencies of GSTM1 (5%), GSTT1 (14%) and GSTT1/M1 (9%) were higher in patients than in controls where the GSTM1 frequency was 3%, GSTT1 was 5% and GSTT1/M1 frequency was 2%. The difference between groups for the GSTT1 null genotype was statistically significant (p -value = 0.05) while the differences between groups for the GSTM1 and GSTT1/M1 null genotypes were not (p -value > 0.05).

In contrast to all studies, Hala Fathy Shiba et. al. in Egypt [27], they found no statistically significant difference could be detected between patients and controls regarding prevalence of GSTM1, GSTT1, and GSTP1 genotypes ($P = 0.153$, 0.469, and 0.110, respectively). The GSTM1 null genotype was the most prevalent genotype among controls as well as sickle cell patients (68% and 52%, respectively), followed by the mutant GSTP1 genotype (46% and 44%, respectively) and then the GSTT1 null genotype (18% and 26%, respectively).

Although most of studies like our finding, but the difference in the prevalence of GST polymorphisms within the same population may need more extensive studies which sample a larger number of SCD patients, as any reported differences between studies might be attributed to sampling error.

CONCLUSION

In this study, the GSTM1 null genotype frequency was found to be slightly higher in SCA patients, the GSTT1 null genotype and combined GSTM1 null/GSTT1 null genotype and GSTP1 homozygous mutant type (Val/Val) had increased risk of SCA.

ACKNOWLEDGEMENTS

The authors would like to thank all the people for their assist and directing in preparation this research, the most thankful for my supervisors Dr. Ozaz Yagoup Mohammed Ahmed and professor/Huda Mohammed Haroun and Dr. Muzamil Mahdi Abdel Hamid and the patients and controls enrolled in this study.

CONFLICT OF INTEREST

The authors declare that they have no conflict of interest.

REFERENCES

- Odièvre MH, Verger E, Silva-Pinto AC, Elion J. Pathophysiological insights in sickle cell disease. *Indian J Med Res.* 2011;134:532.
- Aygun B, Odame I. A global perspective on sickle cell disease. *Pediatr Blood Cancer.* 2012;59:386-390.

- Makani J, Cox SE, Soka D, Komba AN, Oruo J, Mwamtemi H, et al. Mortality in sickle cell anemia in Africa: a prospective cohort study in Tanzania. *PloS one.* 2011;6:e14699.
- Ohene-Frempong K, Bonney A, Tetteh H, Nkrumah FK. 270 Newborn Screening for Sickle Cell Disease in Ghana. *Pediatr Res.* 2005;58:401.
- Kauf TL, Coates TD, Huazhi L, Mody-Patel N, Hartzema AG. The cost of health care for children and adults with sickle cell disease. *Am J Hematol.* 2009;84:323-327.
- Amer J, Ghoti H, Rachmilewitz E, Koren A, Levin C, Fibach E. Red blood cells, platelets and polymorphonuclear neutrophils of patients with sickle cell disease exhibit oxidative stress that can be ameliorated by antioxidants. *Br J Haematol.* 2006;132:108-113.
- Hayes JD, Strange RC. Glutathione S-transferase polymorphisms and their biological consequences. *Pharmacology.* 2000;61:154-166.
- Hayes JD, Flanagan JU, Jowsey IR. Glutathione transferases. *Annu Rev Pharmacol Toxicol.* 2005;45:51-88.
- Hayes JD, Pulford DJ. The glutathione S-transferase supergene family: regulation of GST and the contribution of the isoenzymes to cancer chemoprotection and drug resistance part I. *Crit Rev Biochem Mol Biol.* 1995;30:445-520.
- Rinaldi R, Eliasson E, Swedmark S, Morgenstern R. Reactive intermediates and the dynamics of glutathione transferases. *Drug Metab Dispos.* 2002;30:1053-1058.
- Strange RC, Spiteri MA, Ramachandran S, Fryer AA. Glutathione-S-transferase family of enzymes. *Mutat Res-Fund Mol Mech.* 2001;482:21-26.
- Sharma V, Kumar B, Saxena R. Glutathione S-transferase gene deletions and their effect on iron status in HbE/ α thalassemia patients. *Ann Hematol.* 2010;89:411-414.
- Wahner AD, Glatt CE, Bronstein JM, Ritz B. Glutathione S-transferase mu, omega, pi, and theta class variants and smoking in Parkinson's disease. *Neurosci Lett.* 2007;413:274-278.
- Jones BA, Christensen AR, Wise Sr JP, Yu H. Glutathione S-transferase polymorphisms and survival in African-American and white colorectal cancer patients. *Cancer Epidemiol.* 2009;33:249-256.
- Mohammadzadeh GS, Moghadam SN, Rasaee MJ, Zaree AB, Mahmoodzadeh H, Allameh A. Measurement of glutathione S-transferase and its class- π in plasma and tissue biopsies obtained after laparoscopy and endoscopy from subjects with esophagus and gastric cancer. *Clin Biochem.* 2003;36:283-288.
- Rees DC, Williams TN, Gladwin MT. Sickle-cell disease. *The Lancet.* 2010;376:2018-2031.
- Embury SH, Hebbel RP, Steinberg MH, Mohandas N. Pathogenesis of vasoocclusion. Sickle cell disease: basic principl clin pract. 1994;21:311-326.
- McCarty MF. Potential utility of full-spectrum antioxidant therapy, citrulline, and dietary nitrate in the management of sickle cell disease. *Med Hypotheses* 2010;74:1055-1058.
- Gizi A, Papassotiropoulos I, Apostolou F, Lazaropoulou C, Papastamatakis M, Kanavaki I, et al. Assessment of oxidative stress in patients with sickle cell disease: The glutathione system and the oxidant-antioxidant status. *Blood Cells Mol Dis.* 2011;46:220-225.
- Lachant NA, Davidson WD, Tanaka KR. Impaired pentose phosphate shunt function in sickle cell disease: a potential mechanism for increased Heinz body formation and membrane lipid peroxidation. *Am J Hematol.* 1983;15:1-3.
- Rabab MA, Bothina MH. GSTM1 and GSTT1 polymorphism in Egyptian sickle cell anemia patients. *Int J Hematol Oncol Stem Cell Res.* 2013;29:269-275.

22. de Oliveira Filho RA, Silva GJ, de Farias Domingos I, Hatzlhofer BL, da Silva Araújo A, et al. Association between the genetic polymorphisms of glutathione S-transferase (GSTM1 and GSTT1) and the clinical manifestations in sickle cell anemia. *Blood Cells Mol Dis.* 2013;51:76-79.
23. Ellithy HN, Yousri S, Shahin GH. Relation between glutathione S-transferase genes (GSTM1, GSTT1, and GSTP1) polymorphisms and clinical manifestations of sickle cell disease in Egyptian patients. *Hematol.* 2015;20:598-606.
24. Silva DG, Junior EB, de Souza Torres L, Júnior OR, de Castro Lobo C, Bonini-Domingos CR, et al. Relationship between oxidative stress, glutathione S-transferase polymorphisms and hydroxyurea treatment in sickle cell anemia. *Blood Cells Mol Dis.* 2011;47:23-28.
25. Abu-Duhier F, Mir R. GSTT1 (rs4025935) null genotype is associated with increased risk of sickle cell disease in the populations of Tabuk–Northwestern region of Saudi Arabia. *Hematol.* 2017;22:172-177.
26. Sanjay P, Mani MR, Sweta P, Vineet S, Kumar AR, Renu S. Prevalence of glutathione S-transferase gene deletions and their effect on sickle cell patients. *Rev Bras Hematol Hemoter.* 2012;34:100-102.
27. Shiba HF, El-Ghamrawy MK, Shaheen IA, Ali RA, Mousa SM. Glutathione S-transferase gene polymorphisms (GSTM1, GSTT1, and GSTP1) in Egyptian pediatric patients with sickle cell disease. *Pediatr Dev Pathol.* 2014;17:265-270.