

## Phytotoxicity of Metal Oxide Nanoparticles is Related to Both Dissolved Metals Ions and Adsorption of Particles on Seed Surfaces

Stephen G. Wu<sup>1</sup>, Li Huang<sup>1</sup>, Jennifer Head<sup>1</sup>, Da-Ren Chen<sup>1</sup>, In-Chul Kong<sup>2\*</sup> and Yinjie J. Tang<sup>1\*</sup>

<sup>1</sup>Department of Energy, Environmental and Chemical Engineering, Washington University, St. Louis, Missouri 63130, USA

<sup>2</sup>Department of Environmental Engineering, Yeungnam University, Kyungsan City, Kyungbuk 712-749, Republic of Korea

### Abstract

This study assesses the biological effects of nanoparticles (NPs) based on seed germination and root elongation tests. Lettuce, radish and cucumber seeds were incubated with various metal oxide NPs (CuO, NiO, TiO<sub>2</sub>, Fe<sub>2</sub>O<sub>3</sub>, Co<sub>3</sub>O<sub>4</sub>), of which only CuO and NiO showed deleterious impacts on the activities of all three seeds. The measured EC<sub>50</sub> for seed germinations were: lettuce seed (NiO: 28 mg/L; CuO: 13 mg/L), radish seed (NiO: 401 mg/L; CuO: 398 mg/L), and cucumber seed (NiO: 175 mg/L; CuO: 228 mg/L). Phytotoxicity of TiO<sub>2</sub>, Fe<sub>2</sub>O<sub>3</sub> and Co<sub>3</sub>O<sub>4</sub> to the tested seeds was not significant, while Co<sub>3</sub>O<sub>4</sub> NP solution (5 g/L) was shown to improve root elongation of radish seedling. Metal oxide NPs tended to adsorb on seed surfaces in the aqueous medium and released metal ions near the seeds. Therefore, metal oxide NPs had higher phytotoxicity than free metal ions of the equivalent concentrations. Further, the surface area-to-volume ratio of seeds may also affect NPs phytotoxicity, whereby small seeds (i.e., lettuce) were the most sensitive to CuO and NiO NPs in our experiments.

**Keywords:** CuO; EC<sub>50</sub>; Metal ions; NiO; Root elongation; Seed germination

### Introduction

As applications for metal oxide nanoparticles (NPs) are employed by industry, the release of nanomaterials into the environment may pose severe threats for ecological systems and human health [1-4]. Risk assessments of nano-toxicities have already attracted public attention [1]. Toxic effects of NPs on microorganisms and animals have also been reported [4-10], where metal oxide nanoparticles are the most extensively studied. Their toxicities are attributed to three mechanisms: 1. Generation of reactive oxygen species (ROS), which can damage the cell membrane; 2. Penetration of nanoparticles into the cell where they interfere with intracellular metabolism (a nano-Trojan-horse type mechanism) [11]; 3. Release of metal ions that hinder enzyme functions. Moreover, the phytotoxicity profile of NPs has also been investigated by researchers via seed germination and root elongation tests which evaluate the acute effects of NPs on plant physiologies [12]. For instance, alumina and zinc oxide NPs have been applied to different plant species [13,14]. Inhibition of seed germination and root elongation has been found to be highly dependent on both plant type and NP properties. This paper explores the impacts of additional metal oxide NPs on seed activities. In particular, we investigate three common vegetable seeds after they were incubated in aqueous NP-containing solutions: lettuce (*Lactuca sativa*) seed (length/width: 3 mm/1 mm); radish (*Raphanus sativus*) seed (length/width: 3 mm/3 mm) and cucumber (*Cucumis sativus*) seed (length/width: 8 mm/6 mm). This work aims to increase understanding of both NPs phytotoxicity on various edible plants and the potential impact of NPs on agricultural processes [15,16].

### Materials and Methods

#### Chemicals

All chemicals used were reagent grade and purchased from Sigma (St. Louis, MO, US) or Fisher (Pittsburg, PA, US). TiO<sub>2</sub> NPs (30-50 nm), Fe<sub>2</sub>O<sub>3</sub> NPs (20-40 nm), CuO NPs (30-50 nm), NiO NPs (30 nm) and Co<sub>3</sub>O<sub>4</sub> NPs (10-30 nm) were obtained from Nanostructured &

Amorphous Materials, Inc. (Houston, TX, US). The pH of germination solutions (containing deionized water and NP suspensions) was adjusted to 7 for all toxicity studies done in aqueous phases.

#### Seed germination and root elongation assay

All seeds in this study were purchased from Ferry-Morse Seed Co. (Fulton, KY, US): Lettuce (Black Seeded Simpson, 2846); Radish (Icicle Short Top, 3236); Cucumber (Marketmore 76, 2646). All three species are commonly used for phytotoxicity tests [17-19]. Seeds were first sterilized by soaking them in 3% H<sub>2</sub>O<sub>2</sub> solution for 1 min and then rinsing twice with deionized water (dH<sub>2</sub>O). Then seeds were placed in dH<sub>2</sub>O (control) or certain NP solutions and shaken gently for two-hours [13]. All seeds were subsequently transferred into 15 mm × 100 mm Petri dishes containing one piece of filter paper (90 mm in diameter, Whatman No.1). 10 seeds of radish and cucumber or 15 seeds of lettuce were evenly spaced on top of the filter paper in each Petri dish. The dishes were filled with 5 ml of dH<sub>2</sub>O or NP solutions and sealed by parafilm tape before being incubated at 25°C in dark conditions [20,21]. After 3 days of incubation, the root length of each seedling was measured. Experimental procedures are summarized in Figure 1. Root length greater than 1 cm for lettuce seeding and 2 cm for

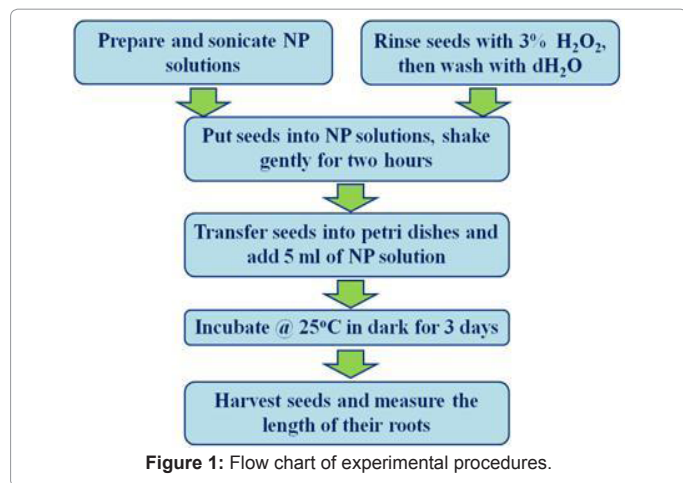
**\*Corresponding author:** Yinjie J Tang, Assistant Professor, Department of Energy, Environmental and Chemical Engineering, Washington University, St. Louis, Missouri 63130, USA, Tel: 1-314-935-3441; Fax: 1-314-935-5464; E-mail: [yinjie.tang@seas.wustl.edu](mailto:yinjie.tang@seas.wustl.edu)

In-chul Kong, Professor, Department of Environmental Engineering, Yeungnam University, Kyungsan City, Kyungbuk 712-749, Republic of Korea, Tel: 82-53-810-2546; Fax: 82-53-810-4624; E-mail: [ickong@ynu.ac.kr](mailto:ickong@ynu.ac.kr)

Received May 26, 2012; Accepted July 17, 2012; Published July 20, 2012

**Citation:** Wu SG, Huang L, Head J, Chen DR, Kong IC, et al. (2012) Phytotoxicity of Metal Oxide Nanoparticles is Related to Both Dissolved Metals Ions and Adsorption of Particles on Seed Surfaces. J Pet Environ Biotechnol 3:126. doi:10.4172/2157-7463.1000126

**Copyright:** © 2012 Tang YJ, et al. This is an open-access article distributed under the terms of the Creative Commons Attribution License, which permits unrestricted use, distribution, and reproduction in any medium, provided the original author and source are credited.



radish and cucumber seeding was considered positive for germination. For each condition, experiments were conducted in triplicate, from which standard deviations were calculated.

### Data analysis

Three parameters were adopted in this analysis to evaluate the conditions of seed germination: Relative germination rate, Germination Index and EC<sub>50</sub> value. They were calculated based on the following equations according to previous reports [22,23]:

$$\text{Relative germination rate} = \frac{\text{Seeds germinated in test sample}}{\text{Seeds germinated in control}} \times 100$$

$$\text{Relative root elongation} = \frac{\text{Mean root length in test sample}}{\text{Mean root length in control}} \times 100$$

$$\text{Germination Index} = \frac{\text{Relative germination rate} \times \text{Relative root elongation}}{100}$$

EC<sub>50</sub> is the effective concentration of a drug/chemical that reaches

half of its maximal effects. We employed the USEPA software to analyze the phytotoxicity data (<http://www.epa.gov/eerd/stat2.htm#tsk>) [19], which calculates EC<sub>50</sub> values using the Trimmed Spearman-Kärber Method [24]. Student's t-test was performed to determine the variations in root length and germination rate between different treatment and control group. Statistics Toolbox of Matlab (MathWorks, MA, US) was employed to conduct all statistical analyses, and statistically significant was defined at the level of P < 0.05.

### Determination of metal ions released from NP suspensions

To measure the concentration of metal ions released from NP solutions, aliquots of all five NP suspensions were drawn after the suspensions were incubated at room temperature for 2 hours. The extracts were centrifuged at 19,000 g for 20 min, and supernatants were collected and filtered with 0.22 μm nylon filters (GE Water & Process Technologies, CT, US). Inductively coupled plasma mass spectroscopy (ICP-MS, Agilent, CA, US) was used to conduct concentration assays of metal ions, and duplicated samples were measured for each condition.

### Protocols for scanning electron microscope (SEM) and dynamic lighting scattering (DLS)

Seeds sprayed with NPs or incubated with NP suspensions were dried overnight in a fume hood. They were then coated with gold by a low vacuum sputter coater (SPI supplies, PA, US) prior to image taking. Images of seed surfaces were taken with a scanning electron microscope (SEM) (Nova 2300 FEI, OR, US). Zeta potential of NP suspensions (the electric potential difference between the culture medium and the interfacial layer of fluid attached to the NPs) was determined by dynamic lighting scattering (Malvern Instruments, Worcestershire, UK) after 30 minutes of incubation in room temperature.

### Results and Discussion

The toxicities of different metal oxide NPs at various concentrations on lettuce, radish, and cucumber seeds were tested. Seeds incubated in dH<sub>2</sub>O (pH=7) were considered as the control upon which all statistical analysis was performed. From results shown in Table 1 and Figure 2, CuO and NiO NPs were far more toxic than the other tested NPs on

NP	Lettuce		Radish		Cucumber	
	EC <sub>50</sub> (mg/L)	GI affected by 1000 mg/L NP	EC <sub>50</sub> (mg/L)	GI affected by 1000 mg/L NP	EC <sub>50</sub> (mg/L)	GI affected by 1000 mg/L NP
CuO	12.9	-100%*	397.6	-100%*	175.4	-100%*
NiO	27.9	-100%*	400.7	-100%*	228.2	-100%*
Fe <sub>2</sub> O <sub>3</sub>	>5000	-55.0%*	>5000	-38.4%	1682	-68.4%*
TiO <sub>2</sub>	>5000	-36.2%	>5000	-47.6%*	>5000	-10.2%
Co <sub>3</sub> O <sub>4</sub>	>5000	-43.6%	>5000	+13.7%	>5000	-20.7%

GI – Germination Index; '+' - enhancement, '-' – inhibition, '\*' – significant difference

**Table 1:** Effects of NPs on seeds activities.

Seeds	Lettuce		Radish	Cucumber
	Cu <sup>2+</sup>	Ni <sup>2+</sup>		
EC <sub>50</sub> for ions (mg/L) *	4.9 [3.9, 6.0]	8.8 [6.5, 11.9]	8.0 [5.8, 11.0]	4.8 [3.5, 6.6]
Released ions in solution from CuO and NiO NPs (mg/L) **	Cu <sup>2+</sup>	0.20 ± 0.16 (13)	1.75 ± 0.45 (400)	0.47 ± 0.28 (230)
	Ni <sup>2+</sup>	0.26 ± 0.19 (28)	1.97 ± 0.64 (400)	1.32 ± 0.11 (175)

\* Values of 95% confidence interval of free metal ions are in brackets [].

\*\* Concentrations of released metal ions from NP solutions incubated with different seeds: NPs in the experiments were at the concentrations of their approximate respective EC<sub>50</sub> values (in parentheses). Data were averaged based on duplicated samples

**Table 2:** EC<sub>50</sub> values of Cu<sup>2+</sup>/Ni<sup>2+</sup> vs. released ions from NPs at their EC<sub>50</sub> concentration.

all three species of seeds, while lettuce seeds were the most sensitive to NPs in terms of germination. Our results showed that the toxicities of the NPs were also dependent upon the plant species, which was in accordance with a previous report [13]. The relative toxicities based on the germination index (combined seed germination and root elongation) for the tested NPs were listed below:

Lettuce: CuO > NiO >> Fe<sub>2</sub>O<sub>3</sub>, TiO<sub>2</sub>, Co<sub>3</sub>O<sub>4</sub>

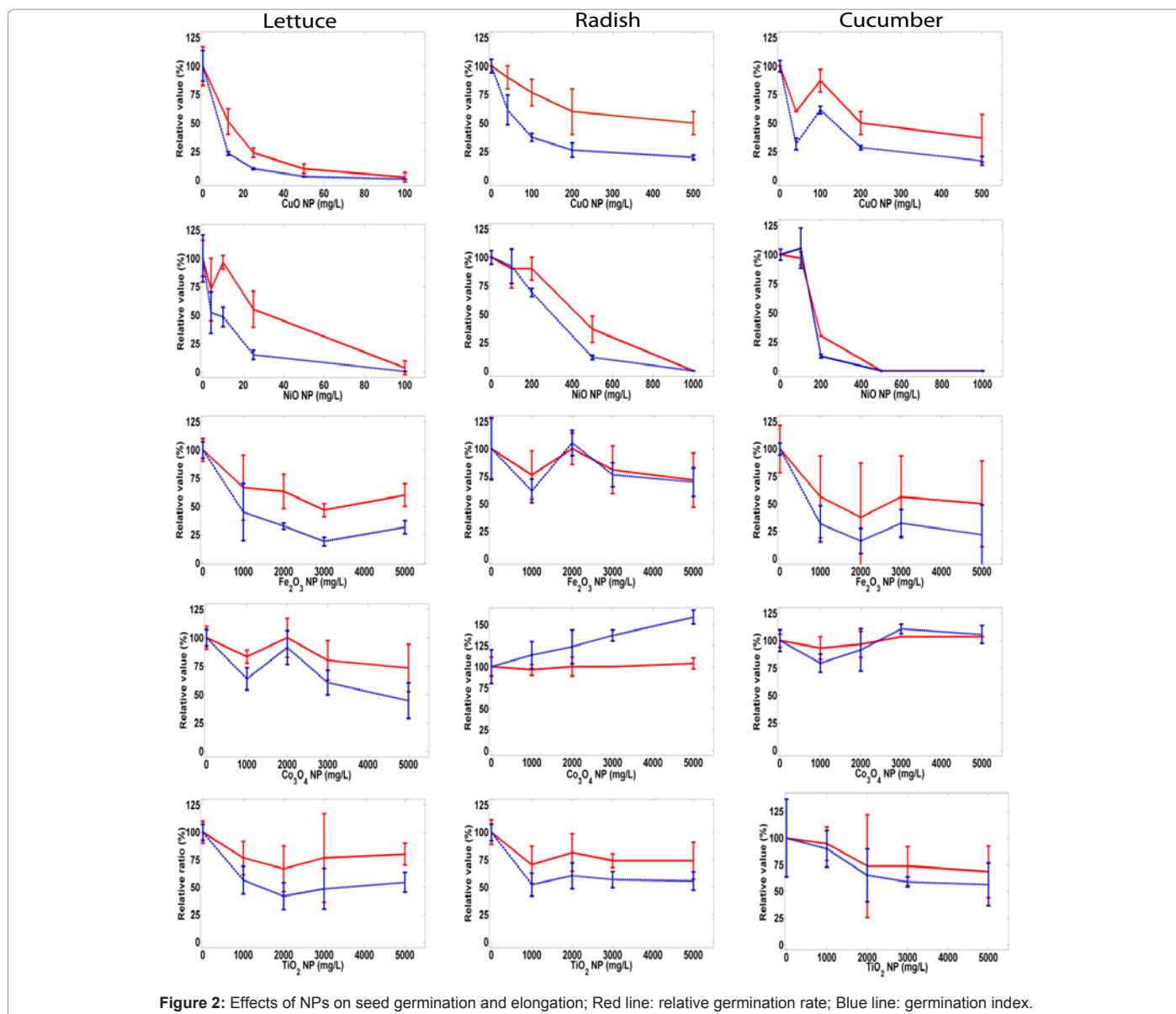
Radish: NiO ≈ CuO >> Fe<sub>2</sub>O<sub>3</sub>, TiO<sub>2</sub> > Co<sub>3</sub>O<sub>4</sub>

Cucumber: NiO > CuO >> Fe<sub>2</sub>O<sub>3</sub>, TiO<sub>2</sub>, Co<sub>3</sub>O<sub>4</sub>

The measured EC<sub>50</sub> in this study were: lettuce seed (NiO: 28 mg/L; CuO: 13 mg/L), radish seed (NiO: 401 mg/L; CuO: 398 mg/L), and cucumber seed (NiO: 175 mg/L; CuO: 228 mg/L). Interestingly, Co<sub>3</sub>O<sub>4</sub> NP solution did not inhibit the germination of cucumber seeds and even improved root elongation of radish seedling at high concentrations (5 g/L). Previous studies have provided similar reports of the positive

effects of NPs on germination and growth of plants. For example, TiO<sub>2</sub> and SiO<sub>2</sub> NPs were found to enhance both the germination and growth of *Glycine max* seeds [25], carbon nanotubes (CNT) were discovered to improve germination and root elongation of tomato seeds [26], and Nano-Al were shown to augment root elongation of radish and rape seedling [13]. Such observations are likely due to an increased water uptake by seeds in the presence of high concentrations of NPs [27].

The biological effects of NPs in aqueous solutions are closely associated to the concentration of released metal ions [6,28]. In this study, we measured the concentrations of metal ions released from all five types of NPs. We did not detect any metal ions released from TiO<sub>2</sub> NP solution, while Fe<sub>2</sub>O<sub>3</sub> and Co<sub>3</sub>O<sub>4</sub> NPs both released trace metal ions. For example, the aqueous solution with Co<sub>3</sub>O<sub>4</sub> NPs contained ~2 mg/L cobalt ion, but its inhibition of seed activity was minimal. Similarly, both Cu and Ni ions were released from the metal oxide NPs during incubation with the seeds (Table 2). To compare phytotoxicity between metal ions and NPs, we assessed seed activity in copper chloride and



nickel chloride solutions and determined their EC<sub>50</sub> values. When CuCl<sub>2</sub> or NiCl<sub>2</sub> solutions were used to treat seeds, the EC<sub>50</sub> concentrations of Cu<sup>2+</sup> and Ni<sup>2+</sup> were 5~8 mg/L and 9~19 mg/L, respectively. However, at their EC<sub>50</sub> concentrations, CuO or NiO NPs released much lower free metal ions (less than 2 mg/L). For example, a 13 mg/L CuO NP solution was able to strongly inhibit lettuce seed germination, while the free Cu<sup>2+</sup> concentration in the culture medium was only ~0.2 mg/L. Therefore, the phytotoxicity of metal oxide NPs is not only due to their dissolved metals ions, but also to their interactions with the seed/root surface.

It has been widely accepted that smaller NPs would have higher surface energy and thus prove more toxic to the cell [29]. However, metal oxide NPs often agglomerate in the aqueous phase to minimize surface energy, and disaggregating is difficult [13,14]. The actual size of our tested NPs in the aqueous solution was therefore up to 1 micrometer due to agglomeration (Table 3 and Figure 3). Previous studies reported that increasing the size of particle aggregates would reduce the toxic effect of the metal oxide particles [13,14]. On the other hand, suspended metal oxide NPs tend to coagulate (Table 3) because of their low zeta potentials in water solution (e.g., 1000 mg/L of CuO NPs: ~ -23.5 mV, determined by DLS) [27]. The phytotoxicity in our tests was not likely caused by mono-dispersed NPs. Instead, we observed that a large amount of NPs (e.g., TiO<sub>2</sub> or CuO) adsorbed on the surface of the seeds/roots in all experiments (Figure 3). The main factors contributing to such adsorption can be physical attachment of particles on a rough seed surface, electrostatic attraction and hydrophobic interactions between seeds and NP agglomerates. For example, variations in the lipid content/the wax of the seed coat would affect the strength of hydrophobic interactions between NPs and the seed coat [30-32]. The adsorption of NPs on the seed surface could generate locally concentrated ions (released from NPs) and enhance NP phytotoxicity. Such adsorption of NPs on the seeds' surface also explains why small-size lettuce seeds are particularly sensitive to NP phytotoxicity: due to the relatively high ratio of surface area to volume,

Total *NPs in solution (mg/L)	CuO	NiO	Fe <sub>2</sub> O <sub>3</sub>	Co <sub>3</sub> O <sub>4</sub>	TiO <sub>2</sub>
		100	100	1000	1000
**Average size (nm)	984	576	246	440	562

\* NPs suspension were prepared in dH<sub>2</sub>O (pH=7)

\*\*Average sizes (Z average) were determined by DLS after NPs incubated at room temperature for 30 min

Table 3: Size distribution of typical metal oxide NP solutions.

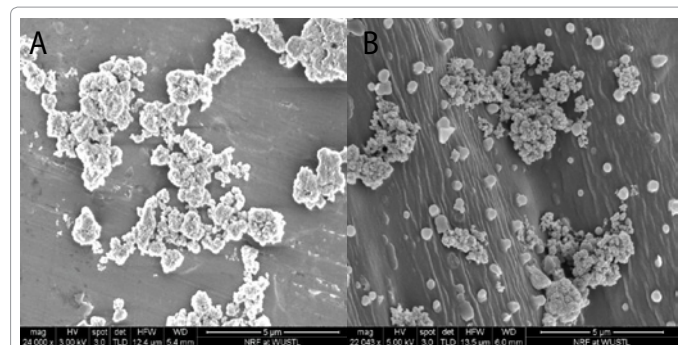


Figure 3: SEM images for NPs/lettuce seeds. In the aqueous phase, the SEM image shows that metal oxide NPs (TiO<sub>2</sub> NPs 1000 mg/L) (a) and (CuO NPs 1000 mg/L) were adsorbed on the seed surface (b).

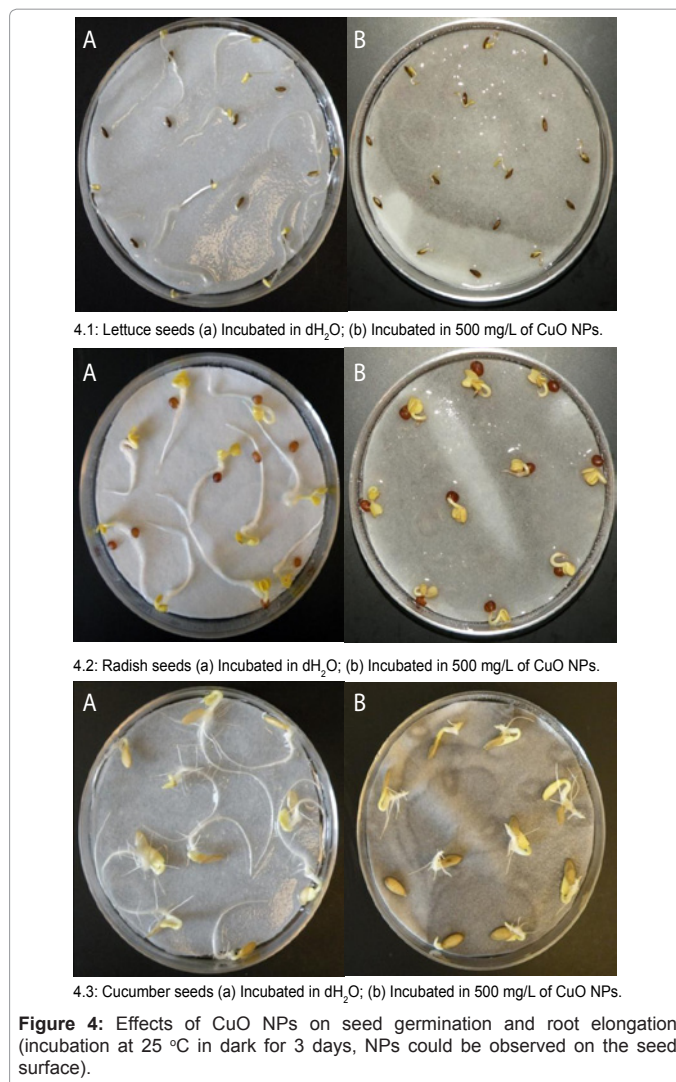


Figure 4: Effects of CuO NPs on seed germination and root elongation (incubation at 25 °C in dark for 3 days, NPs could be observed on the seed surface).

more toxic NPs per unit volume can be adsorbed on the seed surface [29,33]. Figure 4 shows the germination of lettuce seeds was more seriously inhibited by CuO NPs than other larger sized seeds (radish and cucumber seeds).

In conclusion, our experiments determined the impact of five different nanoparticles on common plant seeds. It was discovered that smaller sized seeds, such as lettuce seeds, are more sensitive to toxic NPs. Additionally, this study shows that engineered metal oxide nanoparticles may hold significant potential applications in agriculture and gardening, as they may selectively inhibit unwanted plants (such as weeds), kill harmful fungi and bacteria in plant fields, and release essential metal elements for plant growth.

#### Acknowledgments

We appreciate valuable suggestions given by Dr. Hui Wei from the University of Illinois at Urbana-Champaign. This research was supported by the National Research Foundation of Korea (2011-0026754) through the Ministry of Education, Science and Technology given to I. C. Kong. This research was also supported by Washington University MAGEEP program.

#### References

- Roco MC (2005) Environmentally Responsible Development of Nanotechnology. Environ Sci Technol 39: 106A-112A.

2. Lin D, Xing B (2008) Root Uptake and Phytotoxicity of ZnO Nanoparticles. *Environ Sci Technol* 42: 5580-5585.
3. Klaine SJ, Alvarez PJ, Batley GE, Fernandes TF, Handy RD, et al. (2008) Nanomaterials in the environment: Behavior, fate, bioavailability, and effects. *Environ Toxicol Chem* 27: 1825-1851.
4. Marambio-Jones C, Hoek EMV (2010) A review of the antibacterial effects of silver nanomaterials and potential implications for human health and the environment. *J Nanoparticle Res* 12: 1531-1551.
5. Wang Z, Lee YH, Wu B, Horst A, Kang Y, et al. (2010) Anti-microbial activities of aerosolized transition metal oxide nanoparticles. *Chemosphere* 80: 525-529.
6. Ji J, Long Z, Lin D (2011) Toxicity of oxide nanoparticles to the green algae *Chlorella* sp. *Chem Eng J* 170: 525-530.
7. Ma Y, Kuang L, He X, Bai W, Ding Y, et al. (2010) Effects of rare earth oxide nanoparticles on root elongation of plants. *Chemosphere* 78: 273-279.
8. Wang B, Feng WY, Wang TC, Jia G, Wang M, et al. (2006) Acute toxicity of nano- and micro-scale zinc powder in healthy adult mice. *Toxicol Lett* 161: 115-123.
9. Navarro E, Baun A, Behra R, Hartmann N, Filser J, et al. (2008) Environmental behavior and ecotoxicity of engineered nanoparticles to algae, plants, and fungi. *Ecotoxicology* 17: 372-386.
10. Menard A, Drobne D, Jemec A (2011) Ecotoxicity of nanosized TiO<sub>2</sub>. Review of in vivo data. *Environ Pollut* 159: 677-684.
11. Limbach LK, Wick P, Manser P, Grass RN, Bruinink A, et al. (2007) Exposure of Engineered Nanoparticles to Human Lung Epithelial Cells: Influence of Chemical Composition and Catalytic Activity on Oxidative Stress. *Environ Sci Technol* 41: 4158-4163.
12. Di Salvatore M, Carafa AM, Carratù G (2008) Assessment of heavy metals phytotoxicity using seed germination and root elongation tests: A comparison of two growth substrates. *Chemosphere* 73: 1461-1464.
13. Lin D, Xing B (2007) Phytotoxicity of nanoparticles: Inhibition of seed germination and root growth. *Environ Pollut* 150: 243-250.
14. Yang L, Watts DJ (2005) Particle surface characteristics may play an important role in phytotoxicity of alumina nanoparticles. *Toxicol Lett* 158: 122-132.
15. Mondal A, Basu R, Das S, Nandy P (2011) Beneficial role of carbon nanotubes on mustard plant growth: an agricultural prospect. *J Nanoparticle Res* 13: 4519-4528.
16. Rico CM, Majumdar S, Duarte-Gardea M, Peralta-Videa JR, Gardea-Torresdey JL (2011) Interaction of Nanoparticles with Edible Plants and Their Possible Implications in the Food Chain. *J Agric Food Chem* 59: 3485-3498.
17. Rivetta A, Negrini N, Cocucci M (1997) Involvement of Ca<sup>2+</sup>-calmodulin in Cd<sup>2+</sup> toxicity during the early phases of radish (*Raphanus sativus* L.) seed germination. *Plant Cell Environ* 20: 600-608.
18. Wang X, Sun C, Gao S, Wang L, Shuokui H (2001) Validation of germination rate and root elongation as indicator to assess phytotoxicity with *Cucumis sativus*. *Chemosphere* 44: 1711-1721.
19. US EPA (1996) Ecological Effects Test Guidelines (OPPTS 850.4200): Seed Germination/Root Elongation Toxicity Test.
20. Reddy KN, Singh M (1992) Germination and Emergence of Hairy Beggarticks (*Bidens pilosa*). *Weed Sci* 40: 195-199.
21. El-Temseh YS, Joner EJ (2010) Impact of Fe and Ag nanoparticles on seed germination and differences in bioavailability during exposure in aqueous suspension and soil. *Environ Toxicol* 27: 42-49.
22. Barrena R, Casals E, Colón J, Font X, Sánchez A, et al. (2009) Evaluation of the ecotoxicity of model nanoparticles. *Chemosphere* 75: 850-857.
23. Thompson WH, Legee PB, Millner PD, Watson ME (2001) Test methods for the examination of composting and compost. USCC, and USDA, Eds.
24. Hamilton MA, Russo RC, Thurston RV (1977) Trimmed Spearman-Kärber method for estimating median lethal concentrations in toxicity bioassays. *Environ Sci Technol* 11: 714-719.
25. Lu CM, Zhang CY, Wen JQ, Wu GR, Tao MX (2002) Research of the effect of nanometer materials on germination and growth enhancement of Glycine max and its mechanism. *Soybean Sci* 21: 168-172 (Chinese Journal).
26. Khodakovskaya M, Dervishi E, Mahmood M, Xu Y, Li Z, et al. (2009) Carbon Nanotubes Are Able To Penetrate Plant Seed Coat and Dramatically Affect Seed Germination and Plant Growth. *ACS Nano* 3: 3221-3227.
27. Nair R, Varghese SH, Nair BG, Maekawa T, Yoshida Y, et al. (2010) Nanoparticulate material delivery to plants. *Plant Sci* 179: 154-163.
28. Navarro E, Piccapietra F, Wagner B, Marconi F, Kaegi R, et al. (2008) Toxicity of Silver Nanoparticles to *Chlamydomonas reinhardtii*. *Environ Sci Technol* 42: 8959-8964.
29. Krug HF, Wick P (2011) Nanotoxicology: An Interdisciplinary Challenge. *Angew Chem Int Ed* 50: 1260-1278.
30. Zhu HN, Lu QX, Abdollahi K (2005) Seed Coat Structure of *Pinus Koraiensis*. *Microsc Microanal* 11: 1158-1159.
31. Zeng LW, Cocks PS, Kailis SG, Kuo J (2005) The role of fractures and lipids in the seed coat in the loss of hardseededness of six Mediterranean legume species. *J Agric Sci* 143: 43-55.
32. Hu X, Daun J, Scarth R (1994) Proportions of C18:1n-7 and C18:1n-9 fatty acids in canola seedcoat surface and internal lipids. *J Am Oil Chem Soc* 71: 221-222.
33. Stark WJ (2011) Nanoparticles in Biological Systems. *Angew Chem Int Ed* 50: 1242-1258.