

Intracardiac mass in chronic myeloid leukaemia

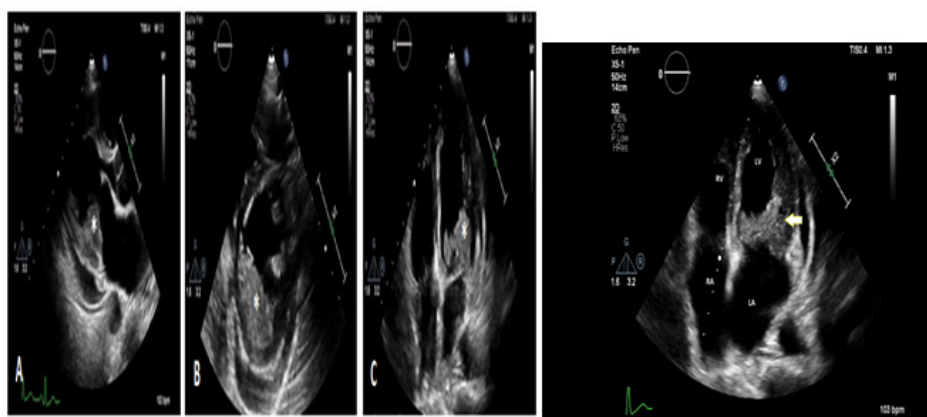
Chetana Krishnegowda

Sri Jayadeva Institute of Cardiovascular Sciences and Research, India



Abstract

The advent of tyrosine kinase inhibitors has dramatically changed the outlook for patients with CML. However, they remain at a high risk of thrombotic complications and bleeding amounting to increased mortality. There are no large-scale studies available for guiding appropriate anticoagulation therapy and management of complications. Differentiating an intracardiac thrombus from vegetation and chloroma in these patients by multimodality imaging and initiation of appropriate treatment are vital in reducing the overall morbidity and mortality. Herein we describe a rare case of CML presenting with an intracardiac thrombus attached to the posterior mitral leaflet, and subsequently resulting in peripheral embolisation.



Biography

Chetana has been trained in interventional cardiology at one of the largest cardiac care destinations in South East Asia and is competent in independently performing coronary angiograms and angioplasties. She also has passion towards clinical cardiology and non-invasive cardiology (including cardiac imaging). She has several publications and international case presentations including TCT 2018.