

## Hemi Retinal Vein Occlusion a Particular form of Retinal Vein Occlusion

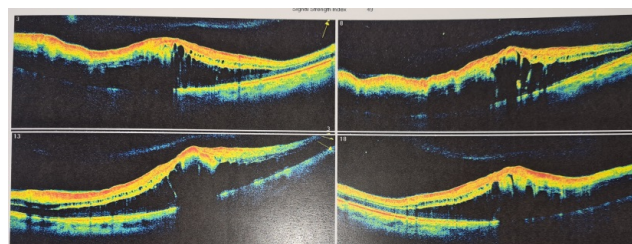
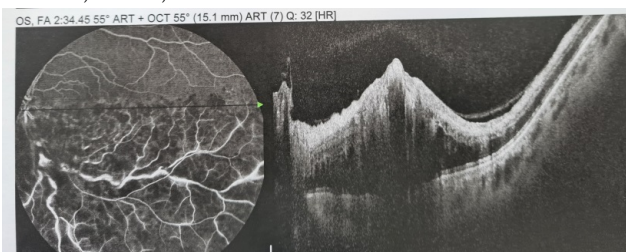
Nawal Khanaouchi\*

Department of Ophthalmology, Military Instruction Hospital Mohammed V, Rabat, Morocco

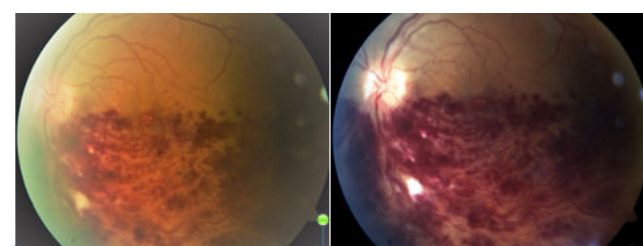
### CLINICAL CASE

We report a case of 55 year old women, with a medical history of hypertension and diabetes, who complained of a sudden loss of vision of her left eye. Her VA was less than 20/200; slit lamp and gonioscopy were unremarkable. Dilated fundus examination had shown an Aspect of HRVO with a Thunder of flame shaped retinal hemorrhages covering the inferior half of the retina, tortuous veins and cotton -wool spots.

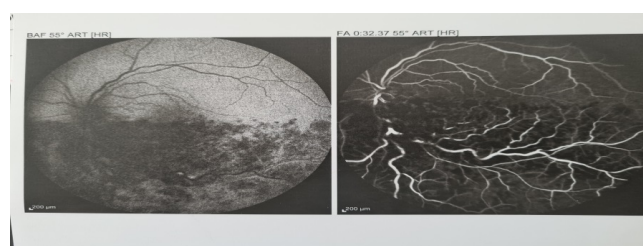
AGF confirmed the venous occlusion caused by delaying the filling of the involved vein, and presence of tortuous veins and extensive hemorrhages in the inferior half of the retina (figure 1). Oct highlighted the Cystoid macular edema. (Figure2).



Cystoid macular edema on oct



HRVO with a Thunder of flame shaped retinal hemorrhages covering the inferior half of the retina, tortuous veins and cotton -wool spots.



Tortuous veins and extensive hemorrhages in the inferior half of the retina on angiography

Retinal vein occlusion (RVO) is the most common retinal vascular disease after diabetic retinopathy [1]. Most of the published studies distinguish two types of RVO: CRVO and BRVO. A further type called hemi- retinal vein occlusion( HRVO ), was considered so far as a simply variant of BRVO, is currently defined as a particular form of CRVO [2].

HCRVO is a distinct entity that is clinically and pathogenetically closely related to CRVO [3]. It has been shown that dual trunk central retinal vein (CRV) occurs in 20.3 per cent of a normal population [4]. HRVO involves occlusion of one of the two trunks, as described above. Half of the retinal surface is thus affected by this occlusion.

Patients usually complain of sudden, painless, unilateral loss of vision. Generally, the profound visual impairment is due to macular edema. Fundus clinical features of HCRVO are similar to those of CVO; however they remain confined to one half of retinal surface corresponding to the occluded trunk. HCRVO is characterized with flame-shaped, dot or blot retinal hemorrhages, dilated tortuous veins with or without optic disc edema, hard exudates, cotton -wool spots and macular edema.

\*Correspondence to: Nawal Khanaouchi, Department of Ophthalmology, Military Instruction Hospital Mohammed V, Rabat, Morocco; Tel No: 661588759; E-mail: ourouadi@gmail.com

Received Date: June 15, 2021; Accepted Date: October 12, 2021; Published Date: October 22, 2021

Citation: Khanaouchi N (2021) Hemi Retinal Vein Occlusion a Particular form of Retinal Vein Occlusion. J Eye Dis Disord 06:p397.

Copyright: © 2021 Khanaouchi N. This is an open-access article distributed under the terms of the Creative Commons Attribution License, which permits unrestricted use, distribution, and reproduction in any medium, provided the original author and source are credited.

HRVO is divided in ischemic and non-ischemic type [5]. Neovascular complications, occurs in ischemic form of HRVO, such as Neovascularization of retina and/or optic disc and/or rubeosis iridis. Eventually, late complications are vitreous hemorrhages, retinal detachment, neovascular glaucoma.

Common risk factor for retinal vein occlusion is advancing age, and additional risk factors include systemic conditions such as hypertension, arteriosclerosis, diabetes mellitus, hyperlipidemia, vascular cerebral stroke. However blood hyper viscosity and thrombophilia are more frequent in younger patients with HRVO. Ophthalmic risk factors for retinal vein occlusion are ocular hypertension and glaucoma, higher ocular perfusion pressure and changes in the retinal arteries. [5]

The management of HRVO depends on the type of the HRVO whether it is an ischemic or non -ischemic form, it is basically a treatment of complications such as macular edema and neovascularization. The most effective treatments are intravitreal

injections of Anti-VEGF or corticosteroids, grid laser is reserved for focal macular edema and surgery is indicated in case of vitreous hemorrhages or retinal detachment.

## REFERENCES

1. M. REHAK P. WIEDEMANN. Retinal vein thrombosis: pathogenesis and management 2010.
2. La Spina, Carlo et al. "Practical management of retinal vein occlusions." *Ophthalmol Ther.* vol. 1,1 (2012): 3.
3. Sohan Singh Hayreh, MD, PhD, FRCS, Manmohindar Singh Hayreh, MD. Hemi-Central Retinal Vein Occlusion Pathogenesis, Clinical Features, and Natural History.
4. Chopdar A. Hemi-central retinal vein occlusion. Pathogenesis, clinical features, natural history and incidence of dual trunk central retinal vein. *Trans Ophthalmol Soc U K.* 1982; 102 (pt 2):241-8.
5. Kolar P. Definition and Classification of Retinal Vein Occlusion. *Int J Ophthalmol.* 2016.