

Exploration of Biomarkers for Asbestos Exposure and Occurrence of Malignant Mesothelioma Based on the Immunological Effects of Asbestos

Hiddenori Matsuzaki¹, Suni Lee¹, Naoko Takei-Kumagai¹, Hiroaki Hayashi², Yoshie Miura³, YingChen⁴, Megumi Maeda⁵, Shoko Yamamoto¹, Tamayo Hatayama¹, Yasumitsu Nishimura¹ and Takemi Otsuki^{1*}

¹Department of Hygiene, Kawasaki Medical School, 577 Matsushima, Kurashiki 7010192, Japan

²Department of Dermatology, Kawasaki Medical School, 577 Matsushima, Kurashiki 7010192, Japan

³Department of Molecular Genetics, Division of Molecular and Clinical Genetics, Medical Institute of Bioregulation, Kyushu University, Fukuoka, Japan

⁴Division of Pneumoconiosis, School of Public Health, China Medical University, 92 North 2nd, Heping District, Shenyang 110001, P. R. China

⁵Laboratory of Functional Glycobiology, Department of Biofunctional Chemistry, Division of Agricultural and Life Science, Graduate School of Environmental and Life Science, Okayama University, 1-1-1 Tsushima-Naka, Okayama, 700-8530, Japan

Abstract

Investigation was carried out on the immunological effects of asbestos on individuals and found that asbestos exposure not only reduces the effectiveness of tumor surveillance but also makes asbestos exposed individuals sensitive to tumor development. The continuous experimental exposure of T cells to asbestos has enhanced production of IL-10 and TGF- β . It has also provoked over expression of Bcl-2 with reduced expression of cell-surface CXCR3 and suppressed IFN- γ production with decreased expression of activating receptors such as Nkp46 in NK cells. These alterations were also detected in asbestos-exposed patients such as those with pleural plaque or mesothelioma. Such changes in combination with certain markers produced by mesothelioma cells may therefore be considered as an initial screening system for asbestos exposure and developing mesothelioma using peripheral blood.

Keywords: Asbestos; Mesothelioma; T cell; NK cells

Introduction

Asbestos causes not only non-malignant changes to the pulmonary system such as lung fibrosis (asbestosis), pleural thickening and benign pleural effusion, but also malignant diseases such as lung cancer and malignant mesothelioma (MM) [1,2]. In addition, people exposed to asbestos are at a higher risk of developing cancers of the larynx, gastrointestinal (GI) tract and bladder [3-5]. In particular, MM is considered very difficult to handle clinically, especially because is thought to appear approximately 40 years after the initial exposure to asbestos. In addition, the degree of exposure associated with the development of MM is relatively lower than that which causes lung fibrosis and lung cancer [6,7]. Thus, high incidence of asbestosis is observed in workers associated with asbestos-processing industries. However, MM might also occur in family members of those workers if they reside near the asbestos-handling plants, and also in people who doesn't have any past history of exposure to asbestos.

Clinical issues concerning MM include difficulty of diagnosis, treatment, and poor prognosis [6-10]. The latency period following the initial exposure to asbestos is around 40 years, and MM usually progresses rapidly once it has developed at the diagnostic level. The half-survival time is still around one year, even after the medication with new chemotherapeutic drugs such as pemetrexedare [6-10].

An early diagnosis with subsequent surgical rejection of the tumor represents the strongest strategy to cure MM patients [11,12]. Diagnosis is done using radio-diagnostic screening for workers in asbestos-handling industries. If the workers show evidence of pleural plaque (PP) they are examined once every 6 months, otherwise they are examined using a standard chest X-P approximately once every three years. However, there are some limitations to this approach. For example, although PP is evidence of asbestos exposure, it does not represent a pre-malignant state; therefore MM may develop in asbestos-exposed people without PP. Furthermore, even if patients with PP manifest signs of MM, examination once every 6 months might be too infrequent and may allow MM cells to proliferate to an inoperable

volume. Precisely, there is almost no way to detect the occurrence of MM among people who lived near asbestos-handling industries.

Various biomarkers for the early detection of MM have been explored and reported during this decade [13-15]. These include soluble mesothelin-related peptide (SMRP) [16-19], mesothelin [20,21], osteopontin [22,23], platelet-derived growth factor (PDGF) [24], and vascular endothelial growth factor (VEGF) [25]. Recent trials have published more candidate molecules like: fibulin-3 [26], megakaryocyte potentiating factor (MPF) [27,28], chemokine (C-C motif) ligand 2 (CCL2) [29], the secretory leukocyte peptidase inhibitor (SLPI) [29], and interleukin (IL)-4 receptor (R) α [30]. Moreover, some micro RNAs (miR) such as miR-625-3p [31], miR-126 [32], miR-34b/c [33] and miR-103 [34] may be potential candidates. More recently, microarray assays using serum from asbestos-exposed people with or without MM indicated the potential usefulness of various marker combinations for the screening of MM.

In addition to the search for biomarkers of MM, a screening system to detect asbestos exposure and the occurrence of MM has been presented in this manuscript. Asbestos is a mineral silicate that includes the core elements of Si and O [1,2]. Exposure to silica (SiO₂) causes lung fibrosis and dys-regulation of autoimmunity [35-37]. The condition of silicosis patients is often complicated with rheumatoid arthritis (known as Caplan's Syndrome [38,39]) and systemic sclerosis,

***Corresponding author:** Takemi Otsuki, Department of Hygiene, Kawasaki Medical School, 577 Matsushima, Kurashiki 7010192, Japan, Tel: 81 86 462 1111; Fax: 81 86 464 1125; E-mail: takemi@med.kawasaki-m.ac.jp

Received January 01, 2013; **Accepted** January 24, 2013; **Published** January 31, 2013

Citation: Matsuzaki H, Lee S, Takei-Kumagai N, Hayashi H, Miura Y, et al. (2013) Exploration of Biomarkers for Asbestos Exposure and Occurrence of Malignant Mesothelioma Based on the Immunological Effects of Asbestos. J Data Mining Genomics Proteomics S2: 001. doi:[10.4172/2153-0602.S2-001](https://doi.org/10.4172/2153-0602.S2-001)

Copyright: © 2013 Matsuzaki H, et al. This is an open-access article distributed under the terms of the Creative Commons Attribution License, which permits unrestricted use, distribution, and reproduction in any medium, provided the original author and source are credited.

and some recent reports have shown complications involving antineutrophil cytoplasmic auto antibody (ANCA)-related vasculitis/nephritis [35-37]. Since silica's direct affect on human T cells through perturbation of autoimmune regulation has been shown [40,41], asbestos may also result in these immunological effects. Based on the complications found in asbestos-exposed individuals, the malignant diseases are the most crucial complications, and if the immunological effects promote the development of tumor, those effects might involve reduction of tumor surveillance and a decrease of anti-tumor immunity as shown in figure 1.

In addition to these immunological effects, asbestos alters mesothelial cells via the production of reactive oxygen/nitrogen species (ROS/RNS) caused by iron included in the asbestos fibers and adsorption of other carcinogens in the lung [42-45]. Mesothelial cells then acquire molecular changes that include inactivation of some tumor suppressors such as p16^{ink4} [46,47], merlin/Neurofibromatosis 2 (NF2) [48] and large tumor suppressor 2 (LATS2) [49], activation of Yes-associated protein (YAP1) [50], and alteration of BRCA1-associated protein-1 (BAP1) [51,52] as shown in figure 1.

To explore these aspects, the effects of asbestos on T cells, natural killer (NK) cells, and other types of immune competent cells were investigated. In this review, we detail the altered molecules in T cells and NK cells. Additionally, we show that our experiments have yielded new insights concerning the biological effects of asbestos, and that these findings support the use of immunological biomarkers for the screening of asbestos exposure and MM.

Continuous Asbestos Exposure Model for T cells

As shown in figure 2, we started by investigating the immunological effects of asbestos on T cells [53] because we had already investigated alteration of Fas/CD95 and its related molecules in T cells following silica exposure [40,41], and it is known that T cells and NK cells play an important role for tumor immunity.

Initially, a human T cell leukemia/lymphoma virus-1 (HTLV-1) immortalized polyclonal T cell line, MT-2 [54], was used to observe

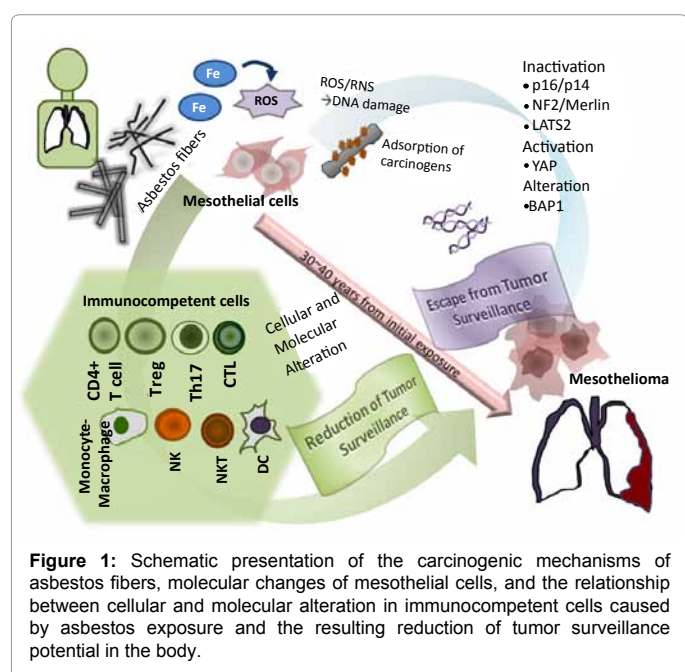


Figure 1: Schematic presentation of the carcinogenic mechanisms of asbestos fibers, molecular changes of mesothelial cells, and the relationship between cellular and molecular alteration in immunocompetent cells caused by asbestos exposure and the resulting reduction of tumor surveillance potential in the body.

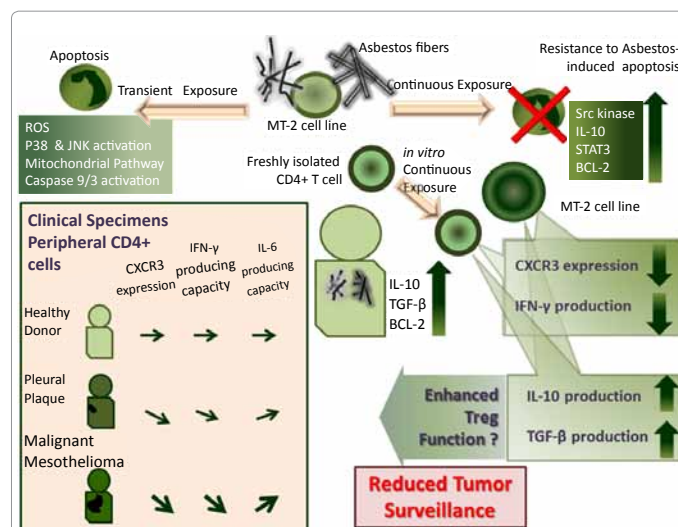


Figure 2: Schematic presentation of the experimental model regarding the immunological effects of asbestos on T cells. Although transient exposure caused apoptosis, T cells acquired resistance to apoptosis when continuously exposed at low levels. The molecular changes found in continuously exposed T cells were also found in asbestos-exposed patients with pleural plaque or malignant mesothelioma. These molecules are candidates for use as biomarkers and are important when considering the biological effects of asbestos and the induced reduction of tumor surveillance in the body.

the effects of transient and high-dose (causing apoptosis) exposure to chrysotile, which is known as the white asbestos. Chrysotile was chosen on the basis of its global use as an economic form of asbestos. We hoped to observe the immunological effects caused by the fibers of this most frequently used form of asbestos, even though it is carcinogenic potential, is considered much less than that of brown (amosite) and blue (crocidolite) asbestos, both of which includes iron [55].

The transient exposure to chrysotile caused the production of ROS, activation of pro-apoptotic signaling molecules such as p38 and c-Jun N-terminal kinase (JNK), activation of the mitochondrial apoptotic pathway, and finally induced apoptosis. We then tried to establish a continuous exposure model involving the MT-2 cell line [53]. Starting from the chrysotile dose that caused apoptosis in less than half of cells subjected to transient exposure, the continuous exposure experiment was maintained for more than eight months. This subline showed transient chrysotile-induced apoptosis [56]. The molecular status of this subline in comparison with the original MT-2 cells showed involvement of Src family kinases, upregulation of IL-10, phosphorylation of Signal Transducers and Activators of Transcription (STAT) 3, and upregulation of Bcl-2 [56]. An additional five chrysotile-continuous exposure subline models and three crocidolite continuous exposure models were established independently [57]. A comparison of the cellular and molecular features of these sublines indicated that all sublines exhibited a similar mRNA expression pattern as analyzed by cDNA microarray, and showed the same particular characteristics concerning acquisition of resistance to apoptosis [57].

These sublines revealed the reduced cell surface expression of chemokine (C-X-C motif) receptor 3 (CXCR3) in CD4+ T cells, as well as suppression of interferon (IFN)-γ production [58,59]. Furthermore, the secretion of transforming growth factor (TGF)-β from the sublines was also enhanced when compared with that of the original MT-2 line. These findings were also confirmed when freshly isolated peripheral CD4+ T cells derived from several healthy donors were activated and cultured *in vitro* with chrysotile fibers.

Reduction of CXCR3 with suppressed IFN- γ production results in the reduction of anti-tumor immunity. Moreover, overproduction of IL-10 and TGF- β (both cytokines are known as the typical soluble factor for CD4+25+ and fork head box P3 (FoxP3) positive regulatory T cells (Treg)) in the MT-2 line, which is assumed to be an *in vitro* model of Treg, indicated that asbestos exposure may enhance Treg function and reduce anti-tumor immunity. We also compared the inhibitory function of MT-2 original MT-2 cells (never exposed to asbestos) and sublines (continuously exposed to chrysotile or crocidolite) in regard to Treg, namely, suppression of the proliferation activity of responder T cells against foreign antigens, and found that asbestos exposure enhanced Treg function by cell-cell contact via upregulation of some cell surface molecules (unpublished data). The results indicated that asbestos exposure on Treg enhances its function via excess production of soluble factors and increased cell contact.

Although these findings summarized in figure 2 are interesting when considering the biological effects of asbestos in the various contexts of asbestos-induced carcinogenesis, these cellular and molecular changes may be utilized as biomarkers for asbestos exposure and the presence of MM. As expected, we found that plasma levels of IL-10 and TGF- β were higher in MM patients, and Bcl-2 expression in peripheral CD4+ T cells derived from MM was higher than that associated with healthy donors.

Regarding CXCR3 and IFN- γ , peripheral CD4+ T cells from PP and MM showed reduced expression of CXCR3 when compared with that of healthy donors, a finding that resembles the results we found for *in vitro* assays using the MT-2 cell line or freshly isolated peripheral CD4+ T cells [58,59]. In addition, peripheral CD4+ cells from PP or MM showed a reduced potential to produce IFN- γ , although the capacity to produce IL-6 was enhanced in these CD4+ T cells from asbestos-exposed patients.

Change of NKp46 expression for NK cells in Asbestos-Exposed Patients

As described above, asbestos exposure altered T cell functions and the expression of certain molecules related to anti-tumor immunity. These findings may indicate that asbestos causes a gradual reduction of tumor surveillance potential and makes people sensitive to transforming activity, which results in the development of tumors such as lung cancer and MM, as well as producing a higher risk of developing other tumors of the larynx, GI tract and bladder [3-5].

The direct and main player of tumor surveillance is the NK cell. Therefore, we examined the cellular and molecular alteration of NK cells caused by asbestos exposure. As performed with T cells, the NK cell line YT-1 (kindly provided by Prof. Yodoi of Kyoto University) and freshly isolated NK cells from healthy donors were exposed continuously *in vitro*. Results showed that the expression of some activation receptor molecules such as NKG2D and 2B4 was reduced after long-term exposure to chrysotile. There was also a reduction of killing activity with a decrease of phosphorylation of Extracellular Signal-regulated Kinase (ERK) signaling molecule and inhibition of degranulation of killing molecules such as granzyme and perforin. These results indicated that asbestos exposure causes suppression of NK cell activity and reduced expression of activating receptors [60,61].

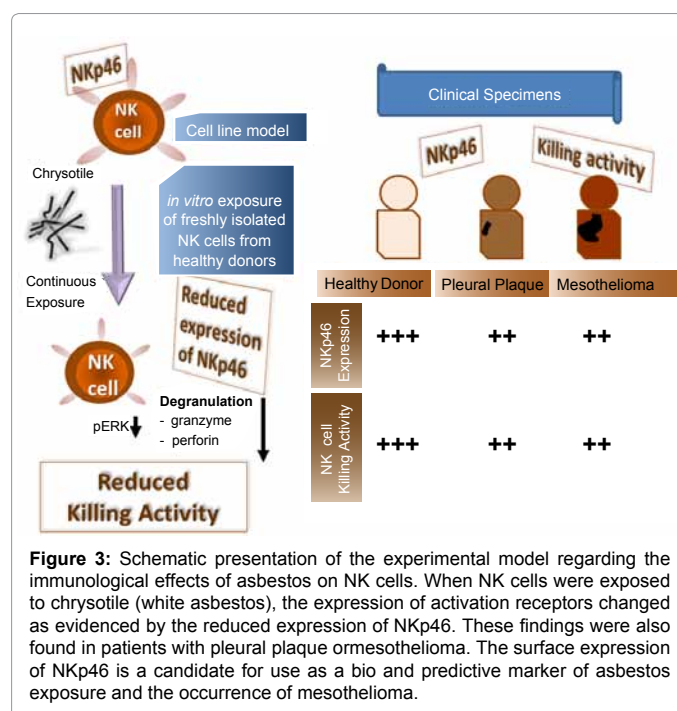
The killing activity and expression of activating receptors in NK cells freshly isolated from asbestos-exposed patients such as PP and MM were then compared with those of healthy donors. As shown in figure 3, the expression of one NK cell activating receptor, NKp46, was decreased and positively related with killing activity [62,63].

These findings are of interest when considering the biological effects of asbestos in regard to reduced tumor surveillance. Furthermore, the expression of NKp46 in NK cells may be utilized as a marker of asbestos exposure and the development of MM in asbestos-exposed patients.

Other Trials

A recent report involving a comprehensive analysis using proteomics in serum [64] was performed in asbestos-exposed people with or without MM and indicated several molecules as markers for the detection of MM, and their potential usefulness as candidates for the screening of asbestos-exposed people using blood. The taking of blood samples has more advantages compared with radiological examinations. It is therefore possible to select 10 to 20 candidate molecules that change in asbestos-exposed individuals and/or patients with MM, and use these molecules for a screening system concerning the early detection of asbestos exposure and MM. We may also decide, for example, that a radiological examination is necessary if more than half of these molecules have changed in an individual.

To further investigate this type of approach, we recently performed comprehensive analyses of immunological molecules in plasma such as interleukins, chemokines, and other molecules related to immune responses because asbestos influences immunocompetent cells as shown above, and changes of immune cells caused by asbestos exposure can be detected using peripheral blood. Our investigations have not only focused on detecting the differences among healthy donors, PP and MM patients, but we have also recently examined alterations of these molecules in plasma between asbestos- and silica-exposed patients. As mentioned above, it may be interesting to compare findings obtained from silicosis patients with those derived from certain autoimmune diseases such as rheumatoid arthritis and systemic sclerosis to further elucidate the effects of silica exposure. The results of such an investigation will be presented in the near future.



Conclusion

Discovery of the alteration of immune cells such as T cells and NK cells following asbestos exposure is interesting for a consideration of the biological effects of asbestos, as well as the mechanisms surrounding asbestos-induced carcinogenesis [65,66]. Additionally, the changes of immune cells are easily detected using peripheral blood. Taking a peripheral blood sample from a patient is an easier procedure to perform relative to other procedures; it can potentially be performed frequently, and involves less risk of irradiation and a lower cost compared with radiological examinations. Moreover, the monitoring of 10 to 20 altered molecules using the blood sample represents the best approach for an initial screening system concerning the detection of asbestos exposure and developing MM. Although tumor biomarkers have a certain limitation in that serum levels of molecules produced by tumors are dependent on tumor volumes, the combined use of immunological molecules and molecules produced by tumors may allow us to determine whether an examined individual should proceed towards detailed examinations such as radiological analyses using X-P, CT and MRI.

In this review, we briefly introduced our findings examining the immunological effects of asbestos and the method by which these findings could be used clinically for an early screening system for asbestos exposure and developing MM.

Acknowledgements

The authors especially thank Ms. MinakoKato, Naomi Miyahara, Yoshiko Yamashita, Tomoko Sueishi, Keiko Kimura, and Misao Kuroki for their technical help. The experimental results performed by us and presented partly in this review were supported by Special Funds for Promoting Science and Technology (H18-1-3-3-1), JSPS KAKENHI (23790679, 23890237, 22790550, 22700933, 20390178 and 20890270), the Takeda Science Foundation (TokuteiKenkyuJosei I, 2008), and Kawasaki Medical School Project Grants (24B-9/39, 24S-4/6, 23P-3, 23B-66 and 23S-6/5).

References

- Roggli VL, Oury TD, Sporn TA (2004) Pathology of asbestos-associated diseases. (2nd edn), Springer-Verlag, New York, USA.
- Myers R (2012) Asbestos-related pleural disease. *Curr Opin Pulm Med* 18: 377-381.
- Institute of Medicine (US) Committee on Asbestos: Selected Health Effects (2006) Asbestos: Selected cancers. (1st edn) The National Academies Press, Washington DC, USA.
- Dodson RF, Hammar SP (2011) Asbestos: Risk assessment, epidemiology, and health effects. (2nd edn), CRC Press, Taylor & Francis Group, Boca Raton, FL, USA.
- Craighead JE, Gibbs AR (2008) Asbestos and its diseases. (1st edn), Oxford University Press, New York, USA.
- O'Byrne K, Rusch V (2006) Malignant pleural mesothelioma. (1st edn), Oxford University Press, New York, USA.
- Baldi A (2008) Mesothelioma from bench side to clinic. (1st edn), Nova Science Publishers, New York, USA.
- Ismail-Khan R, Robinson LA, Williams CC Jr, Garrett CR, Bepler G, et al. (2006) Malignant pleural mesothelioma: a comprehensive review. *Cancer Control* 13: 255-263.
- Baas P (2007) Optimising survival in malignant mesothelioma. *Lung Cancer* 57: S24-S29.
- Grosso F, Scagliotti GV (2012) Systemic treatment of malignant pleural mesothelioma. *Future Oncol* 8: 293-305.
- Astoul P, Roca E, Galateau-Salle F, Scherpereel A (2012) Malignant pleural mesothelioma: from the bench to the bedside. *Respiration* 83: 481-493.
- Gill RR (2011) Imaging of mesothelioma. *Recent Results Cancer Res* 189: 27-43.
- Klebe S, Henderson DW (2011) Early stages of mesothelioma, screening and biomarkers. *Recent Results Cancer Res* 189: 169-193.
- Ray M, Kindler HL (2009) Malignant pleural mesothelioma: an update on biomarkers and treatment. *Chest* 136: 888-896.
- Creaney J, Robinson BW (2009) Serum and pleural fluid biomarkers for mesothelioma. *Curr Opin Pulm Med* 15: 366-370.
- Canessa PA, Franceschini MC, Ferro P, Battolla E, Dessanti P, et al. (2013) Evaluation of soluble mesothelin-related peptide as a diagnostic marker of malignant pleural mesothelioma effusions: its contribution to cytology. *Cancer Invest* 31: 48-55.
- Robinson BW, Lake RA (2005) Advances in malignant mesothelioma. *N Engl J Med* 353: 1591-1603.
- Weber DG, Taeger D, Pesch B, Kraus T, Brüning T, et al. (2007) Soluble mesothelin-related peptides (SMRP) - high stability of a potential tumor marker for mesothelioma. *Cancer Biomark* 3: 287-292.
- Wheatley-Price P, Yang B, Patsios D, Patel D, Ma C, et al. (2010) Soluble mesothelin-related peptide and osteopontin as markers of response in malignant mesothelioma. *J Clin Oncol* 28: 3316-3322.
- Nakaishi M, Kajino K, Ikesue M, Hagiwara Y, Kuwahara M, et al. (2007) Establishment of the enzyme-linked immunosorbent assay system to detect the amino terminal secretory form of rat Erc/Mesothelin. *Cancer Sci* 98: 659-664.
- Hino O, Maeda M (2008) Diagnostic tumor marker of asbestos-related mesothelioma. *Environ Health Prev Med* 13: 71-74.
- Pass HI, Lott D, Lonardo F, Harbut M, Liu Z, et al. (2005) Asbestos exposure, pleural mesothelioma, and serum osteopontin levels. *N Engl J Med* 353: 1564-1573.
- Grigoriu BD, Scherpereel A, Devos P, Chahine B, Letourneux M, et al. (2007) Utility of osteopontin and serum mesothelin in malignant pleural mesothelioma diagnosis and prognosis assessment. *Clin Cancer Res* 13: 2928-2935.
- Filiberti R, Marroni P, Neri M, Ardizzone A, Betta PG, et al. (2005) Serum PDGF-AB in pleural mesothelioma. *Tumour Biol* 26: 221-226.
- Hirayama N, Tabata C, Tabata R, Maeda R, Yasumitsu A, et al. (2011) Pleural effusion VEGF levels as a prognostic factor of malignant pleural mesothelioma. *Respir Med* 105: 137-142.
- Pass HI, Levin SM, Harbut MR, Melamed J, Chiriboga L, et al. (2012) Fibulin-3 as a blood and effusion biomarker for pleural mesothelioma. *N Engl J Med* 367: 1417-1427.
- Onda M, Nagata S, Ho M, Bera TK, Hassan R, et al. (2006) Megakaryocyte potentiation factor cleaved from mesothelin precursor is a useful tumor marker in the serum of patients with mesothelioma. *Clin Cancer Res* 12: 4225-4231.
- Creaney J, Yeoman D, Demelker Y, Segal A, Musk AW, et al. (2008) Comparison of osteopontin, megakaryocyte potentiating factor, and mesothelin proteins as markers in the serum of patients with malignant mesothelioma. *J Thorac Oncol* 3: 851-857.
- Blanquart C, Gueugnon F, Nguyen JM, Roulois D, Cellerin L, et al. (2012) CCL₂, galectin-3, and SMRP combination improves the diagnosis of mesothelioma in pleural effusions. *J Thorac Oncol* 7: 883-889.
- Burt BM, Bader A, Winter D, Rodig SJ, Bueno R, et al. (2012) Expression of interleukin-4 receptor alpha in human pleural mesothelioma is associated with poor survival and promotion of tumor inflammation. *Clin Cancer Res* 18: 1568-1577.
- Kirschner MB, Cheng YY, Badrian B, Kao SC, Creaney J, et al. (2012) Increased circulating miR-625-3p: a potential biomarker for patients with malignant pleural mesothelioma. *J Thorac Oncol* 7: 1184-1191.
- Tomasetti M, Staffolani S, Nocchi L, Neuzil J, Strafella E, et al. (2012) Clinical significance of circulating miR-126 quantification in malignant mesothelioma patients. *Clin Biochem* 45: 575-578.
- Kubo T, Toyooka S, Tsukuda K, Sakaguchi M, Fukazawa T, et al. (2011) Epigenetic silencing of microRNA-34b/c plays an important role in the pathogenesis of malignant pleural mesothelioma. *Clin Cancer Res* 17: 4965-4974.
- Weber DG, Johnen G, Bryk O, Jöckel KH, Brüning T (2012) Identification of miRNA-103 in the cellular fraction of human peripheral blood as a potential biomarker for malignant mesothelioma—a pilot study. *PLoS One* 7: e30221.

35. Steenland K, Goldsmith DF (1995) Silica exposure and autoimmune diseases. Am J Ind Med 28: 603-608.
36. Uber CL, McReynolds RA (1982) Immunotoxicology of silica. Crit Rev Toxicol 10: 303-319.
37. Hess EV (2002) Environmental chemicals and autoimmune disease: cause and effect. Toxicology 181: 65-70.
38. Caplan A (1959) Rheumatoid disease and pneumoconiosis (Caplan's syndrome). Proc R Soc Med 52: 1111-1113.
39. Caplan A, Payne RB, Withey JL (1962) A broader concept of Caplan's syndrome related to rheumatoid factors. Thorax 17: 205-212.
40. Otsuki T, Maeda M, Murakami S, Hayashi H, Miura Y, et al. (2007) Immunological effects of silica and asbestos. Cell Mol Immunol 4: 261-268.
41. Otsuki T, Miura Y, Nishimura Y, Hyodoh F, Takata A, et al. (2006) Alterations of Fas and Fas-related molecules in patients with silicosis. Exp Biol Med (Maywood) 231: 522-533.
42. Kamp DW, Graceffa P, Pryor WA, Weitzman SA (1992) The role of free radicals in asbestos-induced diseases. Free Radic Biol Med 12: 293-315.
43. Jaurand MC (1997) Mechanisms of fiber-induced genotoxicity. Environ Health Perspect 105: 1073-1084.
44. Nagai H, Toyokuni S (2010) Biopersistent fiber-induced inflammation and carcinogenesis: lessons learned from asbestos toward safety of fibrous nanomaterials. Arch Biochem Biophys 502: 1-7.
45. Nagai H, Toyokuni S (2012) Differences and similarities between carbon nanotubes and asbestos fibers during mesothelial carcinogenesis: shedding light on fiber entry mechanism. Cancer Sci 103: 1378-1390.
46. Sekido Y (2008) Molecular biology of malignant mesothelioma. Environ Health Prev Med 13: 65-70.
47. Cheng JQ, Jhanwar SC, Klein WM, Bell DW, Lee WC, et al. (1994) p16 alterations and deletion mapping of 9p21-p22 in malignant mesothelioma. Cancer Res 54: 5547-5551.
48. Bianchi AB, Mitsunaga SI, Cheng JQ, Klein WM, Jhanwar SC, et al. (1995) High frequency of inactivating mutations in the neurofibromatosis type 2 gene (NF2) in primary malignant mesotheliomas. Proc Natl Acad Sci USA 92: 10854-10858.
49. Murakami H, Mizuno T, Taniguchi T, Fujii M, Ishiguro F, et al. (2011) LATS2 is a tumor suppressor gene of malignant mesothelioma. Cancer Res 71: 873-883.
50. Mizuno T, Murakami H, Fujii M, Ishiguro F, Tanaka I, et al. (2012) YAP induces malignant mesothelioma cell proliferation by upregulating transcription of cell cycle-promoting genes. Oncogene 31: 5117-5122.
51. Testa JR, Cheung M, Pei J, Below JE, Tan Y, et al. (2011) Germline BAP1 mutations predispose to malignant mesothelioma. Nat Genet 43: 1022-1025.
52. Bott M, Brevet M, Taylor BS, Shimizu S, Ito T, et al. (2011) The nuclear deubiquitinase BAP1 is commonly inactivated by somatic mutations and 3p21.1 losses in malignant pleural mesothelioma. Nat Genet 43: 668-672.
53. Hyodoh F, Takata-Tomokuni A, Miura Y, Sakaguchi H, Hatayama T, et al. (2005) Inhibitory effects of anti-oxidants on apoptosis of a human polyclonal T-cell line, MT-2, induced by an asbestos, chrysotile-A. Scand J Immunol 61: 442-448.
54. Miyoshi I, Kubonishi I, Yoshimoto S, Akagi T, Ohtsuki Y, et al. (1981) Type C virus particles in a cord T-cell line derived by co-cultivating normal human cord leukocytes and human leukaemic T cells. Nature 294: 770-771.
55. Kohyama N, Shinohara Y, Suzuki Y (1996) Mineral phases and some reexamined characteristics of the International Union Against Cancer standard asbestos samples. Am J Ind Med 30: 515-528.
56. Miura Y, Nishimura Y, Katsuyama H, Maeda M, Hayashi H, et al. (2006) Involvement of IL-10 and Bcl-2 in resistance against an asbestos-induced apoptosis of T cells. Apoptosis 11: 1825-1835.
57. Maeda M, Yamamoto S, Chen Y, Kumagai-Takei N, Hayashi H, et al. (2012) Resistance to asbestos-induced apoptosis with continuous exposure to crocidolite on a human T cell. Sci Total Environ 429: 174-182.
58. Maeda M, Nishimura Y, Hayashi H, Kumagai N, Chen Y, et al. (2011) Reduction of CXCR3 chemokine receptor 3 in an *in vitro* model of continuous exposure to asbestos in a human T-cell line, MT-2. Am J Respir Cell Mol Biol 45: 470-479.
59. Maeda M, Nishimura Y, Hayashi H, Kumagai N, Chen Y, et al. (2011) Decreased CXCR3 expression in CD4+ T cells exposed to asbestos or derived from asbestos-exposed patients. Am J Respir Cell Mol Biol 45: 795-803.
60. Nishimura Y, Miura Y, Maeda M, Kumagai N, Murakami S, et al. (2009) Impairment in cytotoxicity and expression of NK cell-activating receptors on human NK cells following exposure to asbestos fibers. Int J Immunopathol Pharmacol 22: 579-590.
61. Nishimura Y, Maeda M, Kumagai N, Hayashi H, Miura Y, Otsuki T (2009) Decrease in phosphorylation of ERK following decreased expression of NK cell-activating receptors in human NK cell line exposed to asbestos. Int J Immunopathol Pharmacol 22: 879-888.
62. Nishimura Y, Kumagai N, Maeda M, Hayashi H, Fukuoka K, et al. (2011) Suppressive effect of asbestos on cytotoxicity of human NK cells. Int J Immunopathol Pharmacol 24: 5S-10S.
63. Nishimura Y, Maeda M, Kumagai-Takei N, Matsuzaki H, Lee S, et al. (2012) Effect of asbestos on anti-tumor immunity and immunological alteration in patients with malignant mesothelioma. In: Malignant Mesothelioma (Eds: Belli C, Anand S) Tech- Open Access Company, Rijeka, Croatia.
64. Ostroff RM, Mehan MR, Stewart A, Ayers D, Brody EN, et al. (2012) Early detection of malignant pleural mesothelioma in asbestos-exposed individuals with a noninvasive proteomics-based surveillance tool. PLoS One 7: e46091.
65. Matsuzaki H, Maeda M, Lee S, Nishimura Y, Kumagai-Takei N, et al. (2012) Asbestos-induced cellular and molecular alteration of immunocompetent cells and their relationship with chronic inflammation and carcinogenesis. J Biomed Biotechnol 2012:492608.
66. Maeda M, Nishimura Y, Kumagai N, Hayashi H, Hatayama T, et al. (2010) Dysregulation of the immune system caused by silica and asbestos. J Immunotoxicol 7: 268-278.

This article was originally published in a special issue, **Systems Biology: Biomarker Discovery** handled by Editor: Dr. Firas Kobaisy, University of Florida, USA