

EB1 and α Tubulin Dynamics during Metaphase

Margit Fuchs*

Research Assistant, Laboratory Dr. N. Josée Lavoie, Research Center of the Hotel -Dieu de Quebec, 9, rue McMahon, Quebec, Quebec, G1R 2J6, Canada

Clinical Image

HeLa cells were synchronized with a double Thymidine block and fixed after a 7 h release with formaldehyde/Triton at the same time.

Immunofluorescence analysis was performed with antibodies directed against EB1 (green) and α Tubulin (red). Confocal images were acquired at a Spinning disk with 0.5 μ m steps and the deconvolved maximal projection is shown. Magnification: 90x.

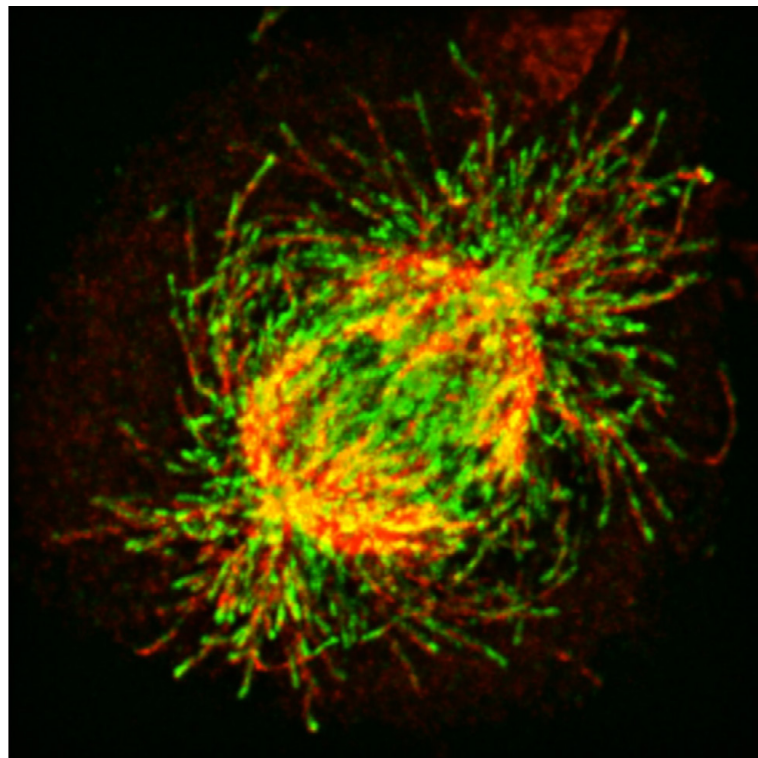


Figure 1: EB1 and α Tubulin dynamics during metaphase.

*Corresponding author: Margit Fuchs, PhD, Research Assistant, Laboratory Dr. N. Josée Lavoie, Research Center of the Hotel -Dieu de Quebec 9, rue McMahon, Quebec, Quebec, G1R 2J6, Canada, Tel: 418-691-5281; Fax: 418-691-5439; E-mail: margit.fuchs@crchuq.ulaval.ca

Received June 09, 2015; Accepted June 12, 2015; Published June 16, 2015

Citation: Fuchs M (2015) EB1 and α Tubulin Dynamics during Metaphase. Single Cell Biol 4: i107. doi:[10.4172/2168-9431.1000i107](https://doi.org/10.4172/2168-9431.1000i107)

Copyright: © 2015 Fuchs M. This is an open-access article distributed under the terms of the Creative Commons Attribution License, which permits unrestricted use, distribution, and reproduction in any medium, provided the original author and source are credited.