



CURRENT CONSERVATION STATUS OF LARGE MAMMALS IN SIME DARBY OIL PALM CONCESSION IN LIBERIA

Jean-Claude Koffi BENE¹, Eloi Anderson BITTY², Kouakou Hilaire BOHOSSOU³, Michael ABEDI-LARTEY⁴, Joel GAMYS⁵ & Prince A. J. SORIBAH⁶

¹UFR Environnement, Université Jean Lorougnon Guédé; BP 150 Daloa.

²Centre Suisse de Recherches Scientifiques en Côte d'Ivoire ; 01 BP 1303 Abidjan 01.

³Laboratoire de Zoologie et Biologie Animale, UFR Biosciences, Université de Cocody; 22 BP 582 Abidjan 22.

⁴University of Konstanz, Schlossallee 2, 78315 Radolfzell, Germany.

⁵Frend of Ecosystems and Environment-Liberia.

⁶CARE Building, Congo Town, Monrovia.

Abstract

The forest ecosystem of Liberia is part from the Upper Guinea Eco-region, and harbors an exceptional biodiversity in a rich mosaic of habitats serving as refuge for numerous endemic species. Unfortunately, many of these forests have been lost rapidly over the past decades, and the remaining are under various forms of anthropogenic pressure, subsistence farming, and large-scale industrial agriculture and mining. As part of a broader survey to generate information for conservation management strategies in the Gross Concession Area in preparation for its oil palm and rubber plantations in western Liberia, Sime Darby (Liberia) Inc., commissioned surveys on large mammals species in 2011. Through a combination of hunter interviews and foot surveys, we documented evidence of 46 and 32, respectively, of large mammals in the area. Fourteen of the confirmed species are fully protected at national level and three are partially protected. At the international level, 15 species are of conservation concern, including Zebra and Jentink's duiker, Diana monkey, Sooty mangabey, Olive colobus, Elephant and Leopard.

Key words: large mammal, conservation status, biodiversity, threatened species, Liberia.

1. Introduction

Three large blocks of equatorial forest exist in the world. These are situated in South America, in Southeast Asia and in Africa. In Africa, the forest block is divided into two sub-blocks separated by the Dahomey Gap: the Guinean Block of West Africa and the Congolese Block of Central Africa. There is no doubt that the Guinean Block is the most directly threatened. This block covers The Upper Guinea forest block, stretching from Guinea, through Sierra Leone, Liberia, Ivory Coast, Ghana to Togo, constitutes one of the very high priority conservation tropical biodiversity hotspots in the world. Due to a combination of anthropogenic factors, it is also one of the most threatened. Currently, the Liberian portion is considered the most important, since it contains the most extensive and relatively intact remaining of the original forest block (Vershuren, 1983).

Liberia is the only West African country thought to have been totally covered in tropical rainforest before the influence of human settlement. Currently, this forest is estimated to cover about 49% of the total landmass of the country. The importance of the Guinean Forests of West Africa (GFWA) ecosystem resulted in its designation by Conservation International (CI, 2007) as one of the world's 35 Hotspots, areas of highest biodiversity richness under the greatest threat. Due to its status as retaining the most intact remaining forest in the hotspot, Liberia's forests are considered the top priority for conservation in West Africa.

However, the once continuous tracts of forests in Liberia, which represent the main sizeable intact forest blocks within the Upper Guinea Forest Region, are now isolated from each other, into two fragmented blocks. There is evergreen forest block in the southeast and a semi-deciduous block in the north-western portions of the country, separated by a distinct transitional zone of disturbed forest vegetation mostly along the Nimba-Monrovia corridor. This division of the Liberian forest blocks is largely due to shifting cultivation and human settlements, which is also compounded by fragmentation from logging and road infrastructure activities. Therefore, Liberia's biodiversity is under severe threat with rapid loss and decimation of species and habitats that are jeopardizing future development of the country. Biodiversity loss in Liberia is of regional concern because Liberia still holds the last remaining two blocks of the Upper Guinea Forest Ecosystem of West Africa. As we well know, most of the biodiversity in this region is held by the forest. So, further significant loss of biodiversity in Liberia would have adverse consequences for conservation of biodiversity in West Africa.

Environmental and social impact assessments have become a prerequisite to the launching of most important development projects in tropical countries, and biological assessments are increasingly becoming a major component of such studies. In addition, as a consequence of massive protests throughout the world, environmental issues are increasingly taken into consideration in the planning and implementation of development projects. The Forestry Development Authority (FDA), created in 1976 to manage Liberia's forest fauna and flora, has actively sought the cooperation of the International Union for Conservation of Nature and Natural Resources (IUCN) and the World Wildlife Fund (WWF) in achieving its mandate.

As part of land management planning for its oil palm and rubber plantation concession in western Liberia, Sime Darby Plantations (Liberia) Incorporated (hereafter called Sime Darby) commissioned an Environmental and Social Assessment (ESA) through Fauna & Flora International (FFI) in November–December 2011. The objective was to characterize the environmental and social conservation baseline of the company's Gross Concession Area (GCA) in order to provide an informed basis for assessment of the expected impacts of its development activities, as required by Liberian and international law.

The status of large mammal populations in tropical forests is viewed as particularly important in the EIAs. Large mammals, notably primates, are particularly sensitive to habitat disturbance (Koné, 2004; Bene *et al.*, 2009) and are invaluable indicators of the conservation status of natural habitats. This study aims at assessing the current status of the large mammals at four sites (concession Block E, Block F, Block G and Block H) in the Gross Concession Area of Sime Darby.

2. Global objectives

This study aimed to document the diversity and conservation status of large mammals of the GCA, and highlight measures for their long term conservation under an intensive industrial agricultural development.

3. Specific objectives

We sought to address the following specific objectives:

- i. Identify and document the large Mammal communities of the study area
- ii. Appropriately describe the current status of large Mammal species with attention to species that are of global conservation significance (species listed on the IUCN Red List of Threatened Species) as well as species protected by national legislation.

4. Methods

4-1- Location of the study zone

Liberia lies at the southwest corner of West Africa, bordered by Sierra Leone to the northwest, Guinea to the northeast, and Côte d'Ivoire to the east. The landscape is dominated by generally flat coastal plains, rising to rolling plateaus and low mountains in the northeast, highest of which is the Nimba range in North Nimba County. Liberia's climate is tropical, with the wet season lasting from approximately April until October. Rainfall varies from about 4080mm at Buchanan on the Coast, to 1918mm at Yekepa.

Bong County is situated roughly at the geographic center of Liberia. The County is drained by six principal rivers and a number of small streams. It is part of the high forest belt, which can be divided into an evergreen rain forest zone and the moist semi-deciduous forest zone. The evergreen forest receives an annual rainfall of 80 inches and consists of species that do not have a marked period of leaf fall. The tallest trees reach 200 feet. The semi-deciduous forest is a transition to the deciduous forest type found in the Ivory Coast.

The densely forested Gbarpolu County occupies an area of approximately 1,263 square miles, and is located in the western region of Liberia. The County has two main mountain ranges, Kpo and Fanyea, and three main river systems. Gbarpolu contains significant portions of the Upper Guinea Forest. Most of this forest is deciduous and mountain in nature, covering all three main forest classes: class 3.1–forest with small agricultural; class 3.2–open dense forest; and class 3.3–closed dense forest.

The concession of Sime Darby covers four counties (Gbarpolu, Bomi, Bong and Grand Cape Mount) see figure 1. Initially, with a total concession area of 311,817 ha the Gbarpolu County with 51% housed the major portion, then Bong and Bomi with 18% each, and finally Grand Cape Mount with 13%. The boundaries of this concession have been revised downward from 311,817 ha to 116,634 ha. This study concern four blocks (F, G and H in Gbarpolu County and block E in Bong County).

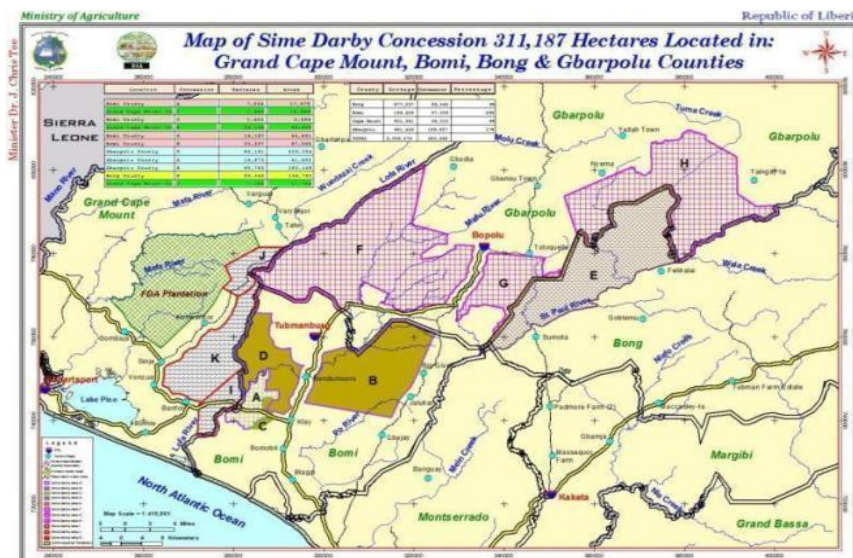


Figure 1. Sime Darby concession location in the four counties

4-2- Sampling

The choice of a survey area in a block was guided by vegetation cover assessment as a proxy for probable habitat suitability (figure 2) and hunter interviews in neighboring communities. The vegetation of block E was mainly forest with open canopy; block F was a forest with high and closed canopy; block G was a forest with open canopy and block H a young forest and farm bush forest. We adopted the following approach in this study : (1) initial town interviews of experienced hunter-informants to obtain general information on animal species that occur in the area, their distribution and population trends; (2) walking in the targeted forest block(s) of potential conservation interest to observe evidence of wildlife, by using mainly hunter trail. Three persons composed one team. One team was composed during the first day and two teams for the other days. In each team one person was concentrated on primate’s evidence and the two other members on ground evidence of animal presence. When a sign of evidence is seen, we record the date, the time; the type of the observation, count the number, determine the species when possible and record the GPS coordinate.

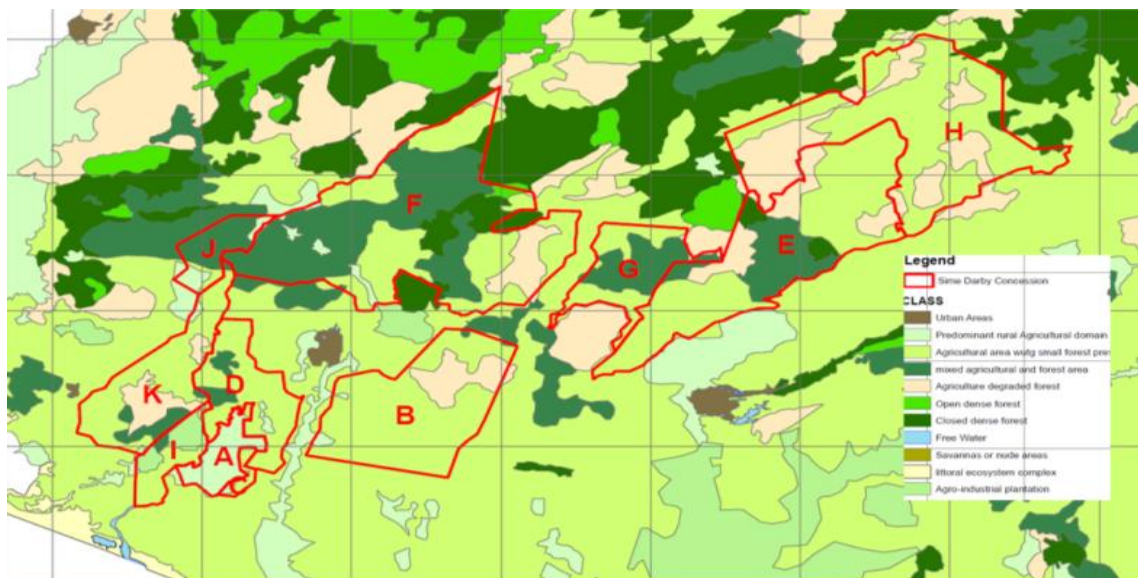


Figure 2. Vegetation covers of Sime Darby different blocks

4-3- Analysis

Species identification was made based on our own knowledge of the area’s fauna, and backed up with the Kingdom Field Guide to African mammals (Kingdom, 2007). We calculated the frequencies of specific encounters of different indices of presence. We used the national (Liberia) conservation status of the new “an act adopting the national wildlife conservation and protected area management law of Liberia” and the following tags (table 1) are used the IUCN and the Red List of Threatened Species 2008 to determine each species' conservation status.

Table 1. IUCN Red list of threatened Species Categories

Abbreviation	Signification	Definition
EX	Extinct	No reasonable doubt that the last individual has died.
EW	Extinct in the wild	Known only to survive in captivity or as a naturalized population well outside its previous range.
CR	Critically Endangered	The species is in imminent risk of extinction in the wild.
EN	Endangered	The species is facing an extremely high risk of extinction in the wild.
VU	Vulnerable	The species is facing a high risk of extinction in the wild.
NT	Near Threatened	The species does not meet any of the criteria that would categorize it as risking extinction but it is likely to do so in the future.
LC	Least Concern	There are no current identifiable risks to the species
LR/cd	Lower Risk/conservation Dependent	Species which were the focus of conservation program and may have moved into a higher risk category if that program was discontinued.
LR/nt	Lower Risk/near Threatened	Species which are close to being classified as Vulnerable but are not the subject of conservation program
LR/lc	Lower Risk/least Concern	Species for which there are no identifiable risks

5. Results

5-1- Presence and encounter rates of large mammals in the four blocks

According to the literature review, 65 large mammal species are likely to live in the study area. Surveys of hunters have identified 46 species of large mammals. Then, the field study confirmed 32 species (table 2). A total of 438 observations of large Mammals signs were made during a total time of 63 hours survey. This gives a frequency of 7 observation / hour. And 33 of these observations are direct sign and represents 8% of all observations that are been made against 405 indirect observations (92%). Direct observations showed a frequency of 0.5 obs/h and were composed of

40% (seen), 30% (call) and 22% of the combination seen/call. The indirect observations have a frequency of 6.4 obs/h and consisted mainly of foot print (75%), feeding site (9%), trail/foot print (7%), trail (4%) and dung (4%).

Table 2. Large Mammal species confirmed in Sime Darby gross concession area

Large Mammal Species according to literature review			Species in Sime Darby Gross Concession	
Order	Scientific name	English name	Conf. hunters	Conf. field survey
Artiodactyla	<i>Cephalophus dorsalis</i>	Bay duiker	X	X
	<i>Tragelaphus scriptus</i>	Bushbuck	X	X
	<i>Cephalophus maxwelli</i>	Maxwell's duiker	X	X
	<i>Boocercus euryceros</i>	Bongo	X	
	<i>Cephalophus zebra</i>	Zebra duiker	X	X
	<i>Cephalophus jentinki</i>	Jentink's duiker	X	X
	<i>Cephalophus ogilbyi</i>	Ogilby's duiker	X	X
	<i>Cephalophus silvicultor</i>	Yellow-backed duiker	X	X
	<i>Cephalophus niger</i>	Black duiker	X	X
	<i>Hyemoschus aquaticus</i>	Water chevrotain	X	X
	<i>Potamochoerus porcus</i>	Red river hog	X	X
	<i>Hylochoerus meinertzhageni</i>	Giant hog	X	
	<i>Hippopotamus amphibius</i>	Hippopotamus	X	
	<i>Hexaprotodon liberiensis</i>	Pygmy hippopotamus		
	<i>Syncerus caffer</i>	African buffalo	X	X
<i>Neotragus pygmaeus</i>	Royal antelope			
Carnivora	<i>Crossarchus obscurus</i>	Cusimanse	X	X
	<i>Herpestes sanguinea</i>	Slender mongoose	X	X
	<i>Herpestes ichneumon</i>	Ichneumon mongoose		
	<i>Mungos gambianus</i>	Gambian mongoose		
	<i>Atilax paludinosus</i>	Marsh mongoose		
	<i>Genetta tigrina</i>	Blotched genet	X	
	<i>Poiana leightoni</i>	west African linsang		
	<i>Felis aurata</i>	Golden cat		
	<i>Panthera pardus</i>	Leopard	X	X
	<i>Mellivora capensis</i>	Ratel	X	
	<i>Aonyx capensis</i>	African clawless otter		
	<i>Lutra maculicollis</i>	Spot-necked otter	X	X
	<i>Nandinia binotata</i>	African palm civet	X	X
<i>Genetta sp</i>	Genet	X	X	
<i>Civettictis civetta</i>	African civet	X	X	
Pholidota	<i>Phataginus tricuspis</i>	Tree pangolin	X	X
	<i>Uromanis tetradactyla</i>	Long-tailed pangolin	X	
	<i>Smutsia gigantea</i>	Giant pangolin	X	
	<i>Dendrohyrax dorsalis</i>	Western tree hyrax	X	
Primates	<i>Galagoides demidovii</i>	Demidoff's Galago	X	
	<i>Galagoides thomasi</i>	Thomas' Galago		

	<i>Perodicticus potto</i>	Bosman's potto	X	
	<i>Cercocebus atys atys</i>	Sooty mangabey	X	X
	<i>Chlorocebus aethiops sabaues</i>	Green Monkey		
	<i>Cercopithecus diana diana</i>	Diana monkey	X	X
	<i>Cercopithecus nictitans stampfii</i>	Stampfi's putty-nosed monkey		
	<i>Procolobus verus</i>	Olive colobus	X	X
	<i>Procolobus badius badius</i>	Western red colobus		
	<i>Colobus polykomos</i>	Western black-and-white colobus	X	
	<i>Cercopithecus petaurista b.</i>	Lesser spot-nose	X	X
	<i>Cercopithecus m. campbelli</i>	Campbell's monkey	X	X
	<i>Pan troglodytes verus</i>	Western chimpanzee	X	
	<i>Anomalurus derbianus</i>	Lord Derby's anomalure		
	<i>Anomalurus peli</i>	Pel's anomalure		
	<i>Anomalurus beecrofti</i>	Beecroft's anomalure	X	X
	<i>Hystrix cristata</i>	Crested porcupine	X	X
	<i>Atherurus africanus africanus</i>	brush-tailed porcupine	X	X
	<i>Thryonomys swinderianus</i>	marsh cane rat	X	X
	<i>Cricetomys emini</i>	Giant pouched rats	X	
Rodentia	<i>Cricetomys gambianus</i>	Giant pouched rats	X	X
	<i>Euxerus erythropus</i>	Striped ground squirrel	X	X
	<i>Protoxerus stangeri</i>	African giant squirrel	X	X
	<i>Heliosciurus rufobrachium</i>	Red-legged sun squirrel	X	
	<i>Funisciurus pyrropus</i>	Fired-footed rope squirrel		
	<i>Paraxerus poensis</i>	green squirrel		
	<i>Heliosciurus gambianus punctatus</i>	Gambian sun squirrel		
	<i>Protoxerus aubinnii</i>	Slender-tailed squirrel		
	<i>Epixerus ebi</i>	Western palm squirrel		
Proboscidea	<i>Loxodonta africana</i>	Elephant	X	X
TOTAL		65	46	32

5-2- Confirmed large mammal species in the four blocks conservation status

We observe that in all of the blocks, 14 out of the 32 Mammal species confirmed are fully protected at national level and three are partially protected. At the international level, a total of 15 (47%) species are of conservation concern according to IUCN Red List of Threatened Species constituted of two Vulnerable Artiodactyla (Zebra and Jentink's duikers), one Vulnerable Primate (Diana monkey) and one Vulnerable Proboscidea (Elephant) (table 3).

Also, five (5) species on this list are Near Threatened (NT) with two Primates (Sooty mangabey and Olive colobus), one Pholidota (Tree pangolin) and two Carnivora (Leopard and African palm civet). In the same list, six others Artiodactyla are listed as Low Risk and Near Threatened or Conservation Dependent: Maxwell's duiker (LR/nt), Black duiker (LR/nt), Bay duiker (LR/nt), Ogilby's duiker (LR/nt), Yellow-backed duiker (LR/nt), African buffalo (LR/cd).

Table 3. Sime Darby gross concession large mammal species conservation status

Order	English name	Scientific name	National status	IUCN Red List
	Maxwell's duiker	<i>Cephalophus maxwelli</i>	Not listed	LR/nt
Artiodactyla	Black duiker	<i>Cephalophus niger</i>	Not listed	LR/nt
	Bay duiker	<i>Cephalophus dorsalis</i>	Not listed	LR/nt
	Bushbuck	<i>Tragelaphus scriptus</i>	Not listed	LR/lc

	African buffalo	<i>Syncerus caffer</i>	Fully protected	LR/cd
	Red river hog	<i>Potamochoerus porcus</i>	Fully protected	LR/lc
	Zebra duiker	<i>Cephalophus zebra</i>	Fully protected	VU
	Ogilby's duiker	<i>Cephalophus ogilbyi</i>	Fully protected	LR/nt
	Yellow-backed duiker	<i>Cephalophus silvicultor</i>	Fully protected	LR/nt
	Jentink's duiker	<i>Cephalophus jentinki</i>	Fully protected	VU
	Water chevrotain	<i>Hemoschus aquaticus</i>	Fully protected	LC
Primates	Sooty mangabey	<i>Cercocebus atys atys</i>	Fully protected	NT
	Campbell's monkey	<i>Cercopithecus m. campbelli</i>	Fully protected	LC
	Lesser spot-nose	<i>Cercopithecus petaurista b.</i>	Fully protected	LC
	Olive colobus	<i>Procolobus verus</i>	Not listed	NT
	Diana monkey	<i>Cercopithecus diana diana</i>	Fully protected	VU
Proboscidae	Elephant	<i>Loxodonta africana</i>	Fully protected	VU
	brush-tailed porcupine	<i>Atherurus africanus africanus</i>	Not listed	LC
	Giant pouched rats	<i>Cricetomys sp</i>	Not listed	LC
	African giant squirrel	<i>Protoxerus stangeri</i>	Not listed	LC
Rodentia	marsh cane rat	<i>Thryonomys swinderianus</i>	Not listed	LC
	Striped ground squirrel	<i>Euxerus erythropus</i>	Not listed	LR/lc
	Beecroft's anomalure	<i>Anomalurus beecrofti</i>	Not listed	LC
	Crested porcupine	<i>Hystrix cristata</i>	Not listed	LC
Pholidota	Tree pangolin	<i>Phataginus tricuspis</i>	Fully protected	NT
	African civet	<i>Civettictis civetta</i>	Partially protected	LR/lc
	Leopard	<i>Panthera pardus</i>	Fully protected	NT
	African palm civet	<i>Nandinia binotata</i>	Partially protected	NT
Carnivora	Spot-necked otter	<i>Lutra maculicollis</i>	Not listed	LC
	Slender mongoose	<i>Herpestes sanguinea</i>	Not listed	LC
	Cusimanse	<i>Crossarchus obscurus</i>	Not listed	LC
	Genet	<i>Genetta sp</i>	Partially protected	LC

5-3- Encounter rates of large mammal species confirmed in the four blocks

During the survey, whatever the method of confirmation of large Mammal species (direct or indirect) in the field, they belong to 6 orders (Artiodactyla, Primates, Proboscidea, Rodentia, Pholidota and Carnivora). The majority of present signs belongs to the order Artiodactyla with 73%, then the Rodentia (11%), Carnivora (6%) and Proboscidea (4%) and finally the order of Pholidota with 1% (Figure 3).

<< Figure 3 >>

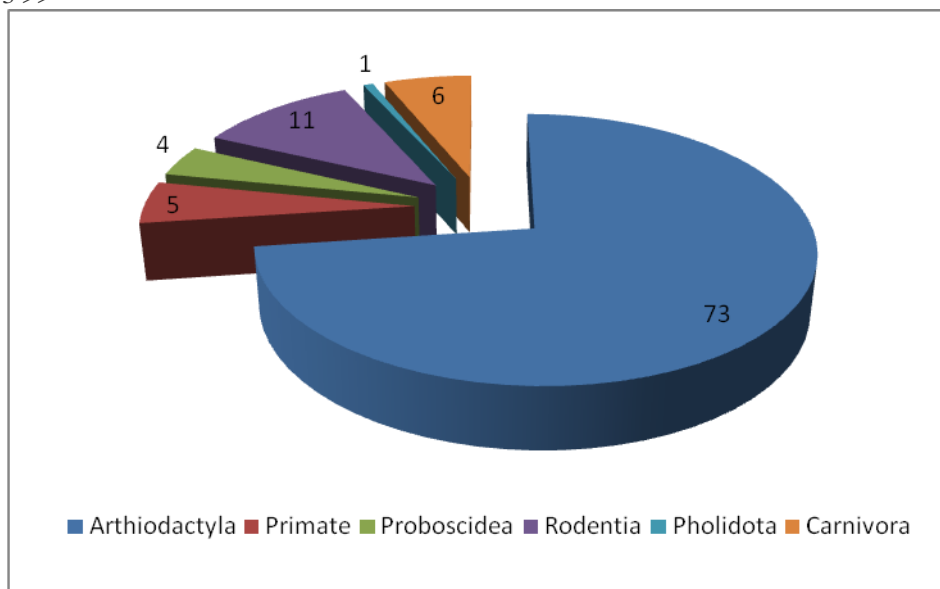


Figure 3. Frequency of the different large Mammal orders confirmed in the Sime Darby concession

The order Artiodactyla is dominated by the Maxwell's duiker and Black duiker, then the Bay duiker, the bushbuck, the African buffalo and the Red river hog. The others Zebra, Ogilby's, Yellow-backed, Jentink's duikers and the Water chevrotain are encountered at lower rate. Primates are represented by Sooty mangabey, Campbell's monkey, Lesser spotted-nosed monkey and Olive colobus. Only one group of Diana monkey was encountered during the survey. The Proboscidea are represented by the Elephant. The Rodentia are dominated by the Brush-tailed porcupine, the Giant pouched rats and the African giant squirrel. Concerning Carnivora, the Cusimanse is the most encountered while the Pholidota is represented by the Tree pangolin (table 4).

Table 4. Encounter rate and frequency of encounter per hour in the four blocks

Order	English name	Scientific name	Observation	Encounter rate	Observ/hour
	Maxwell's duiker	<i>Cephalophus maxwelli</i>	103	0.235	1.63
	Black duiker	<i>Cephalophus niger</i>	96	0.219	1.52
	Bay duiker	<i>Cephalophus dorsalis</i>	41	0.094	0.65
	Bushbuck	<i>Tragelaphus scriptus</i>	25	0.57	0.40
	African buffalo	<i>Syncerus caffer</i>	22	0.050	0.35
Artiodactyla	Red river hog	<i>Potamochoerus porcus</i>	15	0.034	0.24
	Zebra duiker	<i>Cephalophus zebra</i>	8	0.018	0.13
	Ogilby's duiker	<i>Cephalophus ogilbyi</i>	4	0.009	0.06
	Yellow-backed duiker	<i>Cephalophus silvicultor</i>	3	0.007	0.05
	Jentink's duiker	<i>Cephalophus jentinki</i>	1	0.002	0.02
	Water chevrotain	<i>Hiemoschus aquaticus</i>	1	0.002	0.02
	Sooty mangabey	<i>Cercocebus atys atys</i>	8	0.018	0.13
Primates	Campbell's monkey	<i>Cercopithecus m. campbelli</i>	7	0.016	0.11
	Lesser spot-nose	<i>Cercopithecus petaurista b.</i>	5	0.011	0.08

	Olive colobus	<i>Procolobus verus</i>	2	0.005	0.03
	Diana monkey	<i>Cercopithecus diana</i>	1	0.002	0.02
Proboscidae	Elephant	<i>Loxodonta africana</i>	17	0.039	0.27
	brush-tailed porcupine	<i>Atherurus africanus africanus</i>	32	0.073	0.51
	Giant pouched rats	<i>Cricetomys sp</i>	8	0.018	0.13
	African giant squirrel	<i>Protoxerus stangeri</i>	4	0.009	0.06
Rodentia	marsh cane rat	<i>Thryonomys swinderianus</i>	2	0.005	0.03
	Striped ground squirrel	<i>Euxerus erythropus</i>	2	0.005	0.03
	Beecroft's anomalure	<i>Anomalurus beecrofti</i>	1	0.002	0.02
	Crested porcupine	<i>Hystrix cristata</i>	1	0.002	0.02
Pholidota	Tree pangolin	<i>Phataginus tricuspis</i>	2	0.005	0.03
	African civet	<i>Civettictis civetta</i>	2	0.005	0.03
	Leopard	<i>Panthera pardus</i>	1	0.002	0.02
	African palm civet	<i>Nandinia binotata</i>	1	0.002	0.02
Carnivora	Spot-necked otter	<i>Lutra maculicollis</i>	3	0.007	0.05
	Slender mongoose	<i>Herpestes sanguinea</i>	1	0.002	0.02
	Cusimanse	<i>Crossarchus obscurus</i>	17	0.039	0.27
	Genet	<i>Genetta sp</i>	2	0.005	0.03
TOTAL			32	438	6.95

6. Discussion

The diversity and frequency of large mammals recorded during the present survey is high compared to results from other surveys in Guinea, Côte d'Ivoire, and Ghana (Struhsaker and Bakarr, 1999; Barrie and Kante, 2004; Herbinger and Tounkara, 2004; Sanderson and Trolle, 2005; Barrie and Aalangdong, 2005). Despite of the relative shortness of this survey, we found many species of conservation concern in an appreciable numbers, among which were three Primates (*Cercocebus atys atys*, *Cercopithecus Diana diana* and *Procolobus verus*) and six other large Mammal species (*Cephalophus jentinki*, *C. niger*, *C. silvicultor*, *C. dorsalis*, *C. maxwelli* and *Panthera pardus*). Even if we did not confirm the presence of the Chimpanzee (*Pan troglodytes verus*) during the field survey, all the hunters interviewed have mentioned its presence in all the study area. This offers hope for the future of large Mammal species in Liberia.

However, the blocks in which these species live is intended to be transformed into oil palm plantation in a few time and their long-term survival become problematic. These forests and its fauna are already threatened by human actions including commercial logging, traditional mining, agricultural activities and hunting activity. Current distribution patterns of most large mammals and observed human activities in other areas in Liberia reflect these increasing pressures. Logging occurs in many countries in West Africa and has been cited as the primary cause of habitat destruction in Sierra Leone (Bakarr *et al.*, 2001). Before the war, Liberia was a major source of timber and this has caused, and will continue to cause, forest fragmentation and the subsequent loss of large Mammals. The Liberian civil conflict also negatively impacted upon large Mammals as most of the forests were abandoned by government authorities and plundered by rebels engaged in illegal mining and logging. Secondary impacts of resource extraction such as roads and trails are equally destructive to the forest. Logging roads create easy access for hunters (and others) into areas that were otherwise not penetrable (Sayer *et al.*, 1992; Wilkie *et al.*, 1992; Oates, 1999).

Local communities cause additional habitat degradation by establishing farms and hunting when roads make the deeper forest accessible. The roads and trails fragment the forest reducing the area for wildlife. Collateral damage from logged trees was extensive and many untargeted trees had been damaged. The companies' workers often support

themselves and their families on bushmeat, consume trees for fuel wood and clear areas to plant crops. In addition, the increase in human population due to implementation of a company is accelerating the conversion of remaining forest habitats into human-dominated settlements and agricultural landscapes.

As the human population grows, bushmeat markets develop and the targets are mainly large mammals (Ungulates, Primates, Carnivores and some Rodents). Species most preferred by hunters include antelopes, forest pigs, and primates, while smaller species like the Cane Rat *Thryonomys swinderianus* and Giant Rat *Cricetomys spp.* are taken opportunistically (Eves and Bakarr, 2001). One of the consequences is the scarcity of some Primates species in much of West Africa as a result of unregulated exploitation, habitat loss and the increasing demand for bushmeat (Davies, 1987; McGraw, 1998; Grubb *et al.*, 1998; Davies and Hoffmann, 2002; Bene *et al.*, 2009; Gonedele-Bi *et al.*, 2009). Populations of forest-dependent animals have been reduced to such low levels that a number of them can no longer be considered viable. Large mammals are become the first to be eliminated from forest areas. As in most other countries in West and Central Africa, people in Liberia have always hunted and relied on bushmeat to provide them with protein (Anstey, 1991; Bene and Dufour, 2011).

The bushmeat trade is a lucrative business in Liberia, as in other parts of Africa (Oates, 1986; Barrie and Kante, 2004; Sanderson and Trolle, 2005; Barrie and Aalandong, 2005; Bene and Dufour, 2011). The apparent extinction of Miss Waldron's Red Colobus *Ptilocolobus badius waldroni* has been attributed to hunting and the demand for bushmeat (Oates *et al.*, 2000). West African Chimpanzees are the most threatened of the three subspecies mainly due to habitat loss, high hunting pressure and the pet trade (Kormos and Boesch, 2003). The lack of law enforcement is often a major problem, but the "an act adopting the national wildlife conservation and protected area management law of Liberia" will solve many of these problems if it properly applied.

Biological Diversity involves every facet of our lives. Economic development, health and well being, cultural and social benefits, which are the foundations of sustainable development, all depend on biological diversity. Activities of man over the centuries have re-shaped the diversity of species, genes and ecosystems, to the extent that it is generally agreed that the earth has lost tremendous amount of biological diversity over time. For Liberia, biological diversity has declined significantly over the years, and the country has lost many species, while most of its ecosystems have been degraded significantly (BIOPA report, 2009).

In addition, there has been very slow progress in the establishment of protected areas in Liberia. No protected area has been seen around the study zone. The first protected area of the country, Sapo National Park, was proclaimed in 1983, and two additional areas (Mount Nimba Nature Reserve and East Nimba National Park) were declared by the Government in October, 2003. Conservation of Biodiversity in Liberia is increasingly hampered by several threats to the very biodiversity. The threat to Liberia's biodiversity is due to several factors, such as the absence of some basic data. The threats include also population pressure, especially due to the movement of displaced people and refugees, who use biological resources for food, shelter and energy. The method of farming (shifting cultivation), poaching and hunting, in association with unregulated timber extraction continue to threaten biodiversity. Other threats include soil erosion, mining, firewood gathering, charcoal production, invasive species, inappropriate use of agrochemicals, ignorance, lack of or insufficient public education and awareness.

The Liberian government should, through the FDA, require mining or farm companies more actions in favor of biodiversity conservation in general and large mammal in particular. In terms of this specific study area, special measures such as creating in the concession of Sime Darby a space for the conservation of wildlife of conservation concern, should be required. Corridor could be created and managed to allow a species to survive by joining surrounding protected or community forest. Awareness campaigns among local populations should be initiated for a participatory conservation of these species.

7. Acknowledgement

This paper is the product of collaborative work involving members of the Forest Development Authority of Liberia (FDA), Fauna and Flora International - Liberia (FFI) and communities from Gbarpolu and Bong Counties. We would like to acknowledge the special contributions of these communities, organizations and individuals involved for their cooperation in the successful completion of this large mammals study in the four blocks of Sime Darby concession areas in these Counties. We also wish to thank Sime Darby - Liberia (SD), the funder and commissioner of this initiative. We would like to thank FFI for its role in coordination and facilitation efforts.

8. References

- Anstey S (1991). Wildlife utilization in Liberia. World Wildlife Found and Liberian Forestry Department Authority, Gland, Switzerland.
- Bakarr, M.I., Da Fonseca, G.A.B., Mittermeier, R.A., Rylands, A.B. and Walker, P.K. (eds.) (2001). Hunting and Bushmeat Utilization in the African Rain Forest: Perspectives toward a Blueprint for Conservation Action. *Advances in Applied Biodiversity Science 2*. Center for Applied Biodiversity Science, Conservation International. Washington, DC.
- Barrie, A. and Aalangdong, O.I. (2005). Rapid assessment of large mammals at Draw River, Boi-Tano and Krokosua Hills. In: McCullough J., Decher, J. and Guba Kpelle, D. (eds.). A Biological Assessment of the Terrestrial Ecosystems of the Draw River, Boi-Tano, Tano Nimiri and Krokosua Hills Forest Reserves, Southwestern Ghana. *RAP Bulletin of Biological Assessment 36*. Conservation International. Washington, DC. pp. 67–72.
- Barrie, A. and Kante, S. (2004). A rapid survey of the large mammals of the Forêt Classée du Pic de Fon, Guinea. In: McCullough J. (eds.). A Rapid Biological Assessment of the Forêt Classée du Pic de Fon, Simandou Range, South-eastern Republic of Guinea. *RAP Bulletin of Biological Assessment 35*. Conservation International. Washington, DC. pp. 84–90.
- Bene, J-C.K., Koné, I., Tuagben, D.S. and Sayeh, B. (2009). Preliminary assessment of the primate communities in three sites of the Nimba County, eastern Liberia, *synthetic report for BIOPA*, p: 47-65.

- Bene, J-C.K. and Dufour, S. (2011). Bushmeat survey in the northern Nimba County, Liberia. *Report for Conservation International & Arcelor Mittal Liberia*, 155pp.
- CI (2007). Liberia western deposits: desk-based baseline ecological assessment, 86pp.
- BIOPA report (2009). *Nimba County (Liberia) Biodiversity Preliminary Assessment – BIOPA, June 2008 and January 2009; FINAL REPORT*, 284pp.
- Davies, A.G. (1987). Conservation of primates in the Gola Forest reserves, Sierra Leone. *Primate Conservation* 8: 151–153.
- Davies, G. and Hoffmann, M. (eds.) (2002). African Forest Biodiversity. A Field Survey Manual for Vertebrates. Earthwatch Europe. UK.
- Eves, H.E. and Bakarr, M.I. (2001). Impacts of bushmeat hunting on wildlife populations in West Africa's Upper Guinea Forest Ecosystem. In: Bakarr, M.I., G.A.B. da Fonseca, R. Mittermeier, A.B. Rylands and K.W. Painemilla (eds.). *Hunting and Bushmeat Utilization in the African Rain Forest: Perspectives toward a Blueprint for Conservation Action*. Advances in Applied Biodiversity Science 2. Conservation International, Washington, DC. pp. 39–57.
- Gonedelé-Bi S., Bené, J-C.K., Bitty, E.A., Koné, I. and Zinner, D. (2009). Distribution of the Green Monkey (*Chlorocebus sabaeus*) in the Coastal Zone of Côte d'Ivoire. *Primate Conservation* 24: 91-97.
- Grubb, P., Jones, T.S., Davies, A.G., Edberg, E., Starin, E.D. and Hill, J.E. (1998). Mammals of Ghana, Sierra Leone and The Gambia. The Tendirine Press. Zennor, St Ives.
- Herbinger, I. and Tounkara, E.O. (2004). A rapid survey of primates in the Forêt Classée du Pic de Fon, Guinea. In: McCullough, J. (ed.). *A Rapid Biological Assessment of the Forêt Classée du Pic de Fon, Simandou Range, South-eastern Republic of Guinea*. RAP Bulletin of Biological Assessment 35. Conservation International. Washington, DC. pp. 91–99.
- IUCN (2008). IUCN the Red List of Threatened Species 2008.
- Kingdon, J. (1997). *The Kingdon Field Guide to African Mammals*. Academic Press, London, 458pp.
- Koné, I. (2004). Effet du braconnage sur quelques aspects du comportement du colobe bai – *Procolobus [Piliocolobus] badius* (Kerr) - et du cercopithèque diane – *Cercopithecus diana diana* (L.) - dans le Parc National de Taï, Côte d'Ivoire. *Tropenbos Côte-d'Ivoire series 4*, Wageningen, Abidjan. 112 pp.
- Kormos, R. and Boesch, C. (2003). *Regional Action Plan for the Conservation of Chimpanzees in West Africa*. Washington DC: Center for Applied Biodiversity Science at Conservation International, 28pp.
- McGraw, W.S. (1998). Comparative locomotion and habitat use of six monkeys in the Tai Forest, Ivory Coast. *Am. J. Phys. Anth.* 105 (4) : 493-510.
- Oates, J.F. (1986). *Action Plan for African Primate Conservation 1986 –1990*. IUCN/SSC Primate Specialist Group. New York, 41pp.
- Oates, J.F. (1999). *Myth and Reality in the Rainforest: How Conservation Strategies are Failing in Africa*. University of California Press. Berkeley.
- Oates, J.F., Abedi-Lartey, M., McGraw, M.S., Struhsacker, T.T. and Whitesides, G.H. (2000). Extinction of a West African red colobus monkey. *Conserv. Biol.* 14: 1526–1532.
- Sanderson, J. and Trolle, M. (2005). Monitoring elusive mammals. Unattended camera reveals secrets of some of the world's wildest places. *Amer. Scient.* 93: 148–155.
- Sayer, J.A., Harcourt, C.S. and Collins, N.M. (eds.) (1992). *The Conservation Atlas of Tropical Forests. Africa*. Simon and Schuster. New York.
- Struhsaker, T.T. and Bakarr, M.I. (1999). A rapid survey of primates and other large mammals in Parc National de la Marahoué, Côte d'Ivoire. In: Schulenberg, T.S., Short, C.A. and Stephenson, P.J. (eds.) *A Biological Assessment of Parc National de la Marahoué*. RAP Working Papers 13, Conservation International. Washington, DC. pp. 50–53.
- Verschuren, J. (1983). *Conservation of tropical rain forest in Liberia. Recommendations for wildlife conservation and National parks*, IUCN / WWF report, 78pp.
- Wilkie, D.S., Sidle, J.G. and Boundzanga, G.C. (1992). Mechanised logging, market hunting, and a bank loan in Congo. *Conservation Biology* 6: 570–580.