

Clinical/Medical Image

Open Access

Conservative Surgical Treatment of a Peri-Implant Defect with Open Flap Debridement with a Rotating Titanium Brush: A Case Report of a 2 Year Follow-Up

Pilloni A, Rossi R* and Zeza B

Department of Periodontology, University of Rome 'Sapienza', Genova, GE 16121, Italy

Case

A non-smoker male patient of 40 years old, sistemically and periodontally healthy, presented with an implant inserted 3 years ago showing bone loss and bleeding on probing. An open flap approach with removal of granulation tissue and debridement implant surface has been performed with a titanium rotating brush (Peribrush, Tigran, Sweden). In the SPT the patient has shown an excellent plaque control at each subsequent recall visits up to 24 months with a total plaque score of 10% and absence of BOP around the fixture.

Follow-up	Clinical parameters	mb	b	db	dp	p	mp
baseline	Plaque (+/-)	+	-	+	-	-	+
12 months	Plaque (+/-)	-	-	-	-	-	-
24 months	Plaque (+/-)	-	-	-	-	-	-
baseline	BoP(0-3)	0	1	0	0	1	1
12 months	BoP(0-3)	0	0	0	0	0	0
24 months	BoP(0-3)	0	0	0	1	0	0
baseline	PPD (mm)	2	5	7	7	6	9
12 months	PPD (mm)	2	3	4	3	3	4
24 months	PPD (mm)	2	3	4	2	2	4

Table 1: Clinical parameters measured at baseline, 12 months and 24 months.



Figure 1: Pre-operative clinical image of the implant with a buccal probing depth of 5 mm.

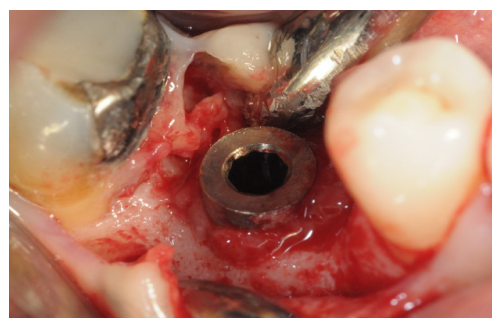


Figure 2: Full-thickness flap elevation. Presence of granulation tissue around the implant neck.



Figure 3: Bone defect and implant surface after the use of titanium peri-brush.

***Corresponding author:** Roberto Rossi, Associate Professor, Department of Periodontology, University of Rome 'Sapienza', Torre San Vincenzo 2, Genova, GE 16121, Italy, Tel: +390105958853; E-mail: drrossi@perio.org

Received July 14, 2014; **Accepted** July 17, 2014; **Published** July 19, 2014

Citation: Pilloni A, Rossi R, Zeza B (2014) Conservative Surgical Treatment of a Peri-Implant Defect with Open Flap Debridement with a Rotating Titanium Brush: A Case Report of a 2 Year Follow-Up. Dentistry 4: i101. doi:[10.4172/2161-1122.1000i101](https://doi.org/10.4172/2161-1122.1000i101)

Copyright: © 2014 Pilloni A, et al. This is an open-access article distributed under the terms of the Creative Commons Attribution License, which permits unrestricted use, distribution, and reproduction in any medium, provided the original author and source are credited.



Figure 4: Interrupted suture in place.



Figure 7: Pre-operative radiographic image of the implant with evidence of marginal bone loss.



Figure 5: Clinical image of the implant tissues at 1 year after surgery.

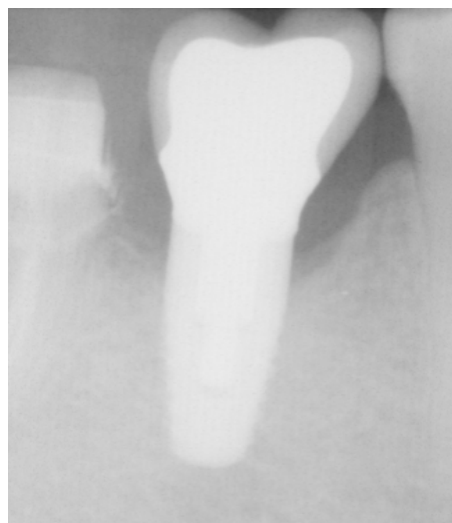


Figure 8: Periapical x-ray at 6 months after the surgery. Partial remineralization occurring at the coronal portion of fixture.



Figure 6: Clinical image of peri-implant tissues at 24 months after surgery.

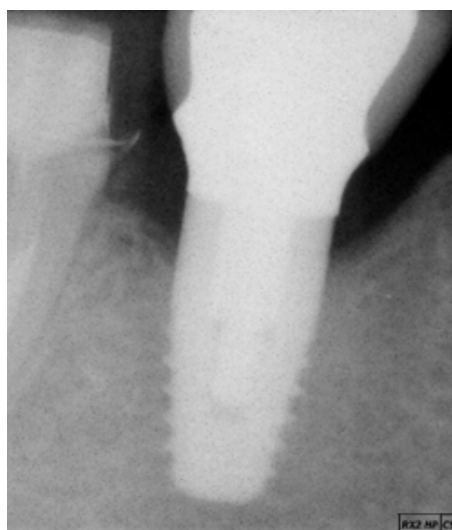


Figure 9: Radiographic image of the implant 12 months after surgery.

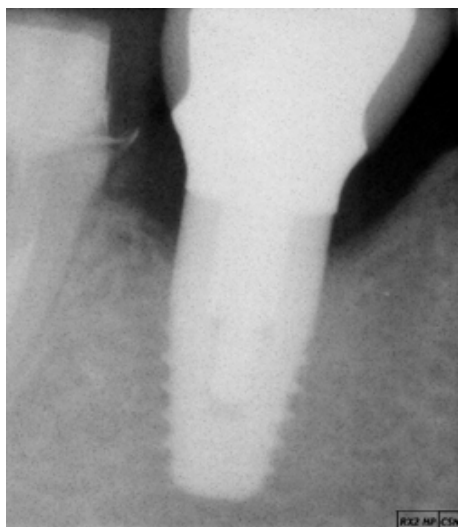


Figure 10: X-ray of implant at 24 months after surgery with further coronal growth of bone and formation of lamina dura.