

Chromosome Alignment at Metaphase Plate

Margit Fuchs*

Laboratory Dr. N. Josée Lavoie, Research Center of the Hotel -Dieu de Quebec 9, rue McMahon, Quebec, Quebec, Canada, G1R 2J6

Clinical Image

HeLa cells were synchronized with a double Thymidine block and fixed after a 7 h release with formaldehyde/Triton at the same time.

Immunofluorescence analysis was performed with a serum against CREST to visualize the kinetochores (green) and an antibody directed against α Tubulin (red). Confocal images were acquired at a Spinning disk and maximal projection is shown. Magnification: 90x

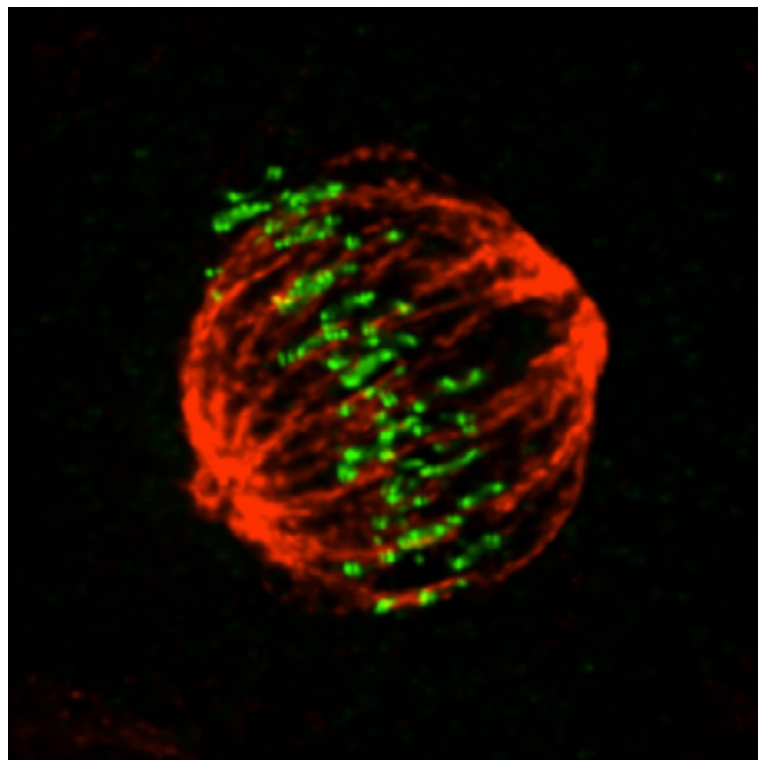


Figure 1: Metaphase.

*Corresponding author: Margit Fuchs, PhD, Research Assistant, Laboratory Dr. N. Josée Lavoie, Research Center of the Hotel -Dieu de Quebec 9, rue McMahon, Quebec, Quebec, Canada, G1R 2J6, Tel: 418-691-5281; Fax: 418-691-5439; E-mail: margit.fuchs@crchuq.ulaval.c

aReceived June 09, 2015; Accepted June 12, 2015; Published June 16, 2015

Citation: Fuchs M (2015) Chromosome Alignment at Metaphase Plate. Single Cell Biol 4: i108. doi:10.4172/2168-9431.1000i108

Copyright: © 2015 Fuchs M. This is an open-access article distributed under the terms of the Creative Commons Attribution License, which permits unrestricted use, distribution, and reproduction in any medium, provided the original author and source are credited.