

Bioavailability of Oral Hydrocortisone Corrected for Binding Proteins and Measured by LC-MS/MS Using Serum Cortisol and Salivary Cortisone

Johnson TN¹, Whitaker MJ², Keevil B³ and Ross RJ^{2*}

¹SimCyp, Sheffield, United Kingdom

²Faculty of Medicine, Dentistry and Health, The University of Sheffield, Sheffield, United Kingdom

³Manchester Academic Health Science Centre (MAHSC), The University of Manchester, Core Technology Facility, 46 Grafton Street, Manchester, M13 9NT, United Kingdom

Abstract

Context: The assessment absolute bioavailability of oral hydrocortisone is complicated by its saturable binding to cortisol binding globulin (CBG). Previous assessment of bioavailability used a cortisol radioimmunoassay which has cross reactivity with other steroids. Salivary cortisone is a measure of free cortisol and LC-MS/MS is the gold standard method for measuring steroids. We here report the absolute bioavailability of hydrocortisone calculated using serum cortisol and salivary cortisone measured by LC-MS/MS.

Methods: 14 healthy male dexamethasone suppressed volunteers were administered 20 mg hydrocortisone either intravenously or orally by tablet. Samples of serum and saliva were taken and measured for cortisol and cortisone by LC-MS/MS. Serum cortisol was corrected for saturable binding using published data and pharmacokinetic parameters derived using the program WinNonlin.

Results: The mean (95% CI) bioavailability of oral hydrocortisone calculated from serum cortisol, unbound serum cortisol and salivary cortisone was 1.00 (0.89-1.14); 0.88 (0.75-1.05); and 0.93 (0.83-1.05), respectively.

Conclusion: The data confirm that, after oral administration, hydrocortisone is completely absorbed. The data derived from serum cortisol corrected for protein binding, and that from salivary cortisone, are similar supporting the concept that salivary cortisone reflects serum free cortisol levels and that salivary cortisone can be used as a non-invasive method for measuring the pharmacokinetics of hydrocortisone.

Keywords: Bioavailability; Hydrocortisone; Cortisol; Cortisone; Saliva

Introduction

The assessment of bioavailability of oral hydrocortisone is complicated by its saturable binding in the therapeutic range to cortisol binding globulin (CBG). Ninety percent of serum cortisol circulates bound to cortisol binding globulin, 5% to generic binding proteins, such as albumin and α -1 glycoprotein, and only 5% is unbound or 'free' [1]. CBG has high affinity for cortisol but lower capacity whereas albumin has a lower affinity and higher capacity and Lentjes and Romijn published Data from which free unbound cortisol could be calculated [2]. An increase in the free fraction results in an increase in clearance with dose and therefore less than dose proportional increases in C_{max} and bioavailability as measured by area under the curve (AUC) [3]. The only previous study of hydrocortisone bioavailability reported absolute bioavailability to be 0.96 (CI 0.82 to 1.09) [3], but used a radioimmunoassay to measure cortisol. Immunoassays have been shown to give variable results depending on the specificity and sensitivity of the antibody used and LC-MS/MS is now the gold standard method for measuring steroids [4].

The measurement of steroid hormones in saliva provides a non-invasive method for assessing free steroid. Free cortisol is converted to cortisone by 11 β hydroxy-steroid dehydrogenase (11 β HSD) type 2 which is highly expressed in salivary glands [5]. In serum, cortisol levels exceed cortisone and the ratio of cortisol to cortisone is approximately 4:1 [6]. Free cortisol diffuses into saliva where it is rapidly converted to cortisone as the salivary glands have a high level of 11 β HSD type 2. Thus, in saliva, the ratio of cortisol to cortisone is reversed compared to serum, with >4:1 salivary cortisone to cortisol [6]. Salivary cortisol and cortisone both show a close relationship to serum cortisol and serum free cortisol [6,7]. Ninety-four percent of the variation in serum cortisol

is predicted from changes in salivary cortisone, salivary cortisone shows a closer relationship to serum cortisol than salivary cortisol, salivary cortisone is detectable at low levels of serum cortisol and can be measured in saliva without interference from oral hydrocortisone [6].

Here we report, for the first time, absolute bioavailability of oral hydrocortisone measured using LC-MS/MS and a comparison of bioavailability derived from: total serum cortisol; calculated free serum cortisol; and salivary cortisone.

Methods

Fourteen healthy male subjects with a median (IQR) age of 28 (25-36) yrs, weight 83 (75-90) kg and BMI 25.3 (23.1-26.3) kg/m² participated in the study as previously reported [6]. The study was approved by the South-East Wales Research Ethics Committee and all the subjects have given written informed consent. Each subject was administered 20 mg oral hydrocortisone and 20 mg IV at 07:00 h in random order. Serum samples for cortisol and salivary samples for cortisol and cortisone were taken at - 10 min, 15 min, 30 min, 45 min, 60 min, 1 h 15 min, 1 h 30 min, 2 h, 2 h 30 min, 3 h, 4 h, 5 h, 6 h, 8 h, 10

***Corresponding author:** Ross RJ, Faculty of Medicine, Dentistry and Health, The University of Sheffield, Sheffield, United Kingdom, Tel: + 44 (0) 114 271 1634; E-mail: r.j.ross@sheffield.ac.uk

Received November 15, 2017; **Accepted** November 23, 2017; **Published** December 04, 2017

Citation: Johnson TN, Whitaker MJ, Keevil B, Ross RJ (2018) Bioavailability of Oral Hydrocortisone Corrected for Binding Proteins and Measured by LC-MS/MS Using Serum Cortisol and Salivary Cortisone. J Bioequiv Availab 10: 001-003. doi: [10.4172/jbb.1000365](https://doi.org/10.4172/jbb.1000365)

Copyright: © 2018 Johnson TN, et al. This is an open-access article distributed under the terms of the Creative Commons Attribution License, which permits unrestricted use, distribution, and reproduction in any medium, provided the original author and source are credited.

h and 12 h. Subjects received dexamethasone 1 mg orally at ~2200 h on Day 1 and at ~0600 h and ~1200 h on Day 2 during each study period to suppress the hypothalamic-pituitary-adrenal axis. All volunteers were given a standard mixed meal on Day 1 at 1900 h and on Day 2 at 0800 h and 1300 h.

Assays: LC-MS/MS analysis for serum, free and salivary cortisol/cortisone was performed using a Waters Xevo TQ-MSTM mass spectrometer and a Waters AcquityTM LC system with an electrospray source operated in positive ionisation mode [8]. The lower limit of quantitation (LLOQ) for serum cortisol was 12.5 nmol/L. The inter-assay imprecision was 8%, 7% and 6% at concentrations of 80 nmol/L, 480 nmol/L and 842 nmol/L respectively. Salivary cortisol and cortisone were measured with a modified LC-MS/MS assay with lower limits of detection 0.80 nmol/L (salivary cortisol) and 0.50 nmol/L (salivary cortisone). Intra-assay coefficient of variation (CV)s were less than 9.3% and less than 7.9%; and inter-assay CVs were less than 9.7% and less than 10.3% at 1.8 nmol/L to 52.2 nmol/L of salivary cortisol and 3.6 nmol/L to 96 nmol/L of salivary cortisone, respectively [9].

Data analysis

For the calculation of pharmacokinetic (PK) end-points, serum cortisol and salivary cortisol & cortisone concentrations below the limit of quantification (BLQ) were assigned a value of zero. Total serum cortisol and salivary cortisone concentrations following either IV or oral hydrocortisone were adjusted by subtracting the ~ 10-min (min) sample, any adjusted values that were less than zero were set to zero. Serum cortisol was corrected for saturable binding using published data [2] to give an estimate of unbound serum cortisol (note in the design of the original study no plans were made to measure unbound plasma cortisol). Briefly, this was achieved by extracting and plotting data on free fraction with plasma cortisol and deriving a polynomial function to describe the fraction unbound (f_u) at different plasma cortisol concentrations. For each total plasma cortisol concentration, the corresponding f_u was calculated and used to derive the unbound plasma cortisol concentration. The PK end-points, C_{max} , AUC_{0-inf} , T_{max}

were derived from the individual total serum cortisol, unbound serum cortisol or salivary cortisone concentration-time data over 0-12 h using Non-compartmental analysis in WinNonlin Phoenix 32. In the case of a deviation from the theoretical time, the actual time of blood sample was used in the calculation. Any individual treatment profiles from subjects where the pre-dose cortisol demonstrates inadequate suppression were excluded.

Bioavailability for each individual was calculated from the IV and oral AUC_{0-inf} values using logarithmic transformation data, analysed using a fixed effects general linear model accounting for sequence and treatment. The geometric mean and 95% confidence interval around the geometric mean were calculated for bioavailability for each of total serum cortisol, unbound serum cortisol and salivary cortisone values.

Results

The concentration-time profiles of serum cortisol, calculated unbound free serum cortisol and salivary cortisone are presented in the Figure 1 and the results from the pharmacokinetic analysis showing key parameters and variability in Table 1. The profiles for all three measures of cortisol were similar and the time of C_{max} was the same for salivary cortisone as for serum cortisol. As would be expected the C_{max} for IV is greater than that of oral hydrocortisone. Examining the variability in terms of CV% around each set of data in terms of AUC_{0-inf} most variability is seen for the calculated unbound serum cortisol (46% iv, 50% oral) and least for salivary cortisone (22% IV, 20% oral), similar results were seen for the C_{max} . The absolute bioavailability of hydrocortisone was not statistically different for the three methods of measurement but for the calculated unbound and salivary cortisone the absolute bioavailability was <100% (88% and 93%, respectively) whereas for total serum cortisol it was 100%.

Discussion

We have shown that oral hydrocortisone is completely absorbed with an absolute bioavailability of 100% when calculated from total

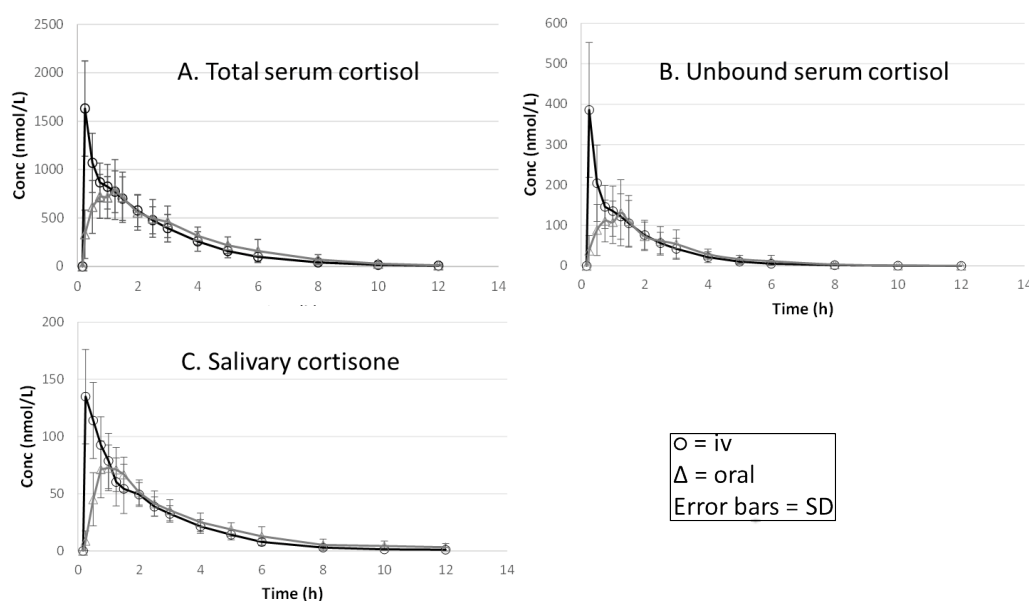


Figure 1: Pharmacokinetic figures for: **A.** Total serum cortisol; **B.** Calculated unbound serum cortisol; **C.** Salivary cortisone following oral or IV administration of 20 mg hydrocortisone.

Route	Measure	AUC _{0-inf} (nmol/L.h) Mean ± SD	C _{max} (nmol/L) Mean ± SD	T _{max} (h) Median and range	Bioavailability GeoMean and CI GM
IV	Total serum cortisol	2900 ± 926	1629 ± 491		
Oral	Total serum cortisol	2779 ± 1058	880 ± 302	1.125 (0.5-1.5)	1.0 (0.89-1.14)
IV	Unbound serum cortisol	391 ± 182	386 ± 167		
Oral	Unbound serum cortisol	391 ± 165	153 ± 81	1.125 (0.5-1.5)	0.88 (0.75-1.05)
IV	Salivary Cortisone	258 ± 58	142 ± 22		
Oral	Salivary Cortisone	239 ± 48	88 ± 17	1.0 (0.75-1.5)	0.93 (0.83-1.05)

Table 1: Pharmacokinetic parameters derived from measurement of serum cortisol, calculated unbound serum cortisol and salivary cortisone following oral and iv administration of 20 mg hydrocortisone.

serum cortisol and is not statistically different from 100% when calculated using unbound serum cortisol or salivary cortisone. The results using LC-MS/MS in our study confirm those previously published by Derendorf et al., who determined a bioavailability of $96 \pm 20\%$ using a radioimmunoassay [3]. The mean total plasma AUC of 1009 ± 383 ng/ml·h, C_{max} of 319 ± 109 ng/ml and median T_{max} of 1.125 h (0.5-1.5 h) from this study was similar to that reported by Derendorf et al of 1163 ng/ml·h, 305 ± 57 ng/ml, and 1.2 h (0.4-2 h) respectively, following a 20 mg oral dose. The results for C_{max} and T_{max} for 20 mg hydrocortisone are also in agreement with other previously published studies showing a range of 225-285 ng/ml after 1-1.4 h [10].

The absolute bioavailability was non-significantly lower for calculated unbound and salivary cortisone at 88 and 93%. This is not surprising, as due to non-linear and saturable protein binding, free cortisol levels will be higher immediately after IV administration compared to the oral route. This will potentially lead to higher total clearance and lower AUC_{0-inf} of the IV compared to the oral formulation especially at the early time points leading to an over-estimation of the bioavailability. This illustrates the potential problem of conducting bioavailability studies where there is non-linearity in the pharmacokinetics of a drug, these issues have been previously identified [11]. In the case of hydrocortisone either the unbound plasma cortisol or the salivary cortisone (as a surrogate for unbound plasma cortisol) concentrations will more likely give a more accurate assessment of absolute bioavailability compared to using total plasma cortisol concentrations. From our own observations, the differences in bioavailability for hydrocortisone do not seem to be significantly affected by the non-linear protein binding.

One limitation of the current study is that individual total serum cortisol concentration-time data were used to calculate the unbound cortisol profiles based on a literature derived model, errors introduced here may have contributed to the higher variability seen in the data. Ideally further research is needed where the actual unbound plasma cortisol is measured for each individual prior to data analysis and calculation of bioavailability. Interestingly least variability was observed in the salivary cortisone data suggesting that for this drug the data from this measure is reliable for calculating bioavailability. Another limitation is the 2×2 nature of this study design which may limit the detection of intra-individual variability and also detection of possible carry over effects [12].

Conclusion

In conclusion, this paper demonstrates the use of alternative approaches in the determination hydrocortisone bioavailability that overcome the issue of non-linear pharmacokinetics of the drug due to non-linear protein binding. Atypical pharmacokinetics may influence the results when determining bioavailability and should thus be considered at the study design stage. The results confirm that salivary

cortisone reflects unbound serum cortisol levels and demonstrate that salivary cortisone can be used clinically as a non-invasive method for measuring cortisol exposure after hydrocortisone administration. This is especially of value in monitoring children with adrenal insufficiency to check for appropriate hydrocortisone replacement [13].

Grants

MRCUK-G1100236, EUPFP7-201444, European Commission FP7 Grant (No. 281654 TAIN).

Disclosure Statement

RJR & MJW are Directors of Diurnal Ltd and hold stock.

Registered EudraCT number: 2013-000259-42

References

- Lewis JG, Bagley CJ, Elder PA, Bachmann AW, Torpy DJ (2005) Plasma free cortisol fraction reflects levels of functioning corticosteroid-binding globulin. Clinica Chimica Acta; International Journal of Clinical Chemistry 359: 189-194.
- Lentjes EG, Romijn FH (1999) Temperature-dependent cortisol distribution among the blood compartments in man. J Clin Endocrinol Metab 84: 682-687.
- Derendorf H, Mollmann H, Barth J, Mollmann C, Tunn S, et al. (1991) Pharmacokinetics and oral bioavailability of hydrocortisone. J Clin Pharmacol 31: 473-476.
- Hawley JM, Owen LJ, Lockhart SJ, Monaghan PJ, Armston A, et al. (2016) Serum Cortisol: An Up-To-Date Assessment of Routine Assay Performance. Clin Chem 62: 1220-1229.
- Roland BL, Funder JW (1996) Localization of 11beta-hydroxysteroid dehydrogenase type 2 in rat tissues: *In situ* studies. Endocrinology 137: 1123-1128.
- Debono M, Harrison RF, Whitaker MJ, Eckland D, Arlt W, et al. (2016) Salivary cortisone reflects cortisol exposure under physiological conditions and after hydrocortisone. J Clin Endocrinol Metab 101: 1469-1477.
- Katz FH, Shannon IL (1969) Parotid fluid cortisol and cortisone. J Clin Invest 48: 848-855.
- Owen LJ, Adaway JE, Davies S, Neale S, El-Farhan N, et al. (2013) Development of a rapid assay for the analysis of serum cortisol and its implementation into a routine service laboratory. Ann Clin Biochem 50: 345-352.
- Jones RL, Owen LJ, Adaway JE, Keevil BG (2012) Simultaneous analysis of cortisol and cortisone in saliva using XLC-MS/MS for fully automated online solid phase extraction. J Chromatogr B Analyt Technol Biomed Life Sci 881-882: 42-48.
- Patel RB, Rogge MC, Selen A, Goehl TJ, Shah VP, et al. (1984) Bioavailability of hydrocortisone from commercial 20-mg tablets. J Pharm Sci 73: 964-966.
- Browne TR, Szabo GK, Schumacher GE, Greenblatt DJ, Evans JE (1992) Bioavailability studies of drugs with nonlinear pharmacokinetics: I. Tracer dose AUC varies directly with serum concentration. J Clin Pharmacol 32: 1141-1145.
- Chow SCEL, Chi E, Yang LY, Tothfalusi L (2011) Statistical issues in bioavailability/bioequivalence Studies. J Bioequiv Availab S1-007.
- Porter J, Blair J, Ross RJ (2017) Is physiological glucocorticoid replacement important in children? Arch Dis Child 102: 199-205.