

# 10-Year Performance of Veneered CAD/CAM versus Conventional Single-Span and Multi-Span Fixed Partial Dentures

Silvia Brandt<sup>1\*</sup>, Jan-Tobias Süss<sup>2</sup>, Hans-Christoph Lauer<sup>1</sup> and Jan Brandt<sup>1</sup>

<sup>1</sup>Department of Prosthodontics, Goethe University Frankfurt, Germany

<sup>2</sup>Dentist Privat Practice, Büdingen Alter Weg 9, 63225 Langen, Germany

\*Corresponding author: Dr. Silvia Brandt, Associate Professor, Department of Prosthodontics, ZZMK Carolinum, Goethe University, Frankfurt, Theodor-Stern-Kai 7, Haus 29, 60596 Frankfurt am Main, Germany, Tel: +49 69 6301 83617; Fax: +49 69 6301 3711; E-mail: hajaj@med.uni-frankfurt.de

Received date: July 03, 2017; Accepted date: July 12, 2017; Published date: July 20, 2017

Copyright: © 2017 Brandt S, et al. This is an open-access article distributed under the terms of the Creative Commons Attribution License, which permits unrestricted use, distribution, and reproduction in any medium, provided the original author and source are credited.

## Abstract

**Aim:** The aim of the present study was to compare the survival rates of different materials for fixed partial dentures (FPDs).

**Materials and Methods:** A total of 547 FPDs made of different materials delivered to 319 patients were studied retrospectively with a mean observation time of 9.3 years. Cast-metal, metal-ceramic, and all-ceramic FPDs were included in the study and compared.

**Results:** The 10-year survival rate for cast-metal FPDs was 92.7%, for metal-ceramic FPDs, 76.2%, and for all-ceramic FPDs, 88.2%. No significant findings were reported regarding FPD materials and long-term survival rates.

**Conclusion:** Unlike in previous studies, no significant difference between the survival rates of all-ceramic FPDs and FPDs made of other materials was found. These results may be due to modern manufacturing methods of FPD frameworks — in particular CAD/CAM technology, which facilitates optimized framework designs.

**Keywords:** Long term survival rates fixed partial dentures; Cast-metal-ceramic fixed partial dentures; All-ceramic fixed partial dentures; Cast-metal fixed partial dentures; CAD/CAM framework

## Introduction

The adequate replacement of lost or congenitally missing teeth is an important part of every dentist's daily routine. Even though the number of missing teeth in German adults between 35 and 44 years of age is declining [1], many of the resulting edentulous spaces are rehabilitated using a bridge restoration (fixed partial denture, FPD). The teeth most frequently replaced by FPDs are the maxillary premolars and the maxillary and mandibular first molars. Most of these FPDs are delivered when the patients are between 31 and 50 years old [2].

Notwithstanding the growing popularity of oral implantology, not every patient can receive an implant-supported rehabilitation. The comparative advantages and disadvantages of implant-supported restorations and conventional bridges must be individually evaluated for each patient and the patient treated accordingly [3]. For this reason, the restoration of edentulous spaces gap supply by means of conventional tooth-supported bridges will continue to play an important role in dental therapy in the future. Therapeutic alternatives in the form of removable dentures, orthodontic space closure, or no treatment will not be discussed at this point.

Numerous studies on FPDs have shown that properly delivered restorations of this type can achieve high levels of patient satisfaction and very good long-term results [4-10].

To obtain these desirable long-term outcomes, it is essential to evaluate the abutment teeth before prescribing an FPD. Factors such as the number, shape and distribution of roots, the height and width of the crown, the length ratio between root and crown, but also any tooth mobility or possible bone loss play an important role [11]. A conscientious assessment of the abutment teeth and the consultation of scientific studies on the survival of various restorative options [12] provide invaluable and indispensable input for the subsequent treatment-planning stage.

Sailer and coworkers examined 1,163 metal-ceramic (MC) FPDs and 343 all-ceramic (AC) FPDs. The 5-year success rates of 94.4% (MC) and 88.6% (AC) were significantly different, which according to Sailer and coworkers is due to the increased susceptibility to framework and veneer fracture in all-ceramic FPDs. The use of zirconia was to have reduced these technical shortcomings significantly [4]. Comparable results were obtained by Beuer and coworkers, who found a survival rate of 90.5% for 21 all-ceramic FPDs after 40 months [5]. Pjetursson and Lang examined possible differences in survival rates of different types of FPD in a systematic review. For conventional FPD, they found survival rates of 93.8% and 89.2% after 5 and 10 years, respectively. These survival rates were higher than those for cantilever bridges (91.4% and 80.3% after 5 and 10 years) and adhesive bridges (87.7% 65% after 5 and 10 years) [6]. Re-reading the study by Kantorowicz (1968), it is interesting to see that the survival rates cited for 149 FPDs, at 85% after 10 years, are of the same magnitude as the results of today's studies [13].

Then as now, there are several possible complications that can lead to a failure of a bridge restoration. These include secondary caries,

endodontic complications, periodontal reactions, damage to the ceramic veneer (chipping), and decementation of the restoration.

The literature shows that the survival rates are significantly lower for AC than for MC [4]. These findings were to be followed up retrospectively as a facet within the development of a therapeutic concept for bridge restorations conducted at the Center for Oral and Maxillofacial Surgery (ZZMK Carolinum) at the University of Frankfurt am Main over a period of 10 years. In addition, the long-term success rates determined for different FPD materials were to be evaluated in the context of the current literature on the subject.

## Method and Materials

The data evaluated in this study originate in the medical records of the Center for Oral and Maxillofacial Surgery (ZZMK Carolinum) at the University of Frankfurt am Main, Germany. Analyzing the electronic accounting records of individual billable services rendered, patients were identified who had received a tooth-supported FPD since 2002. The specific inclusion criteria were:

- Fabrication and delivery of the restoration at the ZZMK
- Natural teeth as abutments only
- Definitive FPD rehabilitation
- For AC: zirconia frameworks with ceramic veneering only
- Clearly documented location of the restoration

Taking into account the above criteria, a total of 547 FPD in 319 patients, treated by dentists and students of the dental school, were examined. During the subsequent evaluation of the patient records, the following parameters were studied:

- Age and gender
- Frequency of recalls
- Medical practitioner (dentist or student)
- Location of the FPD
- Single-span or multi-span FPD
- Cantilever or terminal FPD
- Abutment vitality
- Opposing dentition
- Type of FPD
- Type of complication
- Differentiation between reparable and irreparable damage
- Treatment of complications
- Necessary extractions

In the event that complications were recorded in the medical history, they were further subdivided into:

## Biological complications

- Secondary caries
- Apical osteitis
- Horizontal and vertical bone loss (periodontitis)
- Root fractures
- Enamel fractures

## Technical complications

- Damage to the ceramic veneer (chipping)
- Decementation
- Framework fractures
- Esthetic deficiencies

All investigated FPD's were fabricated in the same dental laboratory according to the manufacturer instructions with an anatomical shape. The frameworks of the AC's were fabricated by using the CAD-CAM method and were milled out of zirconia (Lava 3M Espe, Seefeld; Cercon DeguDent, Hanau).

The casts of the MC's were manufactured out of metal-alloy (DeguDent Herador, Hanau). Both, the AC and MC frameworks were designed and produced with an anatomical shape to ensure a ceramical veneering (Cercon Kiss, Degudent Hanau) with a thickness of 1 mm to 1.5 mm. For cementation of the FPD's zinc oxide phosphate cement or glass ionomer cement (Ketac Cem 3M Espe, Seefeld) was used.

To extract the corresponding survival rates from the data, a statistical analysis using the Kaplan-Meier method was performed. Here, the survival rate is represented as a function of time at risk. Significant differences in survival rates between individual groups were analyzed using the Wilcoxon test. The log rank test was used to determine the impact of specific parameters on success rates. A confidence interval of 95% was adopted for all statistical calculations, which means a statistical significance for  $p \leq 0.05$ . The analysis was performed with BiAS 9.14 software packages (IBM).

## Result

A total of 547 FPDs-34 cast-metal (CM), 425 MC, 88 AC — with a median observation time of 9.3 years were examined retrospectively. Of these, 316 restorations were supported by vital abutment teeth only, 169 by combination of vital and non-vital abutment teeth, and 33 by non-vital abutment teeth only.

Table 1 shows the designs, success rates, and associated complications individual FPDs in detail.

FPD designs	Cast metal (CM)	%	Metal-ceramic (MC)	%	All-ceramic (AC)	%	Total	%
FPDs	34	100.00%	425	100.00%	88	100.00%	547	100.00%
Terminal FPDs	34	100.00%	368	86.50%	76	86.40%	478	87.39%
Cantilever FPDs	0	0.00%	57	13.40%	12	13.60%	69	12.61%
Single-span FPDs	34	100.00%	395	92.90%	7	8.00%	436	79.71%
Multi-span FPDs	0	0.00%	30	7.10%	81	92.00%	111	20.29%

Abutment teeth	68	100.00%	950	100.00%	186	100.00%	1204	100.00%
Vital	62	91.10%	747	78.60%	142	76.30%	951	78.99%
Non-vital	6	8.80%	203	21.40%	44	23.70%	253	21.01%
Of which with post-and-cores	2	33.00%	78	38.40%	24	54.50%	104	41.11%
<b>Success rates</b>								
5 years without complications		93.50%		82.70%		78.20%		0.00%
10 years without complications		84.20%		66.70%		73.10%		60.26%
5-year survival rate		96.70%		90.80%		95.30%		80.34%
10-year survival rate		92.70%		76.20%		88.20%		69.28%
Mean survival time (years)	20.2		18.2		12.2		10.6	
<b>Complications</b>								
Insufficient restoration margins	8	23.50%	58	13.60%	3	3.40%	69	12.61%
Apical osteitis	2	5.80%	22	5.20%	1	1.10%	25	4.57%
Root fractures	2	5.80%	2	0.50%	1	1.10%	5	0.91%
Framework fractures	1	2.90%	6	1.40%	4	4.50%	11	2.01%
Chipping	0	0.00%	22	5.20%	2	2.30%	24	4.39%
Decementation/loss of retention	1	2.90%	8	1.90%	14	15.90%	23	4.20%
Perio-endo lesion	0	0.00%	1	0.20%	0	0.00%	1	0.18%
Enamel fracture of the clinical crown	0	0.00%	2	0.50%	1	1.10%	3	0.55%
Esthetic failure	0	0.00%	2	0.50%	0	0.00%	2	0.37%
Extraction of abutment teeth	2	3.00%	39	4.10%	7	0.50%	48	3.99%
Total failure on average (years)	13.2		7.3		3		2.8	

**Table 1:** Individual FPD types: designs, success rates, and associated complications.

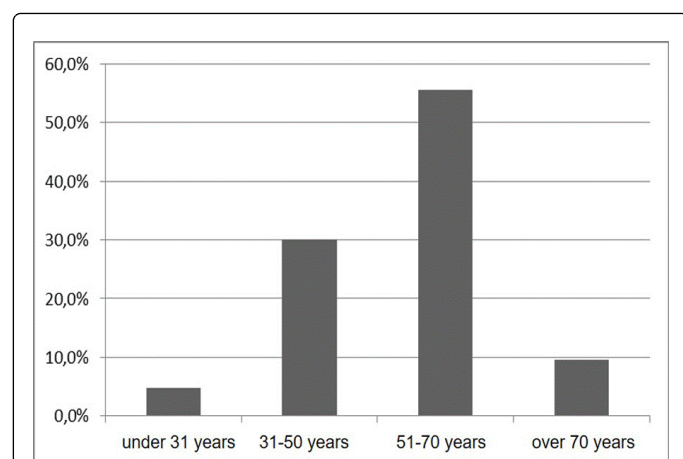
The investigated cohort was 56% female and 44% male and had no statistical influence on the failure-rate. The age distribution is shown in Figure 1. A statistical significance for a higher risk of FPD failure was found in the group of 70 years and older ( $p=0.001$ ). Further no influence of the jaw location or the medical practitioner could be found. The FPD's were located all over in the upper or lower jaw, molar-, premolar- or frontal region.

A closer look only showed a statistical significant higher risk for failure for AC FPD's in the upper jaw if frontal, premolar and molar teeth were included ( $p=0.01$ ). In the subsequent analysis of the impact of individual parameters on the success rate of an FPD, no statistically significant correlation could be demonstrated between FPD materials and success rates ( $p=0.55$ ), despite the differences in survival rates (Table 1) could be detected.

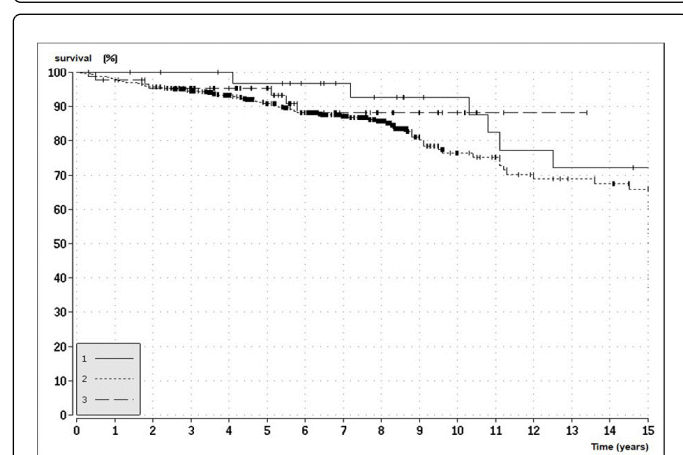
Figure 2 shows the Kaplan-Meier survival plot. Regarding the differentiation of single-span vs. multi-span FPD, a significantly higher risk of failure was found for multi-span AC ( $p=0.02$ ) are detected. Although the failure rate of all multi-span MC was 13.3%, no statistical significance could be deduced ( $p=0.53$ ). However, cantilever AC exhibited a significantly higher risk of failure than terminal AC

( $p=0.02$ ). Looking at the impact abutment tooth vitality on the success rate, a significant difference was found as soon as two or more abutment teeth were non-vital ( $p=0.01$ ). In 40% of cases, an abutment tooth was lost completely during the observation period. If one or more of these abutment teeth had additionally been restored with a post-and-core, the risk of failure increased further ( $p=0.009$ ).

Another striking finding of this study was related to AC with CM as antagonists ( $n=2$ ), where fracture of the ceramic framework of the FPDs occurred after 116 and 169 days, respectively ( $p=0$ ). A final special aspect was revealed when looking at the correlation between regular follow-up visits and the failure rate of restorations. If recall appointments were missed, the risk of complications was significantly greater ( $p=0.004$ ).



**Figure 1:** Age distribution.



**Figure 2:** Kaplan-Meier-Plot. Survival rate of CM (1), MC (2), AC (3).

## Discussion

Comparable studies examining the survival rates of FPD designs often did not differentiate between different FPD materials. However, considering the results obtained here, this should not impair comparison with those studies, because the present study - unlike in the study by Sailer and coworkers [4] - was unable to demonstrate a significance correlation between success rates and FPD materials.

Burke and Lucarotti reported a success rate of 72% after an observation period of 10 years [7]; Izikowitz, 83% [14], Kerschbaum and coworkers, 82% [10]; Creugers and coworkers, 90% [8]; and Pjeturson and Lang, 89.2% [6]. Comparing the above values with the results of the present study (76-93%), all the survival rates are within a similar range. The 10-year survival rate of 92.9% reported by Lulic and coworkers is also still within this range. In addition, Lulic and coworkers underscored the importance of regular recalls [9]. The positive influence of consistent recalls on the longevity of a prosthetic restoration as demonstrated by this study was confirmed by Kanno and coworkers [15].

The increased risk of failure where FPDs were supported by two or more non-vital abutment teeth had already been discussed by Leempoel and coworkers. They, too, cited considerably less favorable prognoses for restorations on non-vital abutment teeth [16]. De Backer and coworkers [19] showed a still significantly higher risk of non-vital teeth restored with post-and-cores. The reasons for the less favorable outcomes of endodontically treated teeth lie not so much in the prosthetic treatment as in the complications and sequelae of the endodontic treatment itself. According to Elemam and Pretty, the success rate of primary endodontic treatment is about 86% [17]. Looking at the additional effect of placing an endodontic post, possible complications such as a fracture or debonding of the pin [18] must be taken into account, which can adversely affect the success rate.

Missing reference values prevented a statistical evaluation of the design principles of terminal and cantilever FPD for CM and MC, making this comparison possible for AC only. The observed increased failure rate of cantilever vs terminal FPD corroborates the results of other studies [19,20]; it can be mainly explained by the effects of unfavorable leverage on the abutment teeth.

The literature provides no data on potentially increased failure rates of multi-span bridges, which prevents any comparison with previous studies. One possible explanation might be found in the manufacturing process (for example the definition of a common path of insertion) and the increased per cent likelihood of complications due to the greater number of abutment teeth.

But this latter point, too, must be viewed critically given the absence of comparative figures. While the observations related to framework fractures in AC with CM in the opposing jaw are significant from a purely statistical point of view, the question remains whether this would not also have been the case in the presence of other types of restorations in the opposing jaw. Other possible reasons may be associated with parafunction, which is another reason why this last point cannot be definitively resolved.

In summary it can be concluded that, compared to the results of Sailer and coworkers [4], the survival rates for AC were higher than those for MC. Thanks to modern materials and manufacturing processes, such as the CAD/CAM technology, using high-performance ceramics and ensuring compliance with the manufacturer's instructions, no significant drawbacks were found in terms of long-term survival. The hypothesis of Sailer and coworkers as initially mentioned - namely that the failure rate of AC could be significantly reduced by using zirconia frameworks [4] - was therefore corroborated. With consistent application of this insight, it should be possible to make AC significantly less prone to complications in daily clinical practice.

## Acknowledgments

The authors report no conflicts of interest related to this study.

## References

1. Schutzhold S, Holtfreter B, Hoffmann T, Kocher T, Micheelis W (2013) Trends in dental health of 35- to 44-year-olds in West and East Germany after reunification. *J Public Health Dent* 73: 65-73.
2. Leempoel PJ, Rossum GMV, Haan AFD, Reintjes AG (1989) Bridges in general dental practices: a descriptive study of the types of bridges and patients. *J Oral Rehabil* 16: 381-386.
3. Hebel K, Gajjar R, Hofstede T (2000) Single-tooth replacement: bridge vs. implant-supported restoration. *J Can Dent Assoc* 66: 435-438.

4. Sailer I, Pjetursson BE, Zwahlen M, Hammerle CH (2007) A systematic review of the survival and complication rates of all-ceramic and metal-ceramic reconstructions after an observation period of at least 3 years. Part II: Fixed dental prostheses. *Clin Oral Implants Res* 18: 86-96.
5. Beuer F, Edelhoff D, Gernet W, Sorensen JA (2009) Three-year clinical prospective evaluation of zirconia-based posterior fixed dental prostheses (FDPs). *Clin Oral Investig* 13: 445-451.
6. Pjetursson BE, Lang NP (2008) Prosthetic treatment planning on the basis of scientific evidence. *J Oral Rehabil* 35: 72-79.
7. Burke FJ, Lucarotti PS (2012) Ten year survival of bridges placed in the General Dental Services in England and Wales. *J Dent* 40: 886-895.
8. Creugers NH, Kayser AF, van't Hof MA (1994) A meta-analysis of durability data on conventional fixed bridges. *Community Dent Oral Epidemiol* 22: 448-452.
9. Lulic M, Bragger U, Lang NP, Zwahlen M, Salvi GE (2007) Ante's (1926) law revisited: a systematic review on survival rates and complications of fixed dental prostheses (FDPs) on severely reduced periodontal tissue support. *Clin Oral Implants Res* 18: 63-72.
10. Kerschbaum T, Haastert B, Marinello CP (1996) Risk of debonding in three-unit resin-bonded fixed partial dentures. *J Prosthet Dent* 75: 248-253.
11. Ikai H, Kanno T, Kimura K (2006) A review of clinical follow-up studies focusing on pretreatment conditions of abutment and clinical examination parameters. *Nihon Hotetsu Shika Gakkai Zasshi* 50: 245-255.
12. Scheuber S, Hicklin S, Bragger U (2012) Implants versus short-span fixed bridges: survival, complications, patients' benefits. A systematic review on economic aspects. *Clin Oral Implants Res* 23: 50-62.
13. Kantorowicz GF (1968) Bridges: an analysis of failures. *Dent Pract Dent Rec* 18: 176-178.
14. Izikowitz L (1976) A long-term prognosis for the fixed saddle-bridge. A study of 100 constructions. *J Oral Rehabil* 3: 25-40.
15. Kanno T, Nakamura K, Hayashi E, Kimura K, Hirooka H, et al. (2008) What prosthodontic therapy should we select for periodontally compromised patients? Part 2: Review of the literature focusing on conventional prosthodontic therapy for periodontally compromised patients and clinical implication (RPD vs FPD vs implant). *Nihon Hotetsu Shika Gakkai Zasshi* 52: 143-149.
16. Leempoel PJ, Kayser AF, Van Rossum GM, De Haan AF (1995) The survival rate of bridges. A study of 1674 bridges in 40 Dutch general practices. *J Oral Rehabil* 22: 327-330.
17. Elemam RF, Pretty I (2011) Comparison of the success rate of endodontic treatment and implant treatment. *ISRN Dent* 2011: 640509.
18. Soares CJ, Valdivia AD, da Silva GR, Santana FR, Menezes Mde S (2012) Longitudinal clinical evaluation of post systems: a literature review. *Braz Dent J* 23: 135-740.
19. De Backer H, Van Maele G, Decock V, Van den Berghe L (2007) Long-term survival of complete crowns, fixed dental prostheses, and cantilever fixed dental prostheses with posts and cores on root canal-treated teeth. *Int J Prosthodont* 20: 229-234.
20. Walls AW (2010) Cantilever FPDs have lower success rates than end abutted FPDs after 10-years of follow-up. *J Evid Based Dent Pract* 10: 41-43.