

## **An audit of quality assurance of OPG radiographs at Chelsea and Westminster Hospital NHS trust**

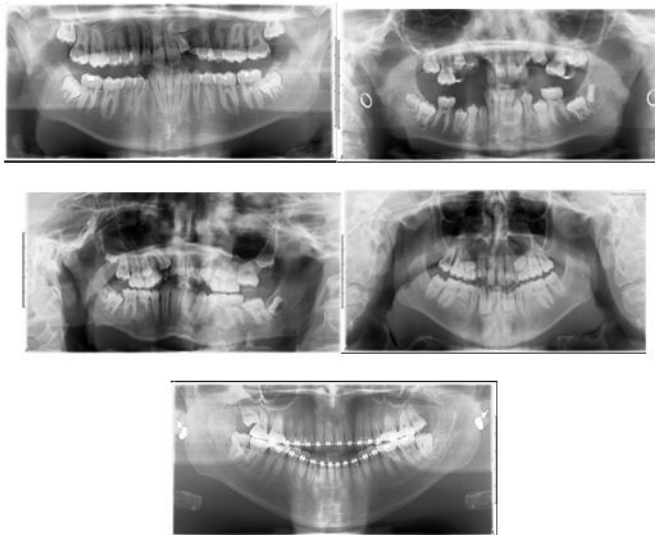
**Anum Khan\*** and **Ghaida Al-Jaddir**

Chelsea and Westminster Hospital NHS Trust, UK

**Background:** Panoramic Radiographs should ensure accurate positioning using light beam markers and generate diagnostically acceptable radiographs.

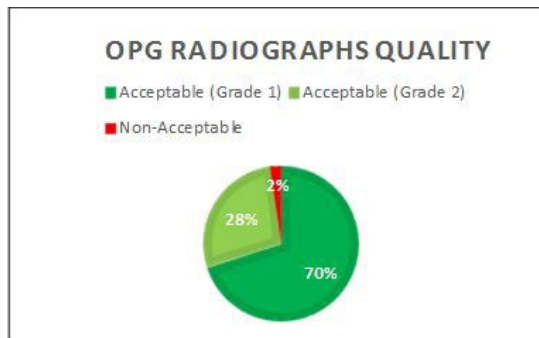
**Aims:** To establish the quality of image of OPG's and grading as Acceptable (A) or Not-Acceptable (NA). To evaluate clinicians record keeping including justification, grading and radiographical findings reports.

**Methodology:** Retrospective Audit – 100 patients (Paediatric and adult) who have prescribed OPG undertaken at CW Radiology unit. Errors rendering grade two identified:



**Audit Standards:** FGDP, RCS, NRPB, GDC - For digital Radiographic Images: > 95% Diagnostically Acceptable (A), < 5% Not-acceptable (NA)

**Results:** OPG quality - 98% Acceptable, 2% Non-acceptable.



Most prevalent errors in OPGs were patient movement (31% blurred), cranium/ orbital excess exposure (12%), TMJ not visible (17%).



OPG record keeping: 100% justification recorded. 100% record keeping for OPG justification, grading and radiographical findings from all clinicians.

- Improvement to 100% in 2024 for OPG record keeping
- From 79% clinical records in 2023 (21% no records).

### Biography

Anum Khan, specialty Paediatric Dentist at Chelsea and Westminster Hospital NHS Trust.

**Received:** October 22, 2024; **Accepted:** October 24, 2024; **Published:** December 14, 2024